



# M2M Flash Tool

## H24 HSPA Series

### Technical Information

#### Motorola H24 M2M Flash Tool and Command Line Protocol

September 16<sup>th</sup>, 2009  
Version 1.0



**MODULES**   
Zero time, Zero effort



## TABLE OF CONTENTS

<b>Document Purpose .....</b>	<b>3</b>
<b>M2M Flash Tool .....</b>	<b>3</b>
<b>Overview .....</b>	<b>3</b>
<b>System requirements .....</b>	<b>3</b>
<b>Installation .....</b>	<b>3</b>
<b>H24 USB Drivers .....</b>	<b>10</b>
<b>Flash Tool GUI Usage .....</b>	<b>10</b>
<b>Flash Tool Command Line .....</b>	<b>12</b>
<b>Support .....</b>	<b>13</b>



## **Document Purpose**

This document will guide you on how to use the:

- H24 M2M Flash Tool
- H24 Flash command line protocol

## **M2M Flash Tool**

### **Overview**

The M2M Flash Tool is used to flash SW into the HSPA module – H24. The Flash Tool runs on a Microsoft Windows machine and connects to the H24 module using USB only.

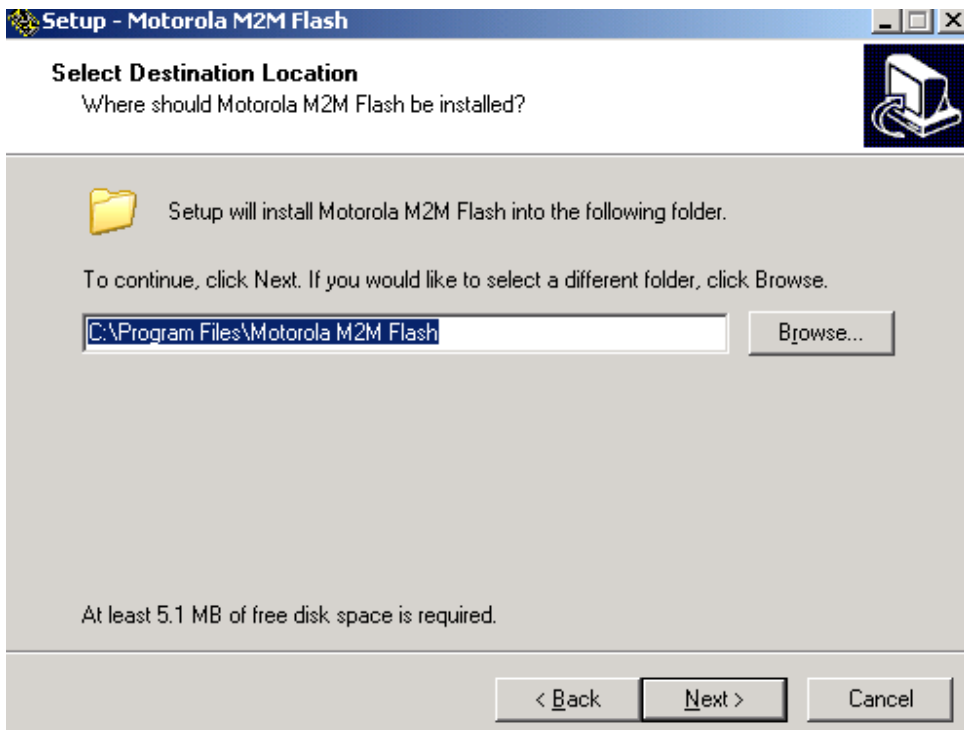
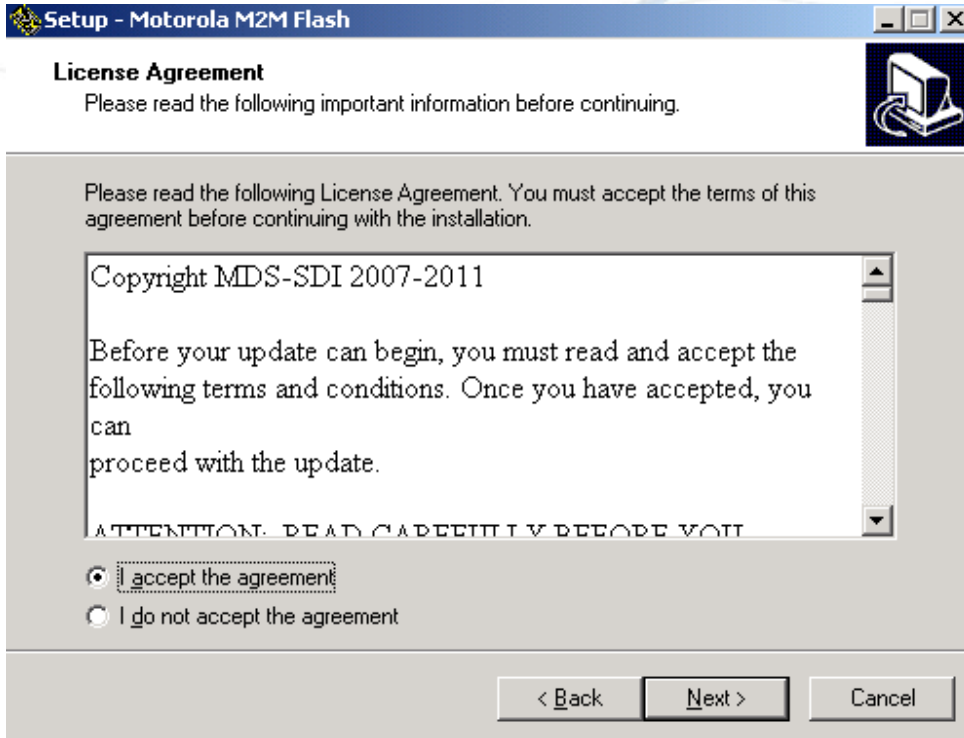
### **System requirements**

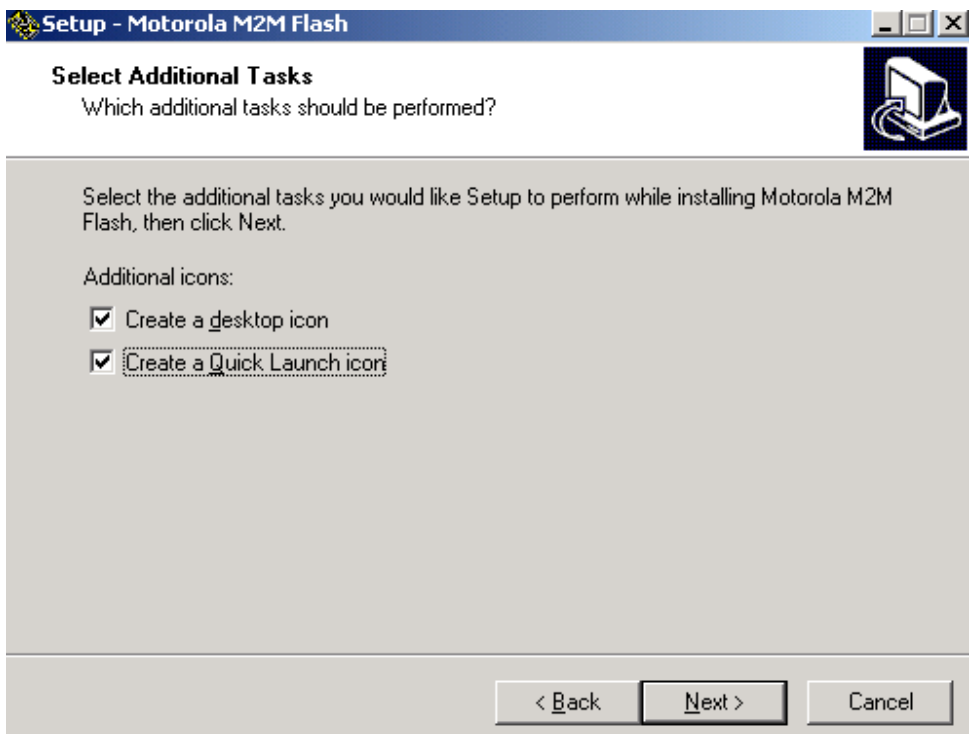
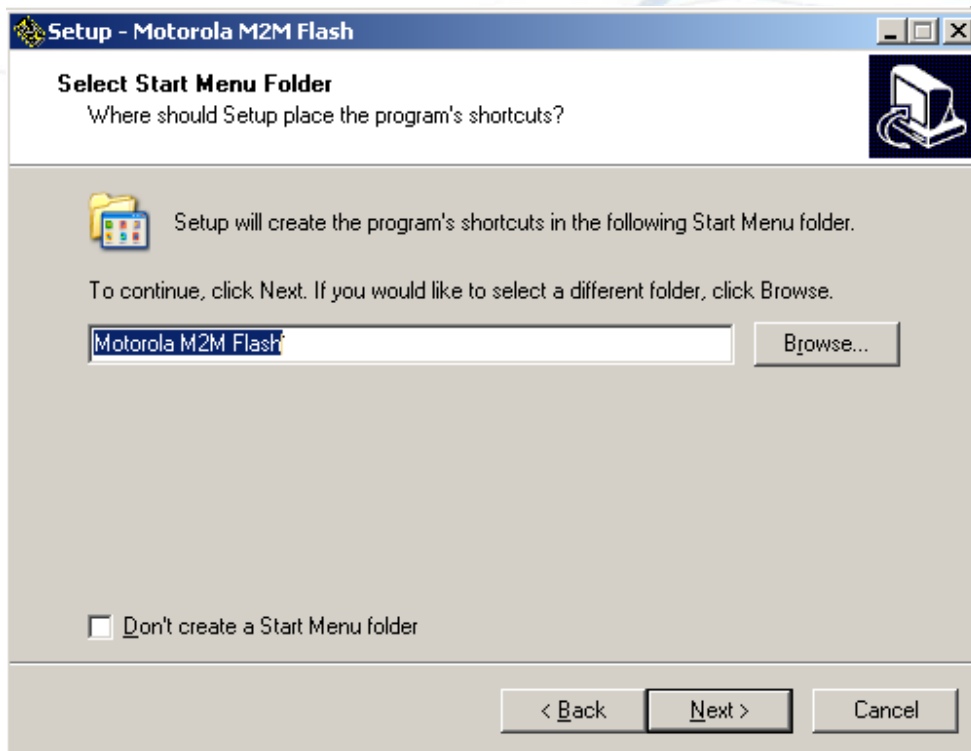
- USB connection to H24 module.

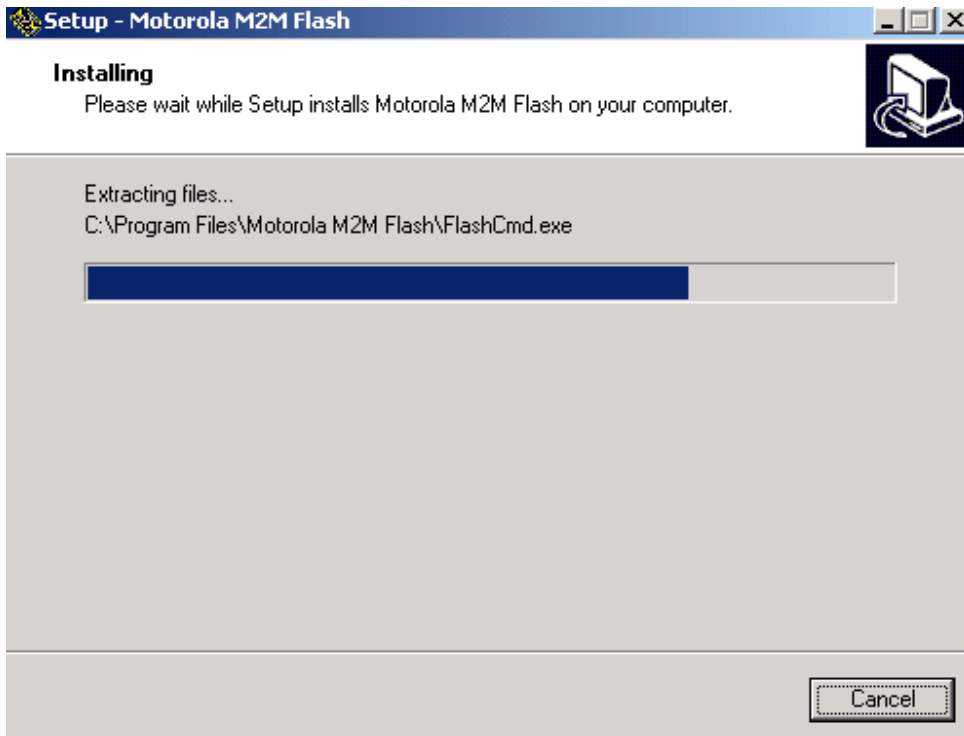
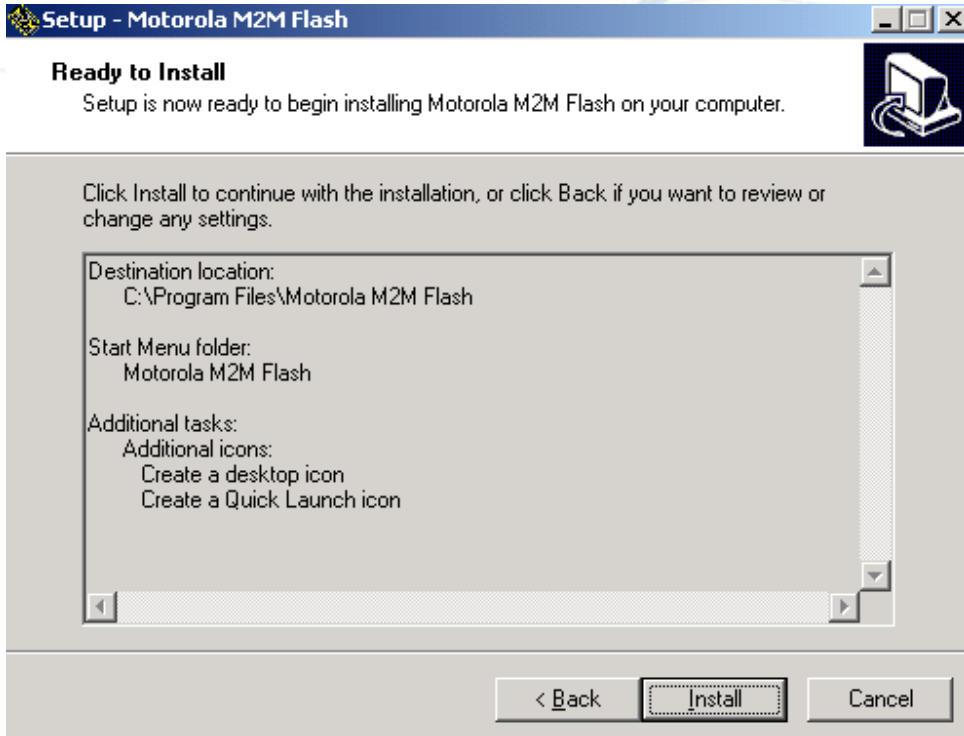
### **Installation**

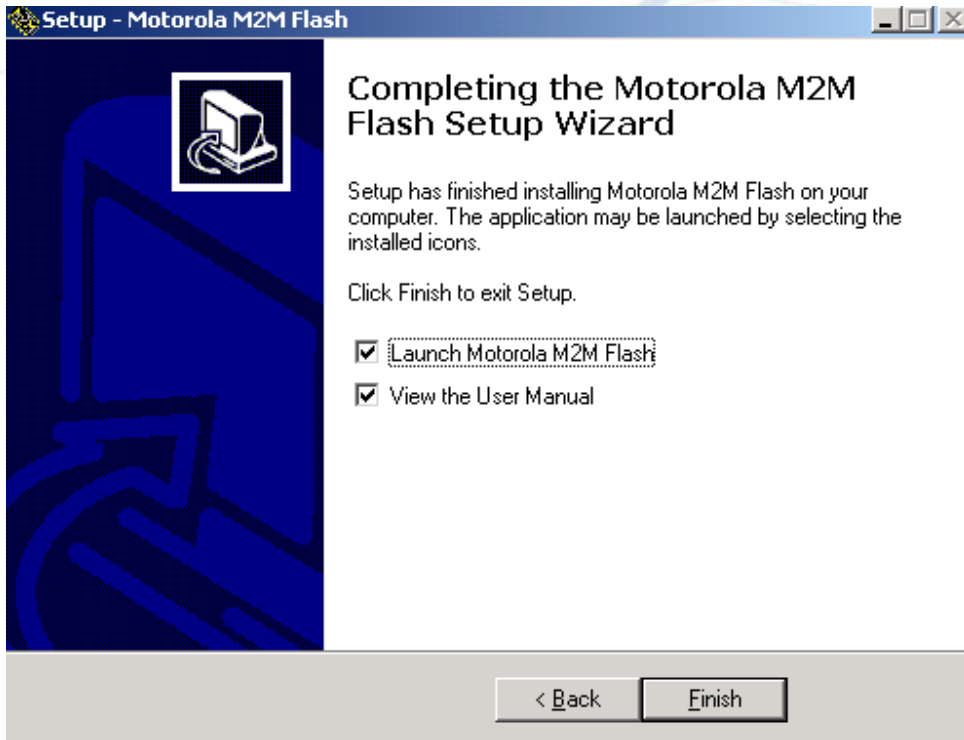
Launch “M2MFlashToolSetup.exe” and follow instructions.



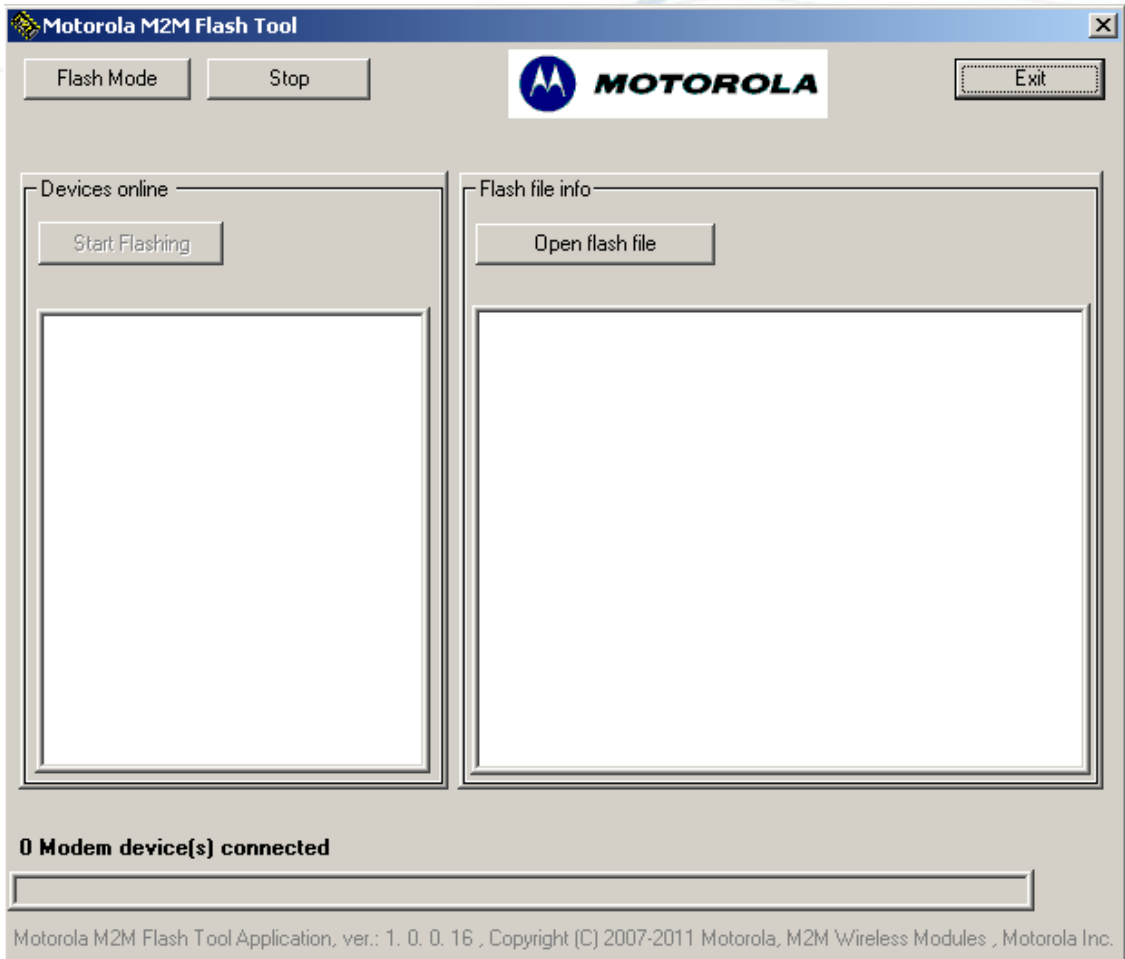














## **H24 USB Drivers**

H24 USB driver version 3.9.1 and later must be installed before using the H24 Flash tool.

## **Flash Tool GUI Usage**

In order to flash new SW into H24 module with GUI application, follow the following procedure:

1. Connect the H24 module to the PC using USB connection (the module should enumerate as “Motorola USB Modem” in Windows’s device manager).
2. Launch M2M Flash Tool.
3. Press Start tool button.
4. After few seconds H24 module information should be displayed in Devices online windows.
5. Press Open flash file button and choose Super file you would like to flash into H24 module.
6. Super file information should be displayed in Flash file info window.
7. Press Start Flashing to start flashing the super file into H24 module.
8. When Flashing is completed, the module will be restarted and will enumerate as “Motorola USB Modem” in Windows’s device manager.

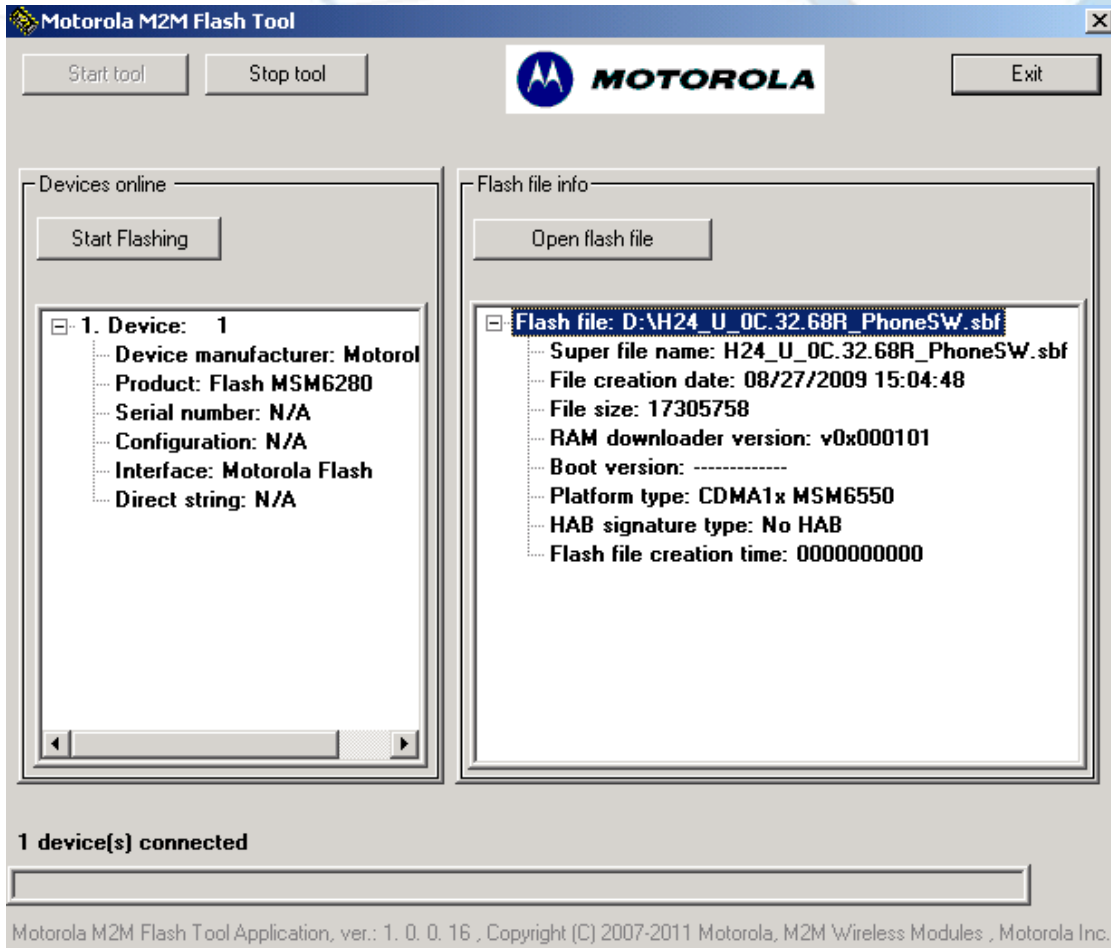


Figure 1: Flash Tool GUI



## Flash Tool Command Line

In order to flash new SW into H24 module with command line protocol, follow the following procedure:

1. Connect the H24 module to the host device (PC) using USB connection (the module should enumerate as “Motorola USB Modem” in Windows’s device manager).
2. Run the following command to flash super file into H24:  
FlashCmd.exe SBFPATH [option]  
SBFPATH - Flash super file full path.  
[options]:  
-numeric - output the result in numeric format. The default output is txt format.
3. When Flashing is completed, the module will be restarted and will enumerate as “Motorola USB Modem” in Windows’s device manager.
4. Following are the H24 FLASH command line Output:

```
0:      "Flashing completed"  
1:      "Invalid parameters"  
2:      "File is not exist"  
3:      "MFC Initialization failed"  
4:      "Engine Initialization failed"  
5:      "Wrong Super file"  
6:      "No available device(s)"  
7:      "Flashing Error"  
8:      "Uninitialization failed"  
9:      "Restore Phasing Error"  
100:   "General Error"
```

Output details will be logged to \_FT\_log.txt file in the installation folder - C:\Program Files\Motorola M2M Flash tool\.



```
C:\WINDOWS\system32\cmd.exe
C:\Program Files\Motorola M2M Flash Tool>dir
Volume in drive C is SYSTEM
Volume Serial Number is 9026-7F7A

Directory of C:\Program Files\Motorola M2M Flash Tool

07/27/2009  10:48 AM    <DIR>          .
07/27/2009  10:48 AM    <DIR>          ..
07/26/2009  01:24 PM             342      _FT_log.txt
07/22/2009  04:48 PM      2,195,456  FlashCmd.exe
06/01/2009  05:17 PM    17,231,926  H24_U_0C.32.38R_PhoneSW.sbf
06/17/2009  01:55 PM    2,228,224  M2MFlashTool.exe
04/02/2009  03:40 PM       9,503     pst_flash.ini
07/26/2009  01:23 PM       1,616     unins000.dat
07/26/2009  01:23 PM     695,578     unins000.exe
07/22/2009  04:55 PM       6,216     unins001.dat
07/22/2009  04:55 PM     695,578     unins001.exe
          9 File(s)      23,064,439 bytes
          2 Dir(s)   2,930,399,744 bytes free

C:\Program Files\Motorola M2M Flash Tool>FlashCmd.exe H24_U_0C.32.38R_PhoneSW.sbf
Flashing completed

C:\Program Files\Motorola M2M Flash Tool>
```

Figure 2: Flash Tool Command Line

### Support

For any issues with this tool, you can get support at:

<https://developer.motorola.com/techresources/techsupport/>