



## APPLICABILITY TABLE

PRODUCT
SL869-3DR EVK

Preliminary



***SPECIFICATIONS SUBJECT TO CHANGE WITHOUT NOTICE***

**Notice**

While reasonable efforts have been made to assure the accuracy of this document, Telit assumes no liability resulting from any inaccuracies or omissions in this document, or from use of the information obtained herein. The information in this document has been carefully checked and is believed to be entirely reliable. However, no responsibility is assumed for inaccuracies or omissions. Telit reserves the right to make changes to any products described herein and reserves the right to revise this document and to make changes from time to time in content hereof with no obligation to notify any person of revisions or changes. Telit does not assume any liability arising out of the application or use of any product, software, or circuit described herein; neither does it convey license under its patent rights or the rights of others.

It is possible that this publication may contain references to, or information about Telit products (machines and programs), programming, or services that are not announced in your country. Such references or information must not be construed to mean that Telit intends to announce such Telit products, programming, or services in your country.

**Copyrights**

This instruction manual and the Telit products described in this instruction manual may be, include or describe copyrighted Telit material, such as computer programs stored in semiconductor memories or other media. Laws in the Italy and other countries preserve for Telit and its licensors certain exclusive rights for copyrighted material, including the exclusive right to copy, reproduce in any form, distribute and make derivative works of the copyrighted material. Accordingly, any copyrighted material of Telit and its licensors contained herein or in the Telit products described in this instruction manual may not be copied, reproduced, distributed, merged or modified in any manner without the express written permission of Telit. Furthermore, the purchase of Telit products shall not be deemed to grant either directly or by implication, estoppel, or otherwise, any license under the copyrights, patents or patent applications of Telit, as arises by operation of law in the sale of a product.

**Computer Software Copyrights**

The Telit and 3rd Party supplied Software (SW) products described in this instruction manual may include copyrighted Telit and other 3rd Party supplied computer programs stored in semiconductor memories or other media. Laws in the Italy and other countries preserve for Telit and other 3rd Party supplied SW certain exclusive rights for copyrighted computer programs, including the exclusive right to copy or reproduce in any form the copyrighted computer program. Accordingly, any copyrighted Telit or other 3rd Party supplied SW computer programs contained in the Telit products described in this instruction manual may not be copied (reverse engineered) or reproduced in any manner without the express written permission of Telit or the 3rd Party SW supplier. Furthermore, the purchase of Telit products shall not be deemed to grant either directly or by implication, estoppel, or otherwise, any license under the copyrights, patents or patent applications





## Contents

<b>1. Introduction.....</b>	<b>8</b>
1.1. Scope.....	8
1.2. Contact Information, Support .....	8
1.3. Text Conventions .....	9
1.4. Related Documents.....	9
1.5. Product Usage Notes.....	9
<b>2. Dead Reckoning Overview.....</b>	<b>10</b>
2.1. Classic Dead Reckoning (DR) Description.....	11
2.2. MEMS-only Dead Reckoning (MoDR) Description.....	12
<b>3. Evaluation Kit Requirements.....</b>	<b>13</b>
<b>4. Evaluation Kit Description .....</b>	<b>14</b>
4.1. SL869-3DR EVK Contents.....	14
4.2. SL869-3DR EVK Main Board Components.....	15
4.3. SL869-3DR EVK Main Board Component Identification .....	16
4.4. SL869-3DR EVK Board Schematic Diagrams.....	17
4.5. SL869-3DR EVK Unit connections.....	19
<b>5. SL869-3DR EVK Setup Requirements.....</b>	<b>20</b>
5.1. Installation and Calibration.....	20
5.2. Computer Setup and Connection.....	21
<b>6. Using TelitView .....</b>	<b>22</b>
6.1. Main Interface .....	22
6.2. Connecting to the EVK UART .....	22
➤ Main Menu Bar .....	22
➤ Main Tool Bar .....	22
➤ Connect to Receiver Window .....	23
6.3. TelitView Tabular View.....	24





## Figures

Figure 2-1 DR Operation in the absence of GNSS signals.....	10
Figure 2-2 Classic DR Operation .....	11
Figure 4-1 SL869-3DR EVK Contents.....	14
Figure 4-2 SL869-3DR EVK Main Board Components.....	15
Figure 4-3 SL869-3DR EVK Board Schematic Diagram – Page 1 / 2.....	17
Figure 4-4 SL869-3DR EVK Board Schematic Diagram – Page 2 / 2.....	18
Figure 4-5 EVK Unit connections – rear panel .....	19
Figure 5-1 Hardware Installation Warning Screen.....	21
Figure 6-1 TelitView Application Icon .....	22
Figure 6-2 TelitView Main Tool Bar .....	22
Figure 6-3 'Connect to Receiver" Window.....	23
Figure 6-4 Select "SL869-3DR".....	23
Figure 6-5 TelitView Front Panel Status Tab.....	24
Figure 6-6 TelitView Scatter Plot Tab.....	25
Figure 6-7 TelitView NMEA Monitor Tab.....	26
Figure 6-8 User Menu Command Manager.....	27
Figure 6-9 DR Control Panel View .....	28
Figure 6-10 Start Log Button .....	32
Figure 6-11 Stop Log Button .....	32
Figure 7-1 TESEOIII X-Loader .....	33

## Tables

Table 4-1 SL869-3DR EVK Main Board Component Identification .....	16
---	----



# 1. Introduction

## 1.1. Scope

The scope of this document is to give an overview of the following:

- Operation of the SL869-3DR and its MEMS sensor related features
- Connections to a test vehicle

## 1.2. Contact Information, Support

For general contact, technical support, to report documentation errors and to order manuals, contact Telit Technical Support Center (TTSC) at:

[TS-EMEA@telit.com](mailto:TS-EMEA@telit.com)  
[TS-AMERICAS@telit.com](mailto:TS-AMERICAS@telit.com)  
[TS-APAC@telit.com](mailto:TS-APAC@telit.com)

Alternatively, use:

<http://www.telit.com/en/products/technical-support-center/contact.php>

For detailed information about where you can buy the Telit modules or for recommendations on accessories and components visit:

<http://www.telit.com>

To register for product news and announcements or for product questions contact Telit Technical Support Center (TTSC).

Our aim is to make this guide as helpful as possible. Keep us informed of your comments and suggestions for improvements.

Telit appreciates feedback from the users of our information.





## 1.3. Text Conventions



**Danger – This information MUST be followed or catastrophic equipment failure or bodily injury may occur.**



**Caution or Warning – Alerts the user to important points about integrating the module, if these points are not followed, the module and end user equipment may fail or malfunction.**



**Tip or Information – Provides advice and suggestions that may be useful when integrating the module.**

All dates are in ISO 8601 format, i.e. YYYY-MM-DD.

## 1.4. Related Documents

- SL869-3DR Product User Guide
- SL869-3DR Software User Guide

## 1.5. Product Usage Notes



- To prevent ESD and EOS damage, a properly grounded ESD wrist strap should be worn when the EVK case is opened
- Do not alter jumpers while power is applied
- Do not short the RF signal to ground if antenna supply voltage is connected. Damage to the EVK or module may occur.



***Always follow ESD safety precautions when utilizing the evaluation kit. For additional information, contact your local sales representative.***

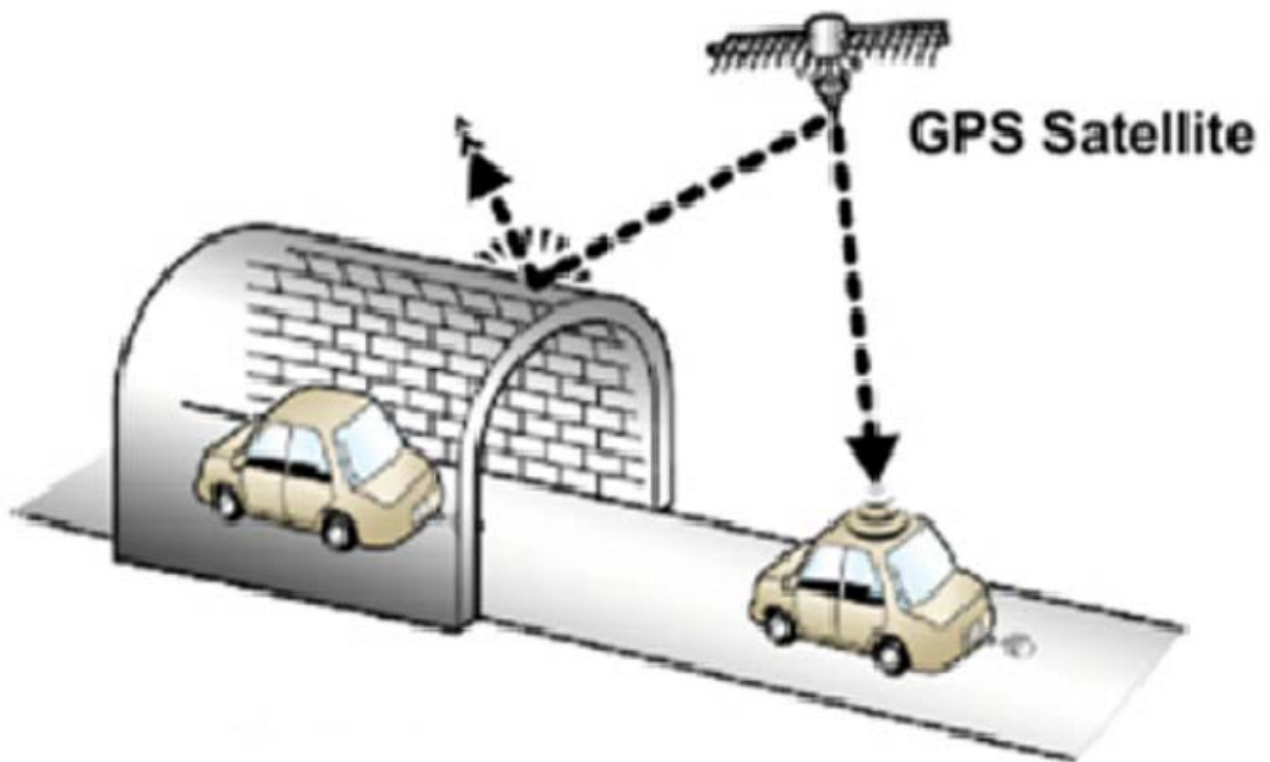
***This module shall be supplied by a limited power source complying with clause 2.5 of EN 60950-1 and mounted on a VI flammability class material or better.***



## 2. Dead Reckoning Overview

Dead reckoning (DR) is the process of estimating one's current position based upon a previously determined position or "fix", and advancing that position from course and speed data (which could be either estimated or measured).

The SL869-3DR receiver provides the user with accurate estimates of a vehicle's position and speed, even during interruptions in GNSS information, combining the best features of GNSS and Sensor navigation.



**Figure 2-1 DR Operation in the absence of GNSS signals**

When GNSS data is available, it provides navigation updates and corrections for sensor drift. When the GNSS signal is interrupted, sensor data (speed and heading) are used to compute the navigation solution.

The result is improved navigation in challenging environments such as urban canyons.







### 3. Evaluation Kit Requirements

To use the SL869-3DR Evaluation Kit (EVK), you will need the following items:

1. An SL869-3DR Evaluation Unit  
(3DR programmed receiver is included in the kit)
2. GNSS antenna (included in the kit)
3. FTDI USB Drivers (included on the USB flash drive)
4. Current version of TelitView  
Note: There is a version of TelitView on the USB Drive supplied in the kit, however for full functionality, the latest version should be downloaded from the Telit Support Site.
5. A PC with a USB port and:
  - o Windows 7 or later
  - o .NET Framework 4.0
6. A test vehicle or test platform that can support MEMS testing.

Preliminary



## 4. Evaluation Kit Description

### 4.1. SL869-3DR EVK Contents



Figure 4-1 SL869-3DR EVK Contents

#### Contents Description

**SL869-3DR Eval Unit:** Evaluation Unit including the Telit SL869-3DR

**GNSS Antenna:** An active antenna powered by the EVK.

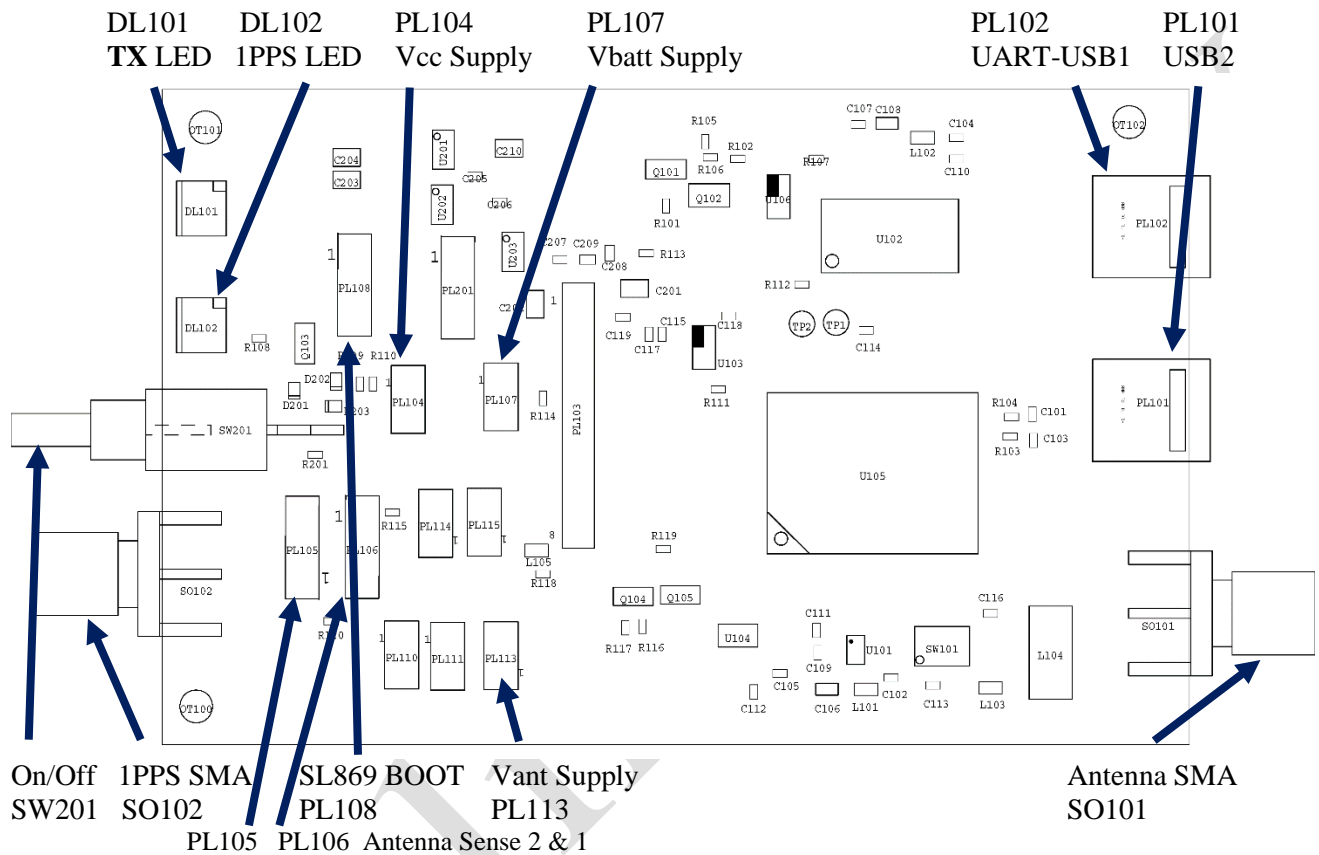
The antenna supports GPS/Glonass/Beidou with an LNA Gain 30 dB)

**USB Cable:** A 6ft mini USB cable used to supply power and communicate to the EVK

**USB Flash Drive:** Contains the tools and documentation for the SL869-3DR



## 4.2. SL869-3DR EVK Main Board Components



### 4.3. SL869-3DR EVK Main Board Component Identification

SL869-3DR Main Board Components		
ID	Name	Description
DL101	TX LED	TX data display
DL102	1PPS LED	1PPS output display
SW 201	ON/OFF Switch	Applies power to the EVK.
SO 102	1PPS Output SMA	1PPS buffer output connector
PL 108	SL869 BOOT Pin	To place the module into BOOT mode, place a shunt jumper on pins 2 & 3 before powering the unit up. Not connected for normal operation.
PL 104	Vcc Supply	Place a shunt jumper to apply 3.3 V to the module Vcc. Required for normal operation.
PL105	Antenna Sense 2	Teseo 3 Antenna Sense 2 input
PL106	Antenna Sense 1	Teseo 3 Antenna Sense 1 input
PL 107	Vbatt Supply	Place a shunt jumper to apply 3.3 V to the module Vbatt. Required if standby power is desired when Vcc is removed.
PL 102	UART-USB1	USB: DC, Ground, TX, RX. Connect to laptop.
PL 101	USB2	Reserved
PL 113	Vant Supply	Place a shunt jumper to apply 3.3 V to the SMA connector for an external active antenna.
PL 201	+3.3 V LDO Antenna supply	Pins 1 & 2: Power LDO_Enable with On/Off switch Pins 2 & 3: Power LDO_Enable with module Pin 4 output
SO 101	Antenna SMA	Antenna: RF Input + Vant

**Table 4-1 SL869-3DR EVK Main Board Component Identification**









## 4.5. SL869-3DR EVK Unit connections



Figure 4-5 EVK Unit connections – rear panel

## 5. SL869-3DR EVK Setup Requirements

### 5.1. Installation and Calibration



1. Note: If NVRAM has been erased (e.g. during flashing), initialization will be required.
2. Place the EVK on a flat and secure surface with the power switch facing toward the front of the vehicle and as close as possible to the center of vehicle. This will allow the gyro to stabilize and the DR FW to store starting point parameters. Once oriented in this position, it should remain in same direction and location to keep results consistent.  
**Insure a rigid mount.**
3. Connect USB from the laptop PC to the EVK port USB1, located at opposite side from the SMA antenna connection.
4. Connect the GNSS antenna.
5. Turn on car and the power up the EVK.
6. Run Telit view and establish connection to the EVK.  
Note: Make sure to select correct COM port and set baud rate 115200.  
See **Section 5.2 Computer Setup and Connection** for examples.
7. Verify NMEA output activity from the EVK when powered on.  
TelitView will also allow you to see and record data from the EVK output.
8. Wait for a valid GNSS position fix.
9. Wait (stopped) for approximately 2 minutes on a flat and level surface with the EVK and vehicle on. Do not allow any vibration or movement during this time.  
This allows the unit to initialize the yaw rate offset with reliable values.
10. After the 2 minutes, SL869-3DR is calibrated and ready to run.



## 5.2. Computer Setup and Connection

Before operation, ensure that the EVK power switch is in the OFF (down) position and the USB drivers are installed by performing the following steps:

1. Insert the USB flash drive and connect the EVK to the PC via the USB-1 connector on the rear of the EVK. Then, turn the Power switch vertically UP to turn On the EVK.
2. As soon as the evaluation board is connected to the PC, it will be detected and the USB driver installed.
3. Note: If a software Installation warning appears select “Continue Anyway” option.



Figure 5-1 Hardware Installation Warning Screen

4. After the EVK is connected, check the “Device Manager” window for the evaluation board COM port number. This information is needed for use with the GPS tools.
5. Connect the provided Active Antenna to the SMA connector.

**NOTE:**

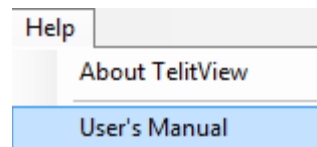


*On some occasions, Windows will install a Microsoft Serial BallPoint mouse after connecting the USB. Uninstall the Microsoft Serial BallPoint mouse if Windows mistakenly installs it.*



## 6. Using TelitView

- Please refer to TelitView user Manual located under the help tap on TelitView for more details.



Launch the TelitView application

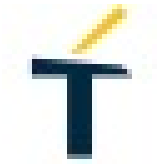


Figure 6-1 TelitView Application Icon

### 6.1. Main Interface

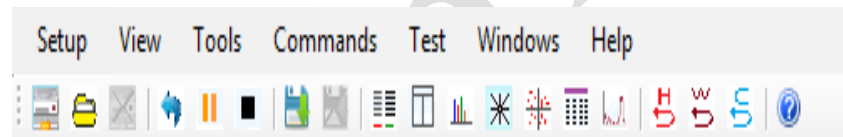


Figure 6-2 TelitView Main Tool Bar

### 6.2. Connecting to the EVK UART

➤ **Main Menu Bar**

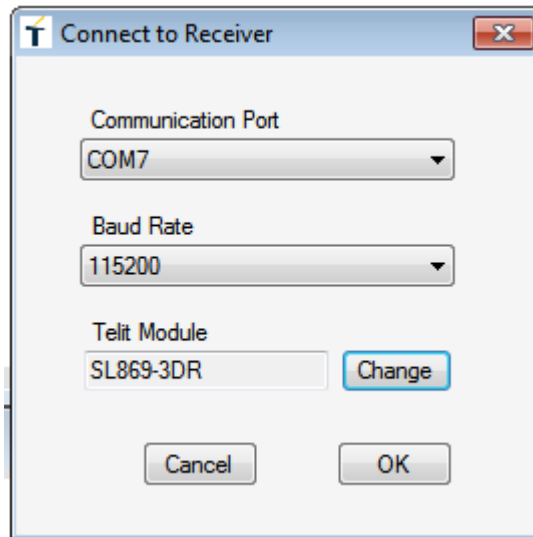
Under the Main Menu Bar, click “Setup” and select “Comm Port”. A “connect to Receiver” window will open.

➤ **Main Tool Bar**

Select the “Connect to Receiver” icon under the Main Tool Bar and the ‘Connect to Receiver’ window will open.

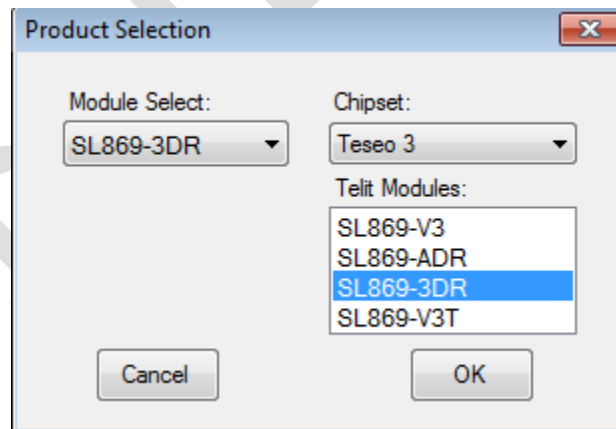


➤ **Connect to Receiver Window**



**Figure 6-3 'Connect to Receiver' Window**

1. Select the correct Communication Port.
2. Select the correct baud rate (SL869-3DR default = 115200).
3. Select “Change” and a “Product Selection” window will appear.
4. From the Products window, select “SL869-3DR” and click “OK”.



**Figure 6-4 Select “SL869-3DR”**



### 6.3. TelitView Tabular View

TelitView implements a tabular view. Switching between tabs displays different information parsed from the receiver.

➤ **Front Panel Status**

The Front Panel Status Tab displays satellite information as well as position information.

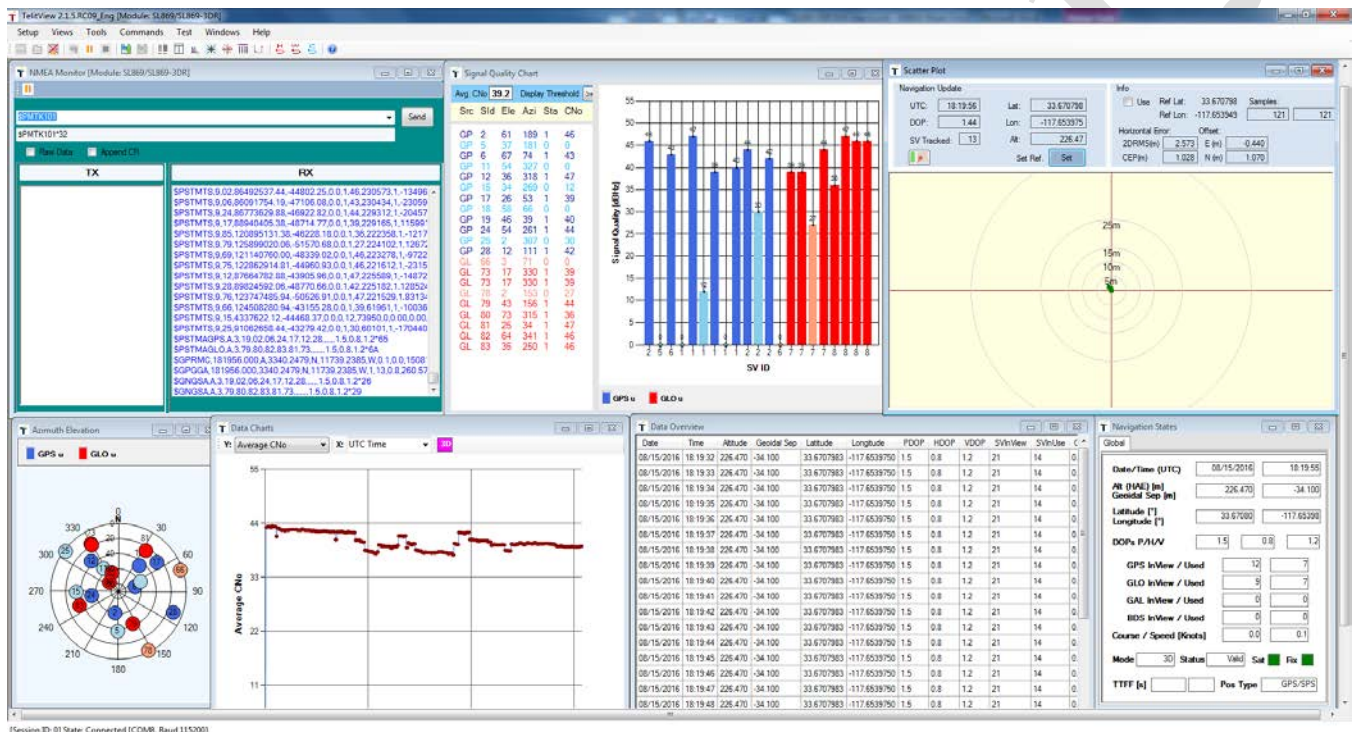


Figure 6-5 TelitView Front Panel Status Tab



➤ **Scatter Plot**

The Scatter Plot displays position points that are updated every second. The position points are compared to each other in an axis in meters.

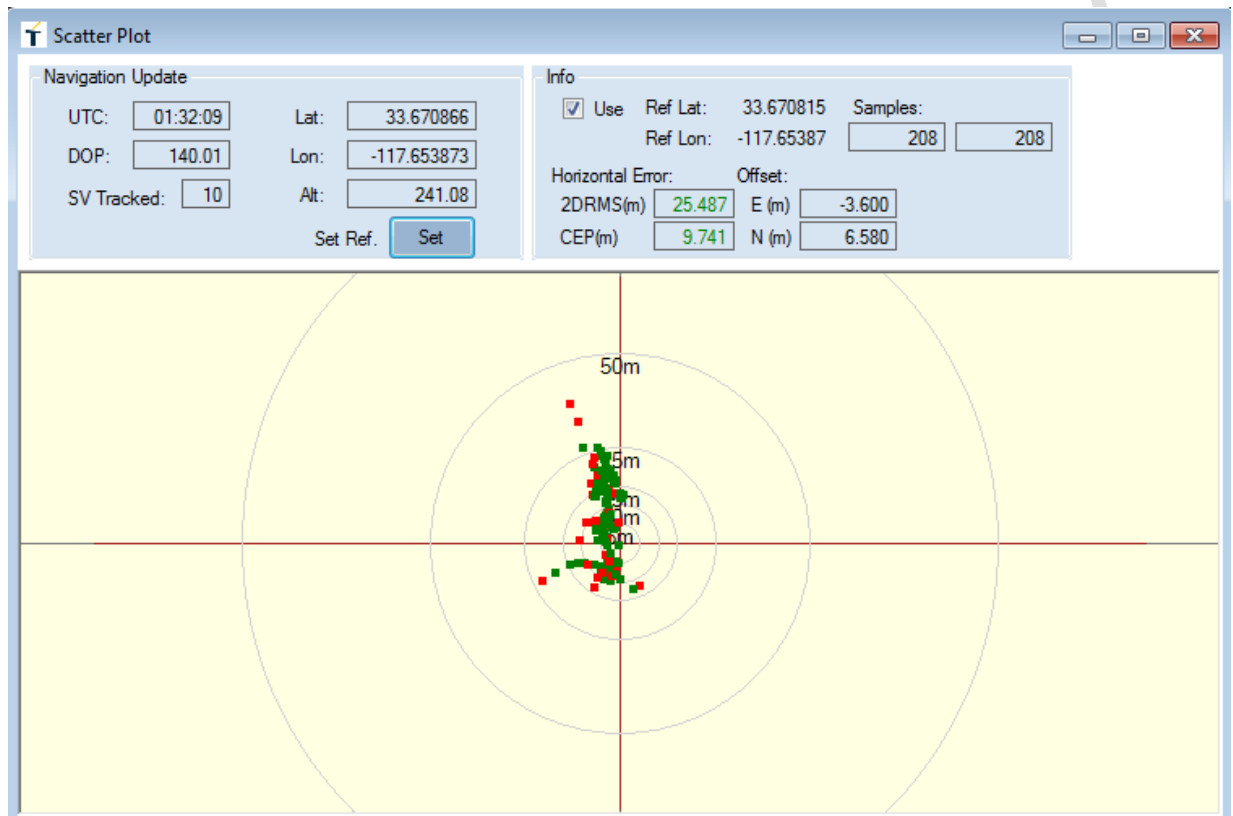
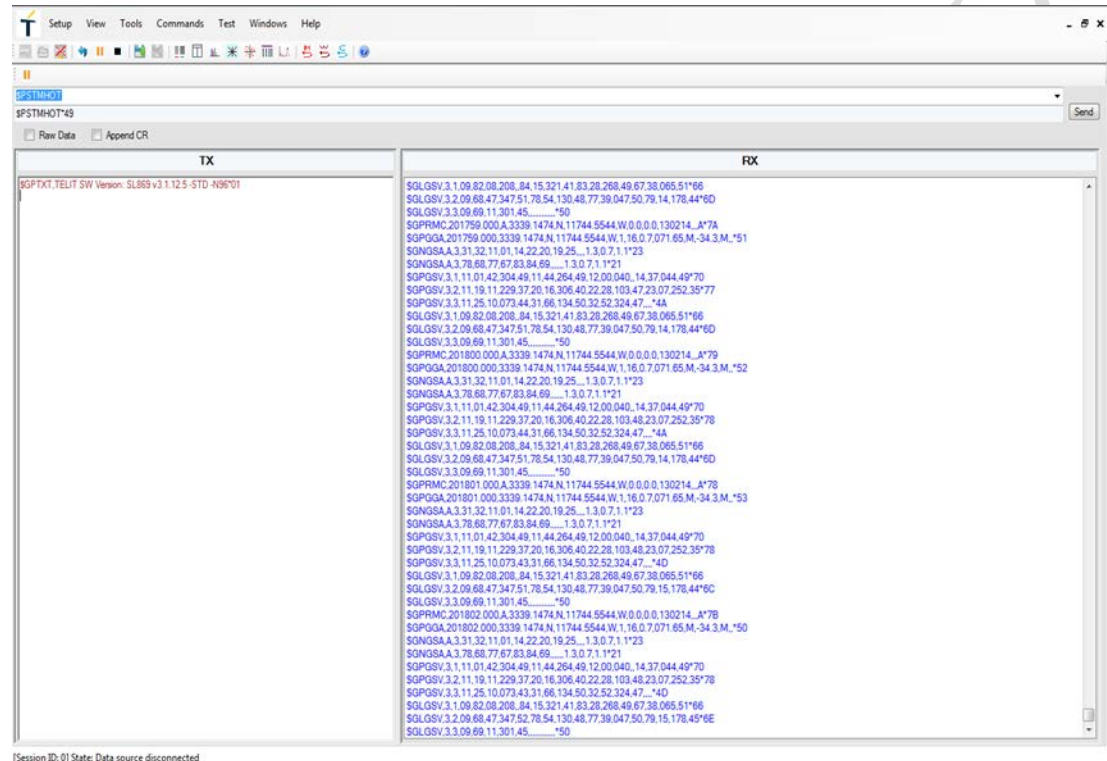


Figure 6-6 TelitView Scatter Plot Tab



➤ **NMEA Monitor**

The NMEA Monitor displays the NMEA output of the receiver. The user can also type in commands in the Transmit toolbar. In order to pause the “Receive” screen, right-click on the window and select “Pause receive”



**Figure 6-7 TelitView NMEA Monitor Tab**



➤ **User Menu Command Manager**

The user has the option to enter basic commands by clicking on the “Commands Tab”. There are 18 available basic commands.

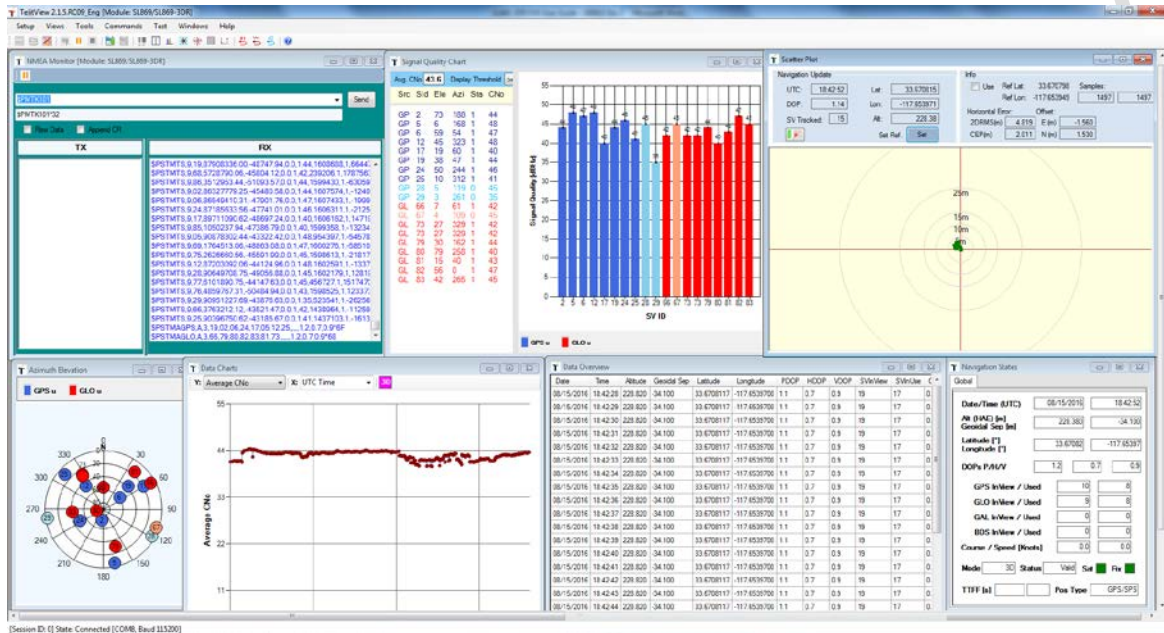
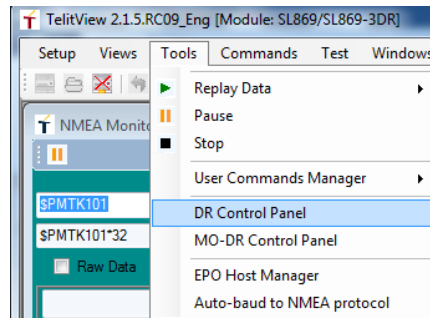


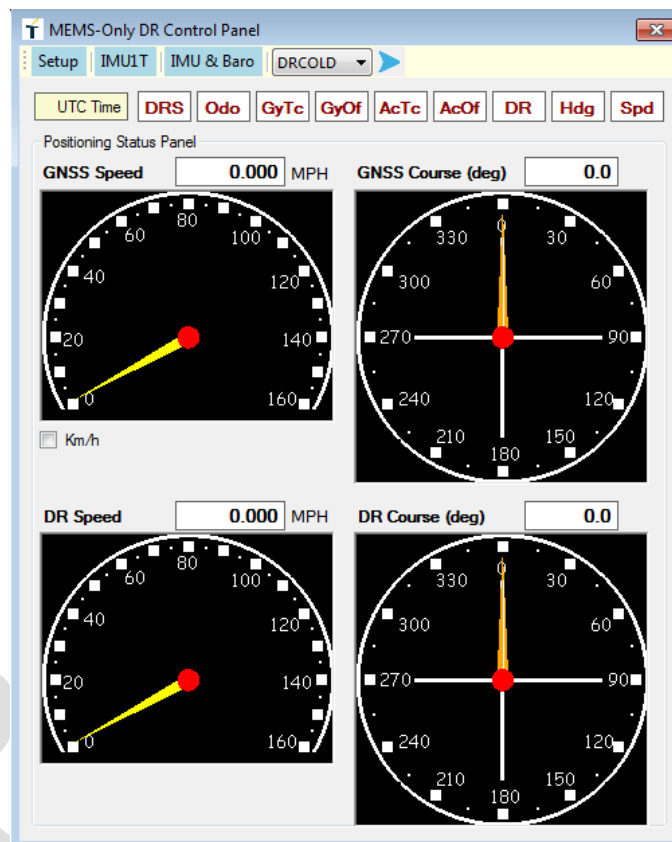
Figure 6-8 User Menu Command Manager

➤ **DR Control Panel and Data View**

To open the SL869-3DR Control panel click Tool > Mo-DR Control Panel



MEMS-Only DR control panel will open.

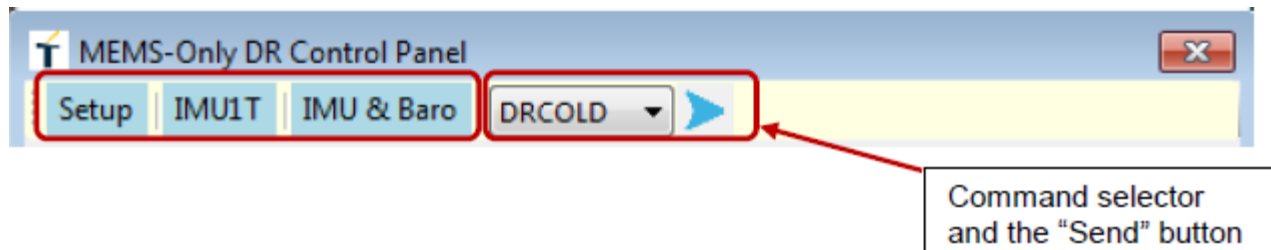


**Figure 6-9 DR Control Panel View**



## MEMS-Only DR Menu Strip

This control panel Displayed at the top is the menu strip with selection buttons:



**Figure 7-0 Menu strip on MEMS-Only DR Control Panel**

These buttons perform the following functions:

**“Setup” button**

User can click this button to launch a MEMS-Only DR setup window, which has the capability to process relevant data to provide display that will help the installation – orientation and placement - of the sensor.

**“IMU1T” button**

IMU (Inertial Measurement Unit) that uses a combination of accelerometers and gyroscopes and in some cases magnetometers.

User can click this button to launch a view window to display the data fields and the update of the Telit GNSS proprietary message “IMU1T”.

**“IMU & Baro” button**

User can click this button to launch another view window to display the data fields and the update of the Telit GNSS proprietary messages “\$PTWSIMU, RAW” and “\$PTWSBARO, RAW”. They are the raw output data of IMU unit and the barometer unit.

**MODR Command selector**

User may choose a command from the dropdown list to send to the receiver.

Currently supported commands include:

- DR Cold Restart: DRCOLD
- DR Factory Reset: FACTRST

**Send Command Button**

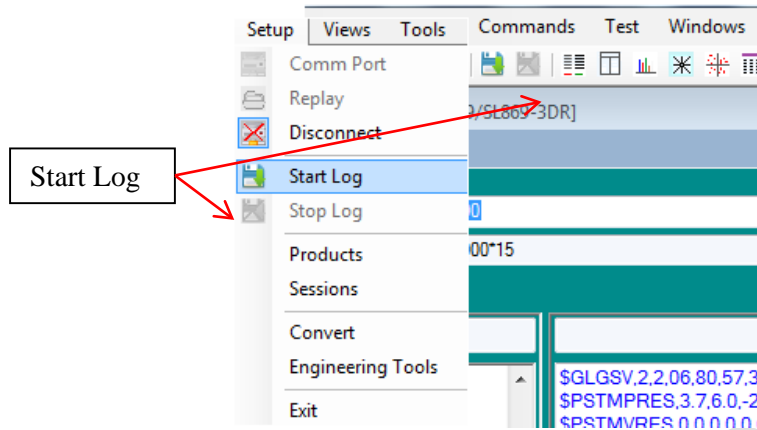
Right next to the DR command selector is the “send command” button. User clicks it to send the chosen command to the com port.







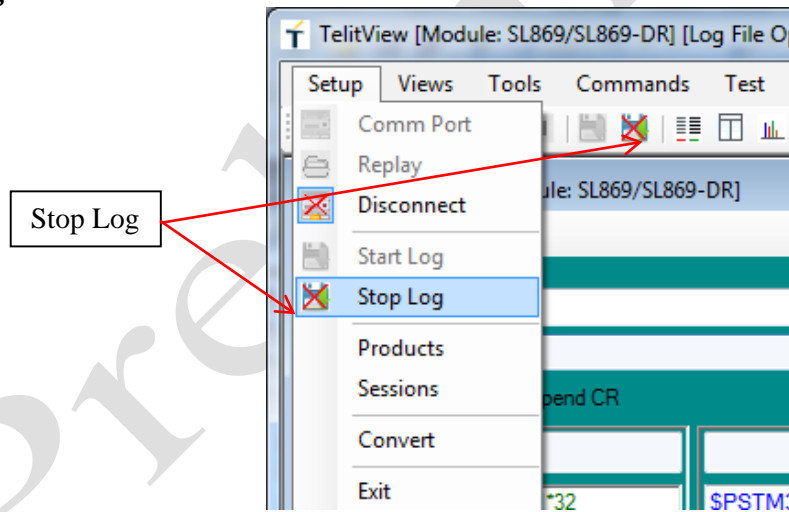
## Start Log



**Figure 6-10 Start Log Button**

User can click the “Start Log” button either from the “Setup” menu or the icon on the toolbar to start logging.

## Stop Log



**Figure 6-11 Stop Log Button**

User can click the “Stop Log” button either from the “Setup” menu or the icon on the toolbar, to stop logging.

After data logging is stopped, the title bar in TelitView will display the updated logging status; showing that the log files are closed.





## 7. Flashing Firmware with TeseoIII X-Loader

Note that X-loader requires use of the BOOT pin. If this pin is not available in a user's design, you will need to run the FW Upgrade Tool (UPG).

The EVK will be preloaded with firmware, however if updates are required, perform the following steps:

### 7.1. Flashing Requirements

- SL869-3DR software from TELIT
- TESEOIII X-Loader v1.13 (or newer) from TELIT

### 7.2. Flashing Instructions



**Note:** Do not erase NVM, or the Initialization procedure will have to be performed.

1. Install a shunt jumper on Main Board SL869 BOOT (pins 2 & 3), shorting the pins together.
2. Connect the USB cable and let the Host PC machine enumerate the USB connection.
3. Set SW201 (Main Power) to ON (up) to power the SL869-3DR receiver.
4. Launch the TESEOIII X-Loader and set the selections as shown in the figure below.

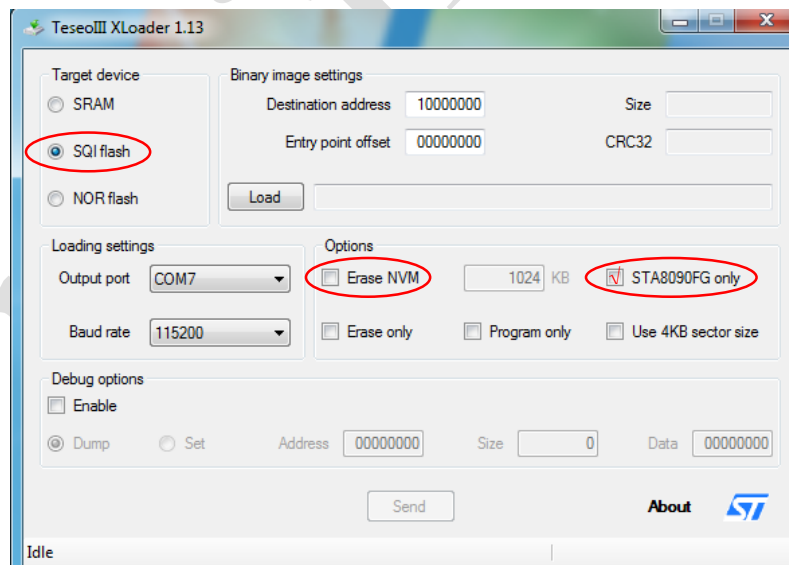


Figure 7-1 TESEOIII X-Loader



5. Click on the Load button, then locate and select the software provided by Telit.
6. Verify selections as follows:
  - “Target device” is SQI flash
  - “Erase NVM” is **not** selected
  - “STA8090FG Only” is selected
  - Output Port matched your configuration
7. After selecting the correct configuration and the selected COM port is properly identified (Look under Device Manager in Windows OS for COM port if cannot be identified/found), click on “Send” to program the device.  
When done, a pop up window will confirm, “Device successfully programmed”.
8. Remove the shunt jumper from Step 1.
9. Cycle power to EVK. Verify NMEA data is streaming out with TelitView under the NMEA Monitor window.

Preliminary



