



BlueEva+S50/Central Evaluation Kit User Guide

1VV0301519 Rev. 0 – 2018-03-16

TELIT
TECHNICAL
DOCUMENTATION

SPECIFICATIONS ARE SUBJECT TO CHANGE WITHOUT NOTICE

NOTICE

While reasonable efforts have been made to assure the accuracy of this document, Telit assumes no liability resulting from any inaccuracies or omissions in this document, or from use of the information obtained herein. The information in this document has been carefully checked and is believed to be reliable. However, no responsibility is assumed for inaccuracies or omissions. Telit reserves the right to make changes to any products described herein and reserves the right to revise this document and to make changes from time to time in content hereof with no obligation to notify any person of revisions or changes. Telit does not assume any liability arising out of the application or use of any product, software, or circuit described herein; neither does it convey license under its patent rights or the rights of others.

It is possible that this publication may contain references to, or information about Telit products (machines and programs), programming, or services that are not announced in your country. Such references or information must not be construed to mean that Telit intends to announce such Telit products, programming, or services in your country.

COPYRIGHTS

This instruction manual and the Telit products described in this instruction manual may be, include or describe copyrighted Telit material, such as computer programs stored in semiconductor memories or other media. Laws in the Italy and other countries preserve for Telit and its licensors certain exclusive rights for copyrighted material, including the exclusive right to copy, reproduce in any form, distribute and make derivative works of the copyrighted material. Accordingly, any copyrighted material of Telit and its licensors contained herein or in the Telit products described in this instruction manual may not be copied, reproduced, distributed, merged or modified in any manner without the express written permission of Telit. Furthermore, the purchase of Telit products shall not be deemed to grant either directly or by implication, estoppel, or otherwise, any license under the copyrights, patents or patent applications of Telit, as arises by operation of law in the sale of a product.

COMPUTER SOFTWARE COPYRIGHTS

The Telit and 3rd Party supplied Software (SW) products described in this instruction manual may include copyrighted Telit and other 3rd Party supplied computer programs stored in semiconductor memories or other media. Laws in the Italy and other countries preserve for Telit and other 3rd Party supplied SW certain exclusive rights for copyrighted computer programs, including the exclusive right to copy or reproduce in any form the copyrighted computer program. Accordingly, any copyrighted Telit or other 3rd Party supplied SW computer programs contained in the Telit products described in this instruction manual may not be copied (reverse engineered) or reproduced in any manner without the express written permission of Telit or the 3rd Party SW supplier. Furthermore, the purchase of Telit products shall not be deemed to grant either directly or by implication, estoppel, or otherwise, any license under the copyrights, patents or patent applications of Telit or other 3rd Party supplied SW, except for the normal non-exclusive, royalty free license to use that arises by operation of law in the sale of a product.

USAGE AND DISCLOSURE RESTRICTIONS

I. License Agreements

The software described in this document is the property of Telit and its licensors. It is furnished by express license agreement only and may be used only in accordance with the terms of such an agreement.

II. Copyrighted Materials

Software and documentation are copyrighted materials. Making unauthorized copies is prohibited by law. No part of the software or documentation may be reproduced, transmitted, transcribed, stored in a retrieval system, or translated into any language or computer language, in any form or by any means, without prior written permission of Telit.

III. High Risk Materials

Components, units, or third-party products used in the product described herein are NOT fault-tolerant and are NOT designed, manufactured, or intended for use as on-line control equipment in the following hazardous environments requiring fail-safe controls: the operation of Nuclear Facilities, Aircraft Navigation or Aircraft Communication Systems, Air Traffic Control, Life Support, or Weapons Systems (High Risk Activities"). Telit and its supplier(s) specifically disclaim any expressed or implied warranty of fitness for such High Risk Activities.

IV. Trademarks

TELIT and the Stylized T Logo are registered in Trademark Office. All other product or service names are the property of their respective owners.

V. Third Party Rights

The software may include Third Party Right software. In this case you agree to comply with all terms and conditions imposed on you in respect of such separate software. In addition to Third Party Terms, the disclaimer of warranty and limitation of liability provisions in this License shall apply to the Third Party Right software.

TELIT HEREBY DISCLAIMS ANY AND ALL WARRANTIES EXPRESS OR IMPLIED FROM ANY THIRD PARTIES REGARDING ANY SEPARATE FILES, ANY THIRD PARTY MATERIALS INCLUDED IN THE SOFTWARE, ANY THIRD PARTY MATERIALS FROM WHICH THE SOFTWARE IS DERIVED (COLLECTIVELY "OTHER CODE"), AND THE USE OF ANY OR ALL THE OTHER CODE IN CONNECTION WITH THE SOFTWARE, INCLUDING (WITHOUT LIMITATION) ANY WARRANTIES OF SATISFACTORY QUALITY OR FITNESS FOR A PARTICULAR PURPOSE.

NO THIRD PARTY LICENSORS OF OTHER CODE SHALL HAVE ANY LIABILITY FOR ANY DIRECT, INDIRECT, INCIDENTAL, SPECIAL, EXEMPLARY, OR CONSEQUENTIAL DAMAGES (INCLUDING WITHOUT LIMITATION LOST PROFITS), HOWEVER CAUSED AND WHETHER MADE UNDER CONTRACT, TORT OR OTHER LEGAL THEORY, ARISING IN ANY WAY OUT OF THE USE OR DISTRIBUTION OF THE OTHER CODE OR THE EXERCISE OF ANY RIGHTS GRANTED UNDER EITHER OR BOTH THIS LICENSE AND THE LEGAL TERMS APPLICABLE TO ANY SEPARATE FILES, EVEN IF ADVISED OF THE POSSIBILITY OF SUCH DAMAGES.

APPLICABILITY TABLE

PRODUCTS

- BLUEEVA+S50/AI/CEN

CONTENTS

NOTICE	2
COPYRIGHTS	2
COMPUTER SOFTWARE COPYRIGHTS	2
USAGE AND DISCLOSURE RESTRICTIONS	3
APPLICABILITY TABLE	4
CONTENTS	5
1. INTRODUCTION	7
1.1. Scope	7
1.2. Audience	7
1.3. Contact and Support Information	7
1.4. Text Conventions	8
1.5. Related Documents	8
2. PACKAGE CONTENT	9
3. HARDWARE	10
3.1. BlueMod+S50	10
3.2. Reset	10
3.3. USB Interface	10
3.4. LEDs	11
3.5. External Low Power Oscillator	11
3.6. Connectors / Jumpers	11
3.6.1. Jumper J2	11
3.6.2. Jumper J3	11
3.6.3. Jumper J4	11
3.6.4. Connector X2	12
3.6.5. Connector X3	13
3.6.6. Connector X4	14
3.7. Current Measurement	14
3.8. Power Supply	14
3.8.1. USB Power Supply	14
3.8.2. External Power Supply	14
3.8.3. Battery Holder	14
3.9. Buzzer	14

3.10.	Push Button	14	
3.11.	How To Interface the UART Lines on TTL level	15	
3.12.	Default Configuration	16	
4.	SETUP	17	
4.1.	System Requirements.....	17	
4.2.	Startup.....	17	
4.3.	Installation of the BlueEva+S50/Central USB Driver	17	
5.	USAGE OF THE BLUEEVA+S50/CENTRAL.....	18	
5.1.	Configuration of the BlueEva+S50/Central.....	18	
5.2.	Connection with Telit “Terminal IO Utility” App.....	22	
5.3.	NFC Handover.....	28	
5.3.1.	Configure the BlueEva+S50/Central for NFC Handover.....	28	
5.3.2.	Example to Demonstrate the NFC Handover	29	
6.	FIRMWARE UPDATE	30	
6.1.	Telit IoT Updater	30	
6.2.	Firmware Update Over the Air (OTA).....	32	
6.2.1.	Firmware Update Over The Air using Nordic nRF Toolbox on Android		32
7.	DOCUMENT HISTORY	36	

1. INTRODUCTION

1.1. Scope

This document describes the usage of the evaluation kit for the Bluetooth module BlueMod+S50.

1.2. Audience

This document is intended for Telit customers, especially system integrators, about to implement Bluetooth modules in their application.

1.3. Contact and Support Information

For general contact, technical support services, technical questions and report documentation errors contact Telit Technical Support at:

- TS-SRD@telit.com

Alternatively, use:

<https://www.telit.com/contact-us/>

For detailed information about where you can buy the Telit modules or for recommendations on accessories and components visit:

<https://www.telit.com/>

Our aim is to make this guide as helpful as possible. Keep us informed of your comments and suggestions for improvements.

Telit appreciates feedback from the users of our information.

1.4. Text Conventions



Danger – This information **MUST** be followed or catastrophic equipment failure or bodily injury may occur.



Caution or Warning – Alerts the user to important points about integrating the module, if these points are not followed, the module and end user equipment may fail or malfunction.



Tip or Information – Provides advice and suggestions that may be useful when integrating the module.

All dates are in ISO 8601 format, i.e. YYYY-MM-DD.

1.5. Related Documents

- [1] BlueMod+S50 Hardware User Guide, 1VV0301505
- [2] UICP+ UART Interface Control Protocol, 30507ST10756A
- [3] BlueMod+S50/Central AT Command Reference, 80578ST10890A
- [4] BlueEva+S50 Schematics

2. PACKAGE CONTENT

The BlueEva+S50/Central package contains the following components:

- 1 x BlueEva+S50 board
- 1 x NFC Antenna Class6/V1.0
- 1 x Mini USB cable
- 1 x Battery CR2032
- 1 x Printed card with download instructions



Figure 1: BlueEva+S50/Central package content

3. HARDWARE

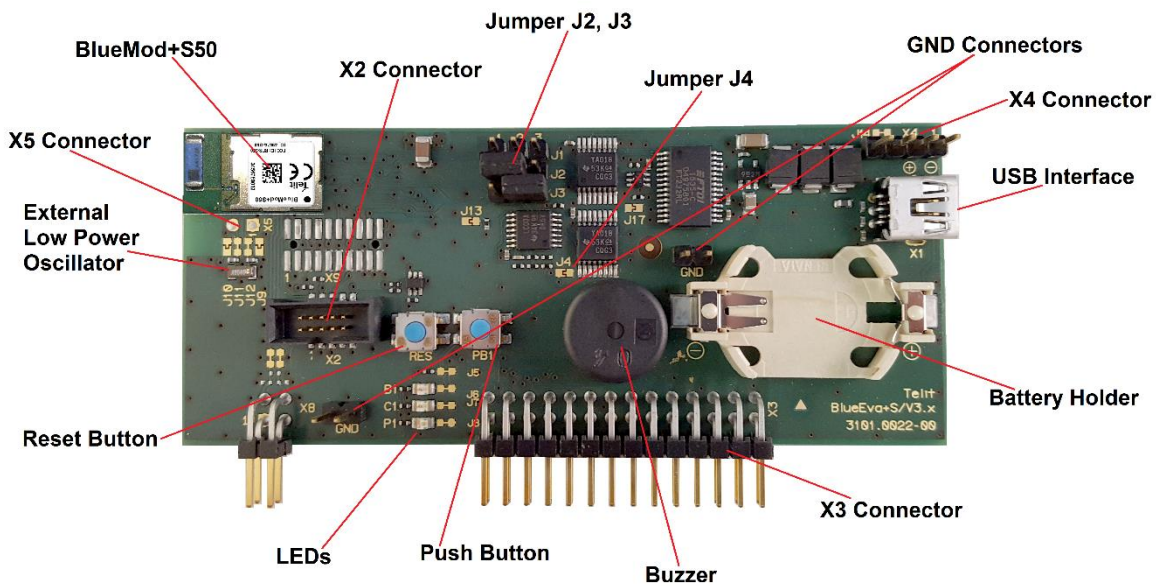


Figure 2: BlueEva+S50

3.1. BlueMod+S50

The BlueEva+S50/Central is equipped with a BlueMod+S50 Bluetooth module.

3.2. Reset

The BlueEva+S50/Central is equipped with a reset button. Pressing the reset button will trigger the BlueMod+S50 module to perform a reset. The USB port is not influenced by the reset.

3.3. USB Interface

The BlueEva+S50/Central provides an USB interface which is used to connect the evaluation board to the host and as power supply.

The USB interface is equipped with an FTDI USB to serial bridge, interfacing the serial port of the BlueMod+S50.

The serial port is a high-speed UART interface at CMOS levels and supports the following features:

- Transmission speed: 9,600 – 921,600 bps (asynchronous)
- Character representation: 8 bit, no parity, 1 stop bit (8N1)
- Hardware flow-control with RTS/CTS (active low)

For details please refer to the BlueMod+S50 Hardware User Guide [1].

3.4. LEDs

The BlueEva+S50/Central provides several LEDs for functional indication.

Interface	Position	Function
LEDs	B1	Connected to GPIO[3] ⁽¹⁾
	C1	Connected to GPIO[2] ⁽¹⁾
	P1	Indicates the presence of power supply voltage

⁽¹⁾ Function depending on firmware support

3.5. External Low Power Oscillator

The BlueEva+S50/Central provides an external low power crystal. This is connected to the BlueMod+S50 by default. For using alternatively low power oscillator sources refer to the schematics [4] and the BlueMod+S50 Hardware User Guide [1].

3.6. Connectors / Jumpers

3.6.1. Jumper J2

Jumper J2 provides the possibility to invoke the bootloader at start-up. This is required for firmware update.

J2 Position	Function
1-2	Normal application start
2-3	Invoke bootloader at start-up (BOOT0)

3.6.2. Jumper J3

Jumper J3 is used for either hangup or UICP functionality.

In hangup mode DTR# is connected to GPIO[4]. An existing connection is terminated by DTR drop (high signal on DTR#).

In UICP mode DTR# is used as IUR-IN# signal. UICP is an advanced power management protocol. For further information about UICP please refer to the UICP UART Interface Control Protocol Specification [2].

J3 Position	Function
1-2	DTR# connected to IUR-IN#
2-3	DTR# connected to GPIO[4]

3.6.3. Jumper J4

Jumper J4 provides the possibility to disable (by closing it with a soldering point) the USB to serial bridge. With a closed jumper J4, the in- and outputs of the FTDI chip are disconnected. Therefore the modules serial port can be controlled via Connector X3 (see chapter 0).

When using BlueEva+S50/Central, be sure to connect a serial interface via connector X3 only when jumper J4 is closed. Otherwise the serial interface and the USB to serial bridge will collide.

3.6.4. Connector X2

Connector X2 is used as “Debug in” to connect a debugger to the BlueMod+S50 module.

3.6.5. Connector X3

Connector X3 is a 28 pin extension header exposing all module signals.

Pin Number	Signal	Type	Description
1	+3V0	PWR	Supply voltage output
2	+3V0	PWR	Supply voltage output
3	GND	PWR	Ground
4	GND	PWR	Ground
5	GPIO[0]	DIS	Reserved
6	GPIO[1]	DIS	Reserved
7	GPIO[2]	DIS	Reserved
8	GPIO[3]	O / DIS	IOB
9	GPIO[4]	I-PD	HANGUP
10	GPIO[5]	DIS	Reserved
11	GPIO[6]	DIS	Reserved
12	GPIO[7]	DIS	Reserved
13	GPIO[8]	O / DIS	IOA
14	GPIO[9]	DIS	Reserved
15	GPIO[10]	DIS	Reserved
16	GPIO[11]	DIS	Reserved
17	GPIO[12]	DIS	Reserved
18	GPIO[13]	DIS	Reserved
19	GPIO[14]	DIS	Reserved
20	XL-OUT/SLCK	LXFO	32,768kHz slow clock crystal (optional, leave open without crystal), see schematic ⁽¹⁾
21	XL-IN/SLCK	LXFO	32,768kHz slow clock crystal (optional, leave open without crystal), see schematic ⁽¹⁾
22	EXT-RES#	I-PU	User reset
23	UART-TXD ⁽²⁾	O-PP	UART data OUT
24	UART-RXD ⁽²⁾	I	UART data IN
25	UART-CTS# ⁽²⁾	I / I-PD	Flow control / IUC_IN
26	UART-RTS# ⁽²⁾	O-PP	Flow control / IUC_OUT
27	IUR-IN# ⁽²⁾	I / DIS	UICP control
28	IUR-OUT# ⁽²⁾	O / DIS	UICP control

PU = PullUp, PD = PullDown, PP = PushPull, DIS = Disconnected, LXFO = Low Frequency Crystal I/O

⁽¹⁾ Function depending on firmware support

⁽²⁾ BlueEva+S50/Central: Disconnected from module, when jumper J4 is open

3.6.6. Connector X4

Connector X4 provides the possibility to measure the supply current of the BlueMod+S50 and to power the evaluation board with an external power supply.

Pin Number	Signal
1	GND
2	ext. PWR
3	+3V0
4	+3V0-BT

3.7. Current Measurement

Current measurement can be performed by opening (cut off) jumper J14 and measuring the current drawn by BlueMod+S50 between pin 3 and 4 of connector X4. The currents drawn by other peripherals on BlueEva+S50 are not included in this measurement.

For measuring the minimum current, the serial interface must be disconnected from the module. This can be achieved by disconnecting the USB plug and powering the board via external or battery supply or by closing solder jumper J4.

3.8. Power Supply

The three power sources are decoupled from each other by diodes connected in series. The presence of the supply voltage is indicated by LED P1.

3.8.1. USB Power Supply

VBUS of the USB connector X1 directly powers the USB to serial converter and via a voltage regulator the rest of the circuitry.

3.8.2. External Power Supply

Pin 1 and 2 of connector X4 provides the possibility to connect an external power supply (see BlueMod+S50 Hardware User Guide [1]).

3.8.3. Battery Holder

The battery holder provides the possibility to run the BlueEva+S50/Central without external power (via USB or external power supply) by using a 3V coin cell battery CR2032. Opening jumper J8 will disconnect the power LED P1 and thus save 1.8mA of battery current. For safety reasons there should be permanently connected no other power supply, when a battery is inserted.

3.9. Buzzer

The Buzzer ⁽¹⁾ can be used to generate alarm and other audible signals.

⁽¹⁾ Function depending on firmware support

3.10. Push Button

The Push Button ⁽¹⁾ can be used as input for human interaction.

⁽¹⁾ Function depending on firmware support

3.11. How To Interface the UART Lines on TTL level



If you want to access the UART lines directly it is important to disable the onboard USB to serial bridge by closing jumper J4 with a soldering point.

All UART signals are available at connector X3 and can be connected to your application.

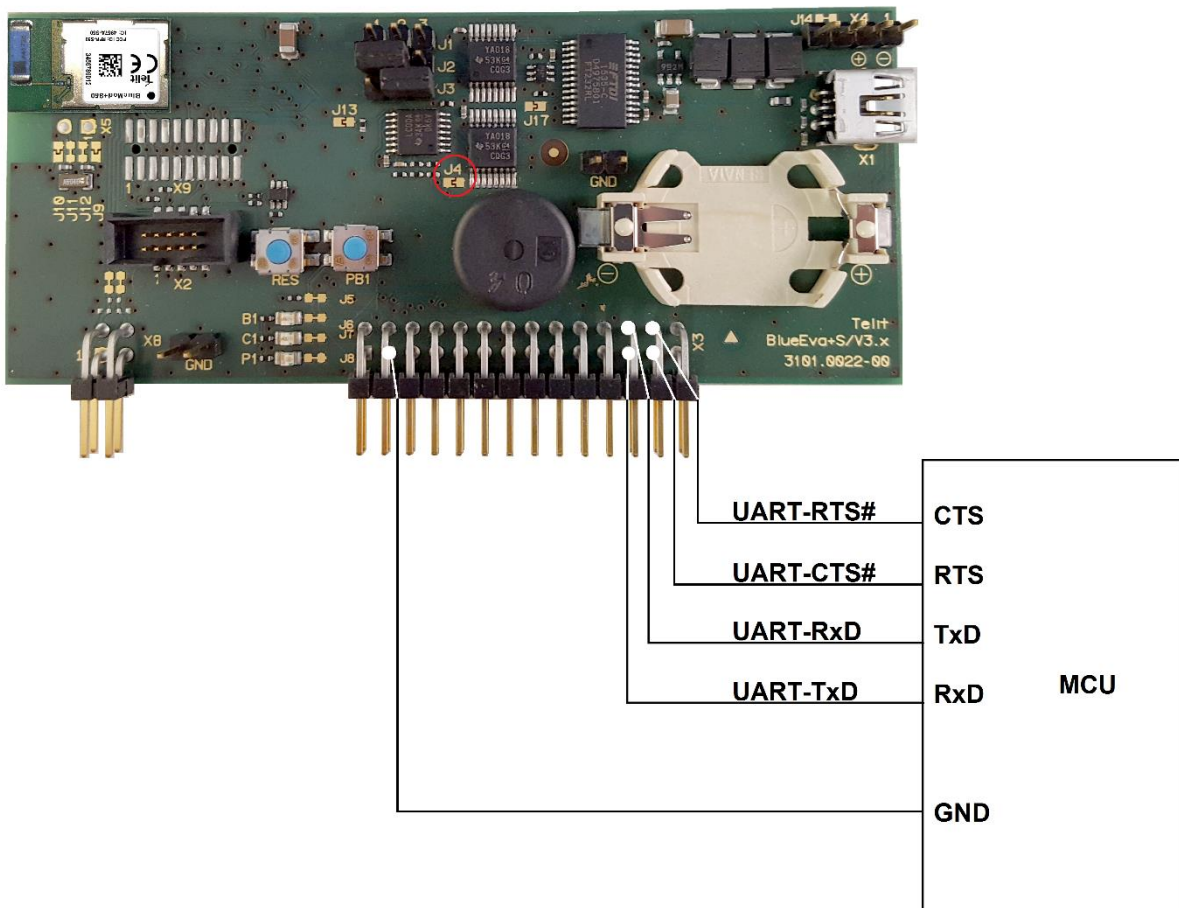


Figure 3: MCU connected to UART lines

3.12. Default Configuration

The BlueEva+S50/Central is preconfigured as described below:

Jumper Number	Position	Function
J2	1-2	Normal operation mode at start-up
J3	2-3	DTR# connected to GPIO[4] (Hangup mode)

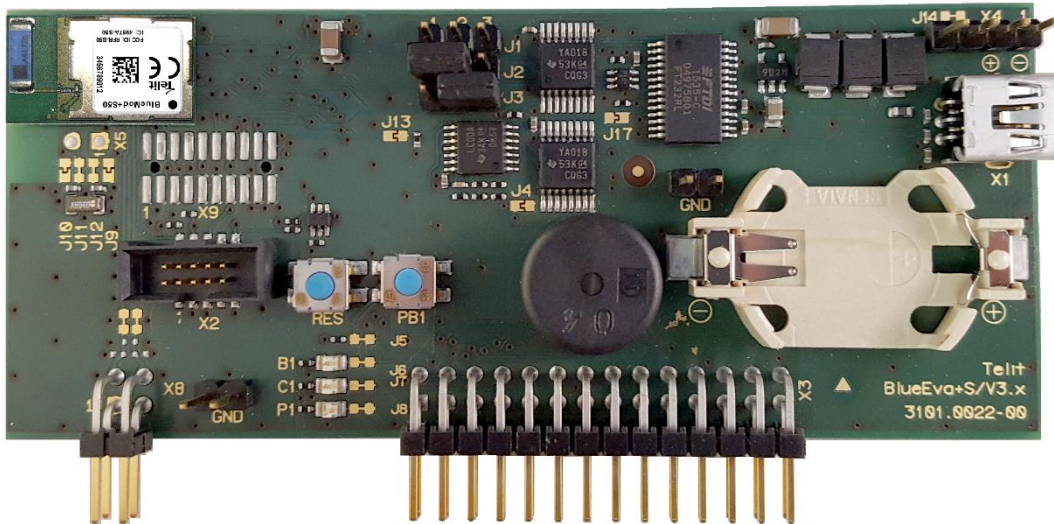


Figure 4: BlueEva+S50/Central default configuration

4. SETUP

4.1. System Requirements

- PC with Windows® XP or higher
- 1 free USB port
- Adobe Acrobat® Reader for reading the documentation

4.2. Startup

To install the BlueEva+S50/Central connect it as follows.

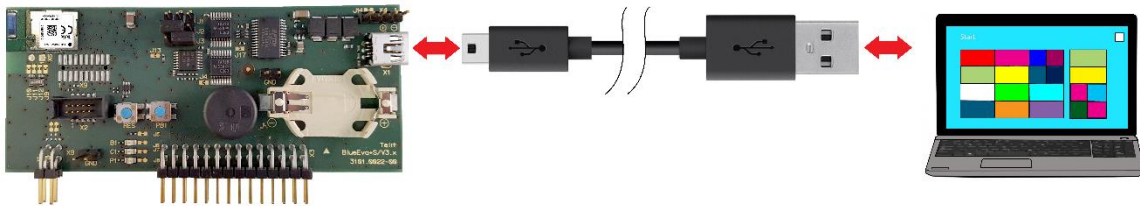


Figure 5: Connect the BlueEva+S50/Central to your PC

4.3. Installation of the BlueEva+S50/Central USB Driver

If required download the latest FTDI VCP USB to UART driver from:

<http://www.ftdichip.com/Drivers/VCP.htm>

Connect the BlueEva+S50/Central to a free USB port of a PC and install the USB device drivers by following the instructions of the Windows® Hardware Wizard using the downloaded FTDI VCP USB to UART driver.

The USB connection is used for power supply and for UART communication to a PC over a virtual COM port. This lets you use a terminal emulation program to perform the configuration or to control the Bluetooth connection.

You may use the Telit AT Controller (version 3.4.11 or higher) to communicate with the BlueEva+S50/Central. The Telit AT Controller is available in the download zone.

5. USAGE OF THE BLUEEVA+S50/CENTRAL

5.1. Configuration of the BlueEva+S50/Central

If the BlueEva+S50/Central is correctly connected to the PC, the Telit AT Controller (or any other terminal emulation program) can be used to read and modify the configuration settings.



Figure 6: Telit AT Controller main menu

As shipped by the factory, the BlueEva+S50/Central works at 115,200 bps, using the 8N1 data format (8 data bits, no parity, 1 stop bit). Please configure the Telit AT Controller accordingly. Select the COM port the BlueEva+S50/Central is connected to (COM7 in the example below).

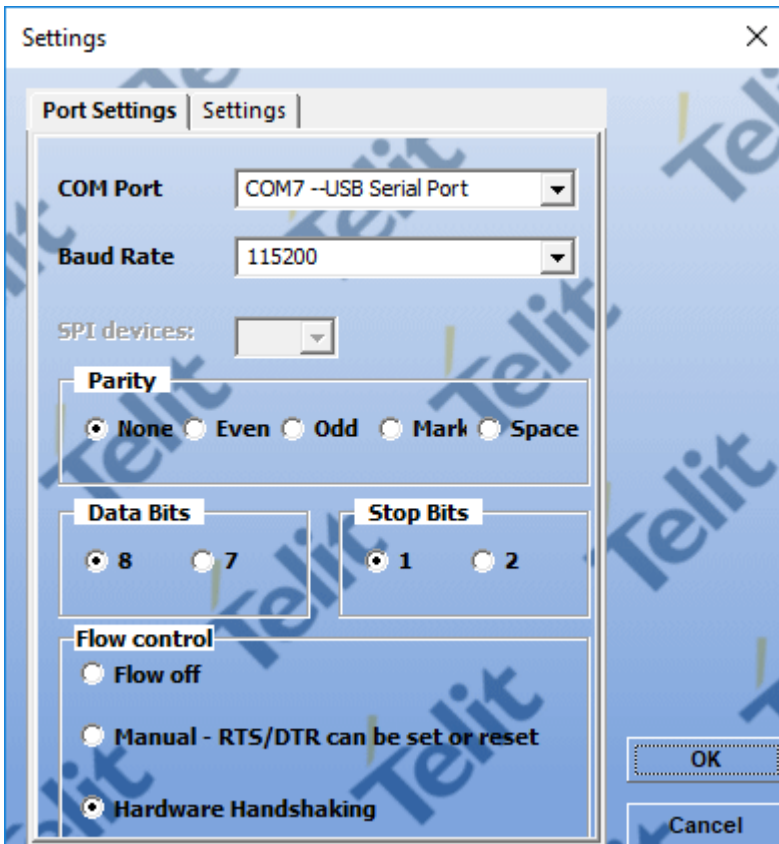


Figure 7: Telit AT Controller settings

Once you have successfully configured the Telit AT Controller press the “Connect” button to connect to the BlueEva+S50/Central and receive the device information.



Figure 8: Telit AT Controller device information

Now you can start the AT Terminal to communicate with the BlueEva+S50/Central using AT commands (e.g. set the local device name with `at+bname=test123`).

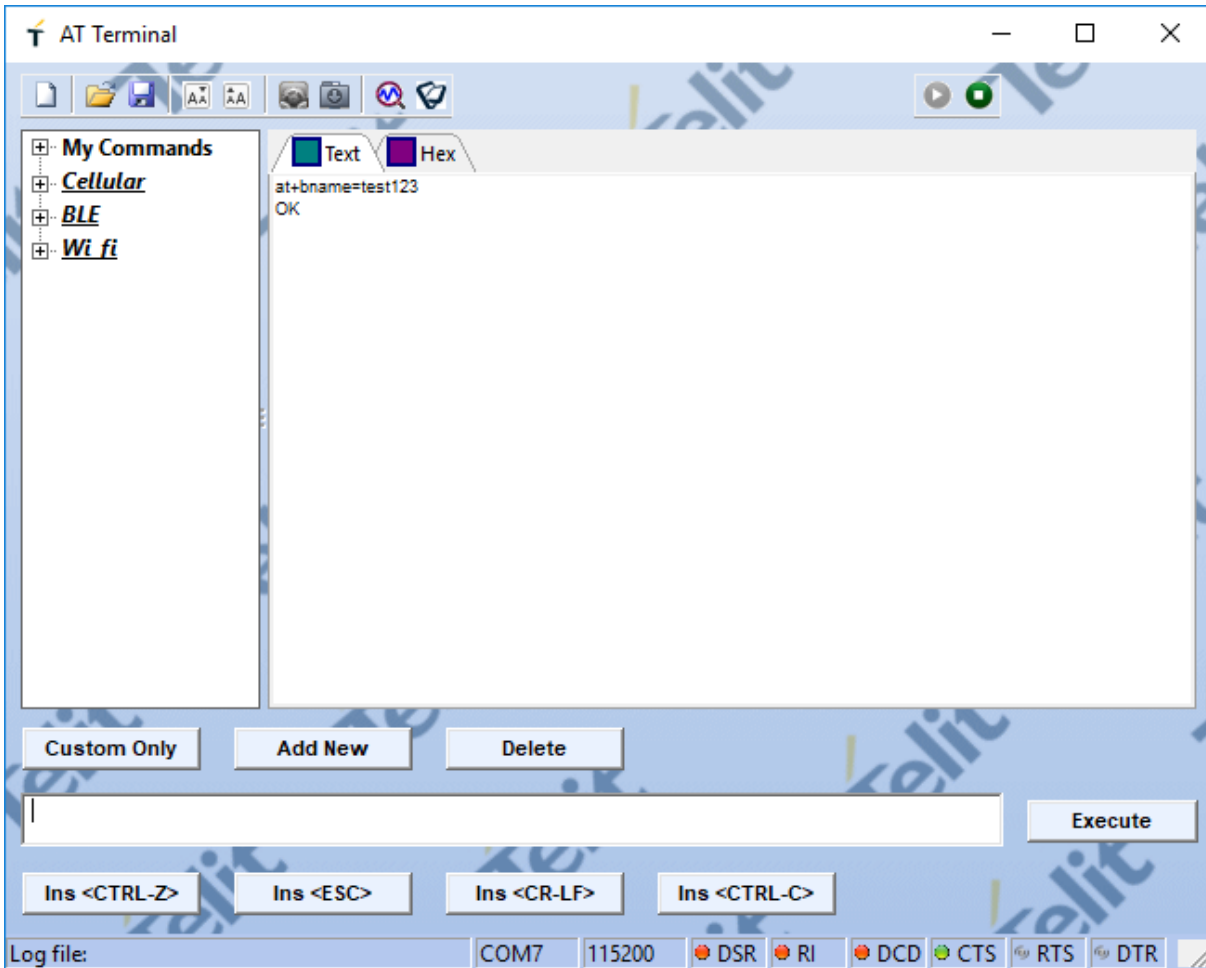


Figure 9: AT Terminal communication

For a more detailed description of the AT commands used for this purpose, please consult our BlueMod+S50/Central AT Command Reference [3].

5.2. Connection with Telit “Terminal IO Utility” App

Telit provides the "Terminal IO Utility" App for iOS and Android which can be used to establish a Bluetooth Low Energy connection from a smartphone to the BlueEva+S50/Central.

The following QR-Codes provide the link to download the "Terminal IO Utility".

iOS



Logo

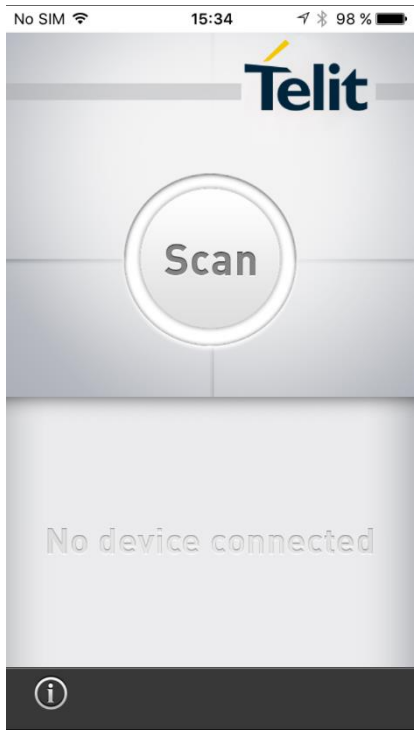


Android



The “Terminal IO Utility” App allows the user to connect to Terminal I/O peripheral devices and exchange data providing a simple terminal emulation.

Please find below an example using the “Terminal IO Utility” App for iOS:

<p>Press the “Scan” button to search for available Terminal I/O peripheral devices.</p>	
---	--

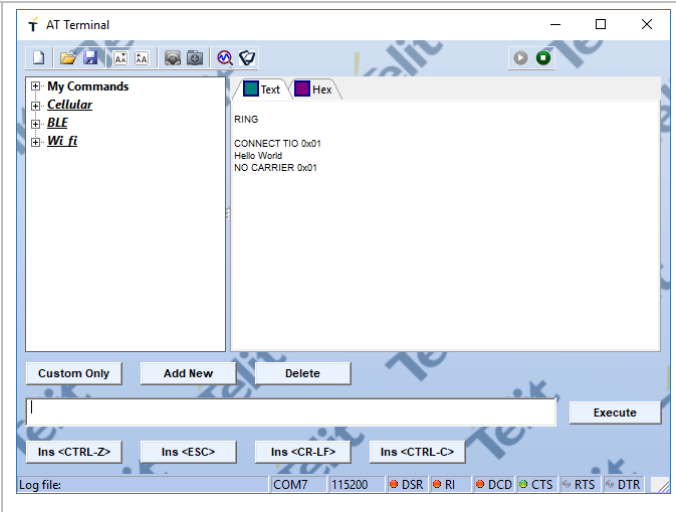
<p>Check if your BlueEva+S50/Central device (BM+S50 xxx) is found and press the “Connect” button to establish the connection to the BlueEva+S50/Central.</p>	<p>The screenshot shows the Telit mobile application interface. At the top, there is a status bar with 'No SIM', signal strength, Wi-Fi, time '15:35', and battery '97%'. Below the status bar is the Telit logo and a large circular 'Scan' button. Underneath, there is a list of discovered devices. The first device is 'BM+S42 6AA' with a green progress bar and a 'Connect' button. The second device, 'BM+S50 73F', is highlighted with a red oval, and its 'Connect' button is also circled in red. The third device is 'BM+S42M/SR...' with a green progress bar and a 'Connect' button. At the bottom, there is an information icon (i) and a Bluetooth icon.</p>
<p>The first connection attempt will last some seconds. If the connection attempt succeeded the device status is changed to “connected”.</p>	<p>This screenshot shows the same Telit mobile application interface as the previous one. The status bar and Telit logo are identical. The 'Scan' button is still present. In the list of devices, the 'BM+S50 73F' device now has a blue progress bar and the status 'connected' next to it. The 'Connect' button has been replaced by a 'Disconnect' button. This entire row is circled in red. The other devices and the bottom navigation bar remain the same.</p>

<p>The BlueEva+S50/Central is sending a RING message followed by a CONNECT TIO 0x01 message at the serial port.</p>	<p>The screenshot shows the AT Terminal interface. On the left, under 'My Commands', there are three entries: 'Cellular', 'BLE', and 'WiFi'. The main window displays the received messages: 'RING' followed by 'CONNECT TIO 0x01'. The status bar at the bottom shows 'Log file: COM7 115200' and various hardware control icons like DSR, RI, DCD, CTS, RTS, and DTR.</p>
<p>For transmitting data to the BlueEva+S50/Central click on the icon at the bottom of the page.</p>	<p>The screenshot shows a mobile application interface. At the top, it displays 'No SIM', signal strength, time '15:35', and battery level '97%'. The main screen features a large 'Scan' button. Below it, there is a list of connected devices: 'BM+S42 6AA' with a 'Connect' button, 'BM+S50 73F' with 'connected' status and a 'Disconnect' button, and 'BM+S42M/SR...' with a 'Connect' button. At the bottom, there is a dock with an information icon and a red circle highlighting a specific icon.</p>

<p>Enter data in the corresponding field and press the “Send” button.</p>	
<p>The BlueEva+S50/Central is receiving the sent data.</p> <p>To send data from the BlueEva+S50/Central to the iPhone just enter the data in the terminal emulation program (data are not echoed in the example).</p>	

<p>The “Terminal IO Utility” app on the iPhone is receiving the data.</p>	
<p>To terminate the connection, press the “Disconnect” button.</p>	

After the connection is terminated the BlueEva+S50/Central is sending a NO CARRIER 0x01 message.



5.3. NFC Handover

This chapter shows how to simplify the Bluetooth pairing via NFC by using the BlueEva+S50/Central and the NFC Utility app for NFC enabled Android devices.

Requirements regarding the smartphone:

- Android 4.1 or higher
- NFC supported
- Bluetooth and NFC activated

5.3.1. Configure the BlueEva+S50/Central for NFC Handover

To use the NFC functionality, connect the NFC board to the BlueEva+S50/Central board as follows:

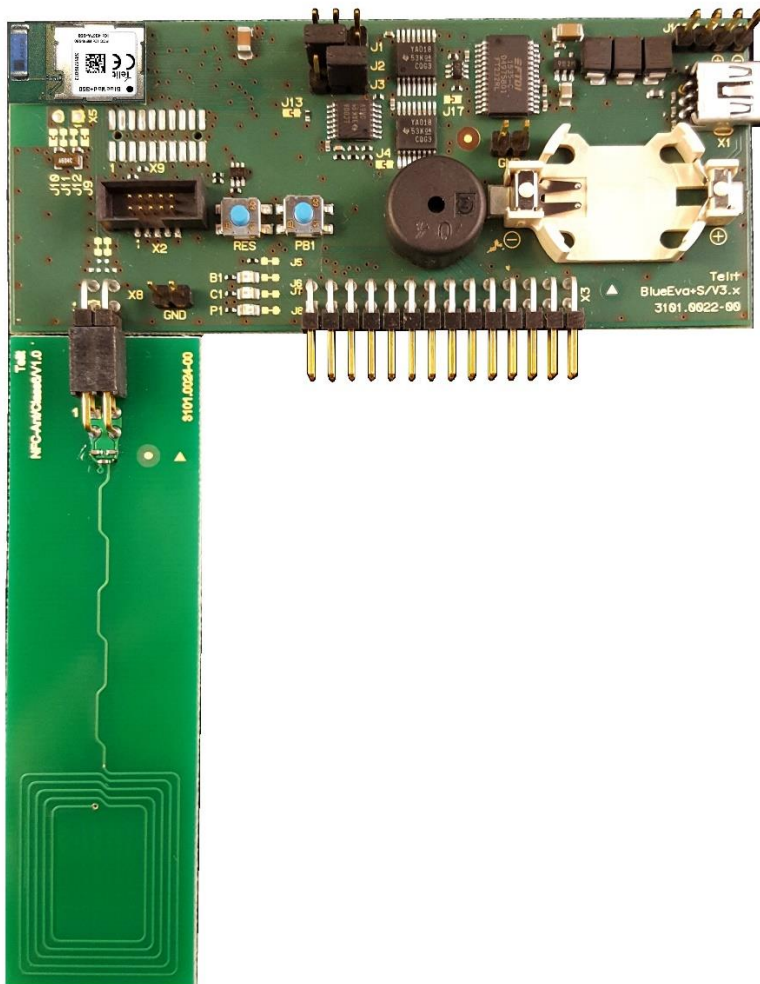


Figure 10: BlueEva+S50/Central with connected NFC board

Then connect the BlueEva+S50/Central to a free USB port on your PC and open the Telit AT Controller, press the “Connect” button and start the AT Terminal. The serial port settings are the same as described in chapter 4.2.

Enable the NFC Handover functionality by using the following AT command:

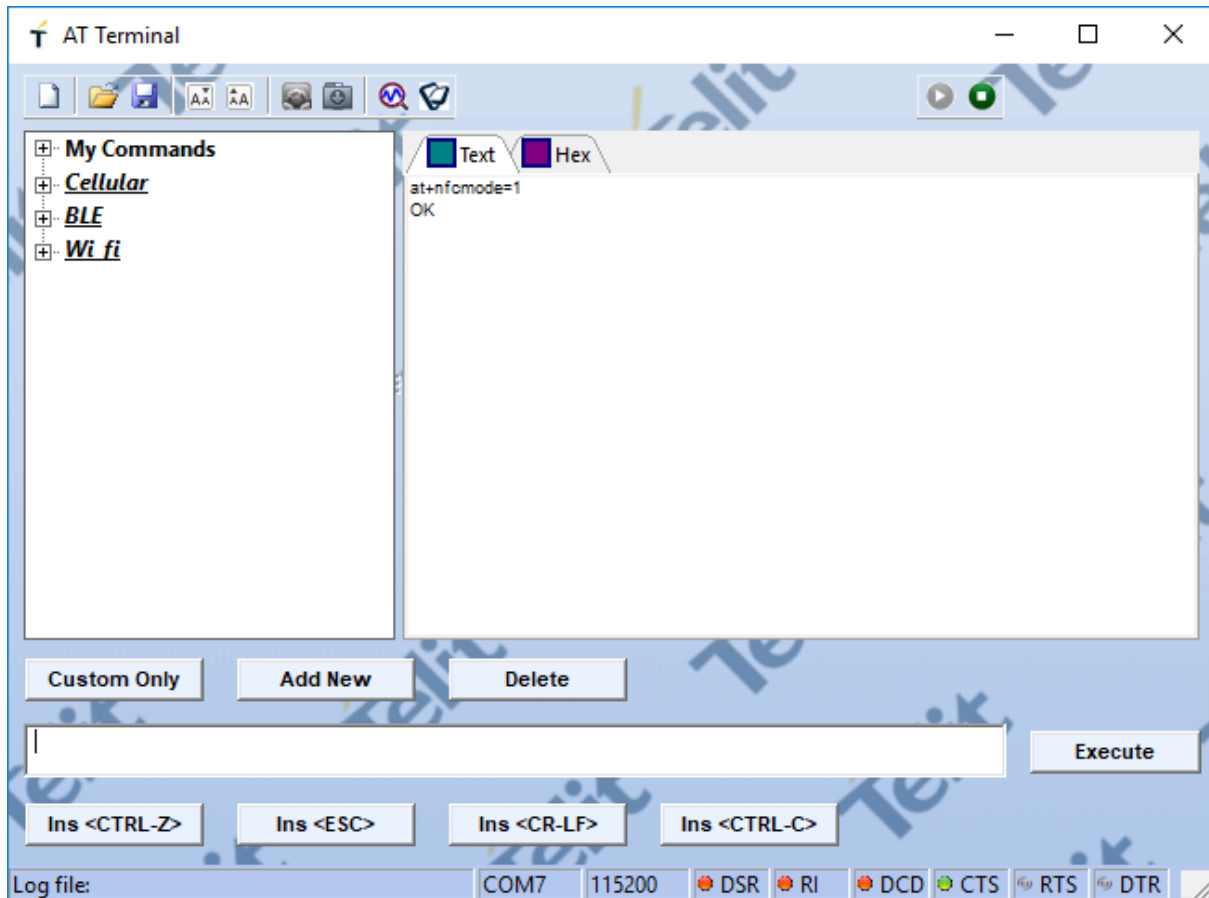
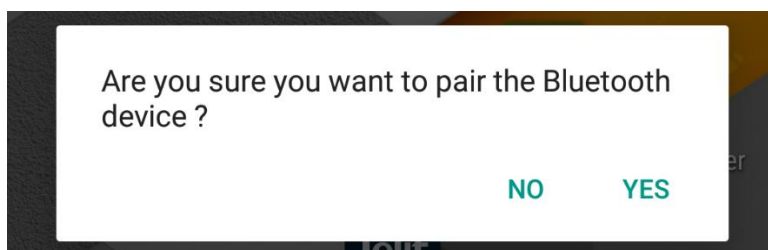


Figure 11: Enable NFC Handover

5.3.2. Example to Demonstrate the NFC Handover

Move the smartphone over the NFC board.

The Bluetooth address will be read out from the tag and the smartphone initiates a Bluetooth pairing request to the device of the given Bluetooth address and a Bluetooth pairing request message will appear. Now continue with “Pair” or “Yes” to accept the Bluetooth pairing request scenario.



After the pairing request ended successfully you will find the new paired device within the Bluetooth settings of your smartphone.

6. FIRMWARE UPDATE

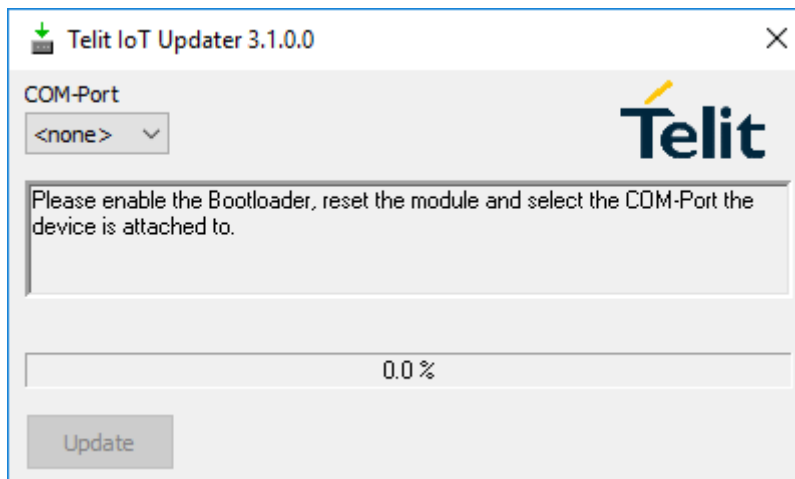
The firmware of the BlueEva+S50/Central can be updated via the local UART interface by using the Telit IoT Updater tool or over the air.

6.1. Telit IoT Updater

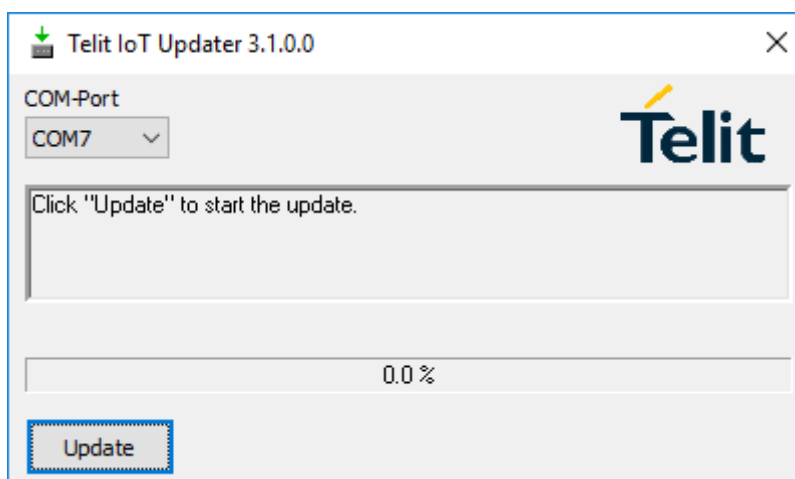
The Telit IoT Updater is a Windows™ program that contains the firmware and uses a PC with a serial port for the update. The file name of the executable program consists of version and patch information.

Please follow the instructions below for updating the firmware:

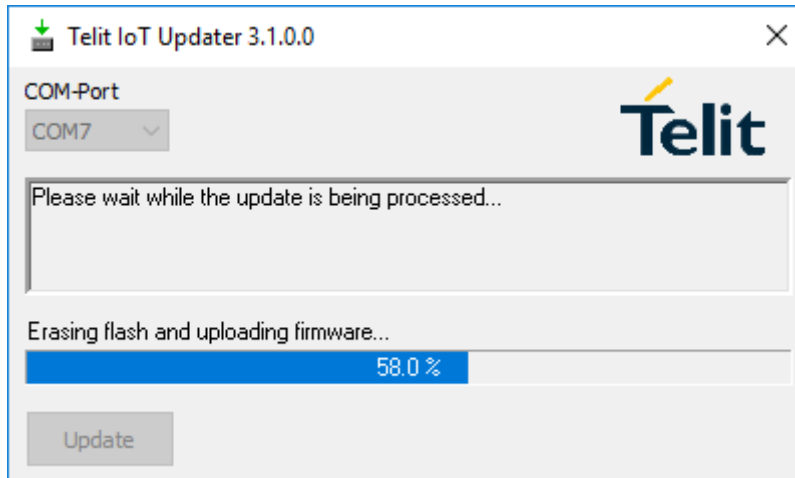
- Configure jumper J2 to position 2-3 to activate the bootloader at start-up.
- Connect the BlueEva+S50/Central to the USB port of a PC (make sure the FTDI VCP USB to UART driver is already installed).
- Start the BM+S50_xxx_FWupdate.exe program.



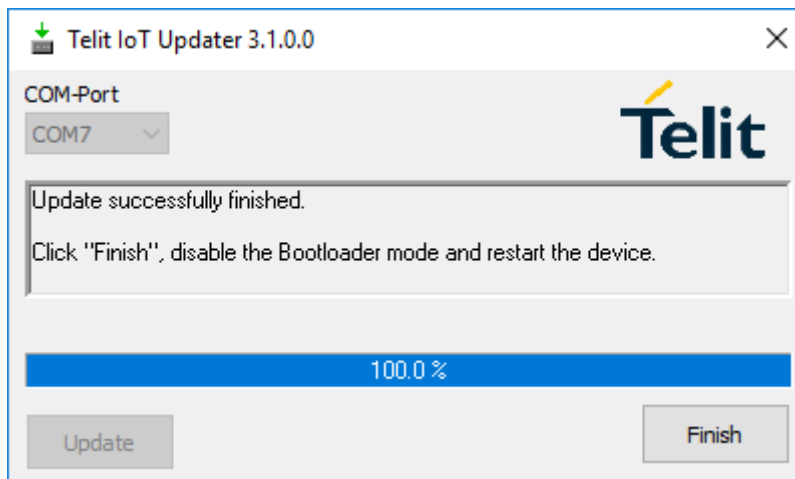
- Select the COM port the BlueEva+S50/Central is connected to and press the “Update” button.



- The firmware will be uploaded.



- After the update is completed click the “Finish” button.



- To set back the BlueEva+S50/Central into normal operation mode, move jumper J2 to position 1-2 again and perform a reset.
- Send the AT&F command to set the factory default values.



Do not disconnect the device while the update is in progress, otherwise the update will fail and has to be repeated. In case it is not possible to update the module please contact the Telit support (<mailto:ts-srd@telit.com>).

6.2. Firmware Update Over the Air (OTA)

The BlueEva+S50/Central supports firmware update over the air. The firmware update over the air can be performed by using the Nordic nRF Toolbox app available for iOS and Android or by using the Nordic Master Control Panel and the corresponding Nordic Bluetooth hardware.

The firmware over the air update will be enabled with the commands below:

- AT+DFUMODE=2
- AT+DFUSTART

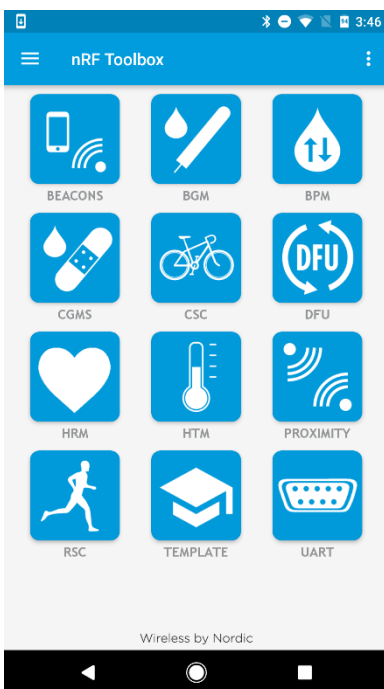
After sending the AT+DFUSTART command the BlueEva+S50/Central is visible in the air as “BM+S_DFU” (name configured with command AT+DFUNAME) for a time period of 2 minutes. If no firmware update is performed during this time the BlueEva+S50/Central will continue with normal operation.

The following chapter describes the firmware over the air update by using the Nordic nRF Toolbox app on Android.

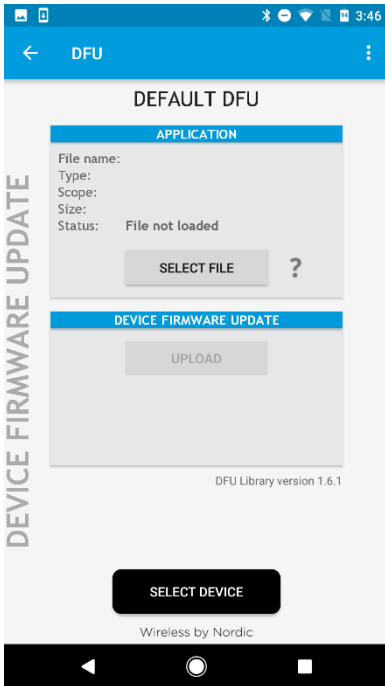
6.2.1. Firmware Update Over The Air using Nordic nRF Toolbox on Android

Make sure the BlueEva+S50/Central has already activated the firmware over the air update.

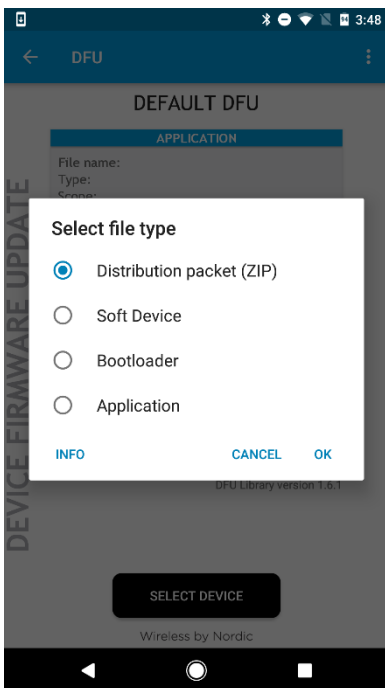
Open the nRF Toolbox app on the smartphone and choose “DFU”.



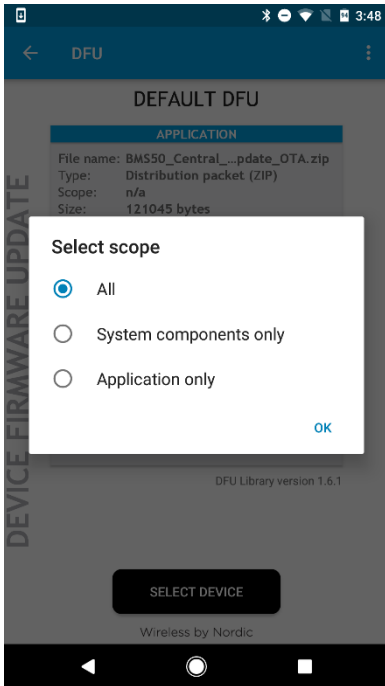
Press the button “SELECT FILE”.



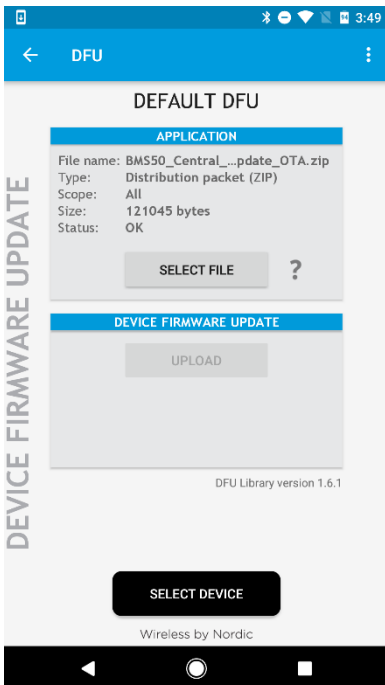
Select file type “Distribution packet (ZIP)”.



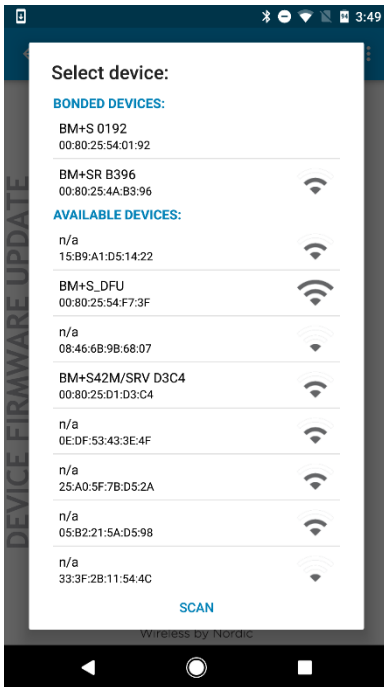
Select scope "All".



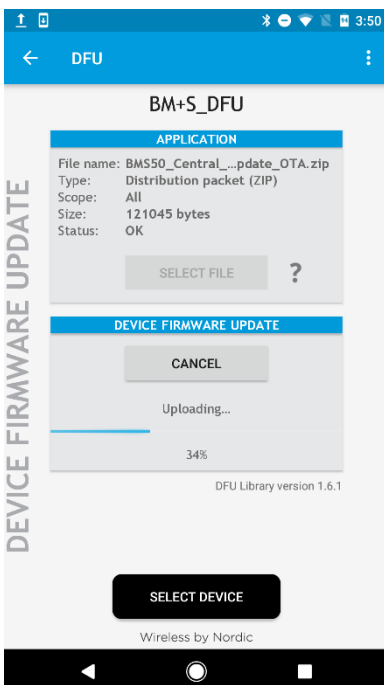
Search via file manager for the firmware package which was previously copied to the smartphone (e.g. BM+S50_Central_V5_0_0005_FWupdate_OTA.zip in the example below).



Press the button “SELECT DEVICE” and select the “BM+S_DFU” from the list of available devices.



Press the “UPLOAD” button to upload the firmware package over the air to the BlueEva+S50/Central.



After the file was uploaded successfully the BlueEva+S50/Central will start with the new firmware.

7. DOCUMENT HISTORY

Revision	Date	Changes
r0	2018-03-16	First issue



SUPPORT INQUIRIES

Link to www.telit.com and contact our technical support team for any questions related to technical issues.

www.telit.com



Telit Communications S.p.A.
Via Stazione di Prosecco, 5/B
I-34010 Sgonico (Trieste), Italy

Telit Wireless Solutions Inc.
3131 RDU Center Drive, Suite 135
Morrisville, NC 27560, USA

Telit Wireless Solutions Ltd.
10 Habarzel St.
Tel Aviv 69710, Israel

Telit IoT Platforms LLC
5300 Broken Sound Blvd, Suite 150
Boca Raton, FL 33487, USA

Telit Wireless Solutions Co., Ltd.
8th Fl., Shinyoung Securities Bld.
6, Gukjegeumyung-ro8-gil, Yeongdeungpo-gu
Seoul, 150-884, Korea

Telit Wireless Solutions
Tecnologia e Servicos Ltda
Avenida Paulista, 1776, Room 10.C
01310-921 São Paulo, Brazil

Telit reserves all rights to this document and the information contained herein. Products, names, logos and designs described herein may in whole or in part be subject to intellectual property rights. The information contained herein is provided "as is". No warranty of any kind, either express or implied, is made in relation to the accuracy, reliability, fitness for a particular purpose or content of this document. This document may be revised by Telit at any time. For most recent documents, please visit www.telit.com

Copyright © 2016, Telit