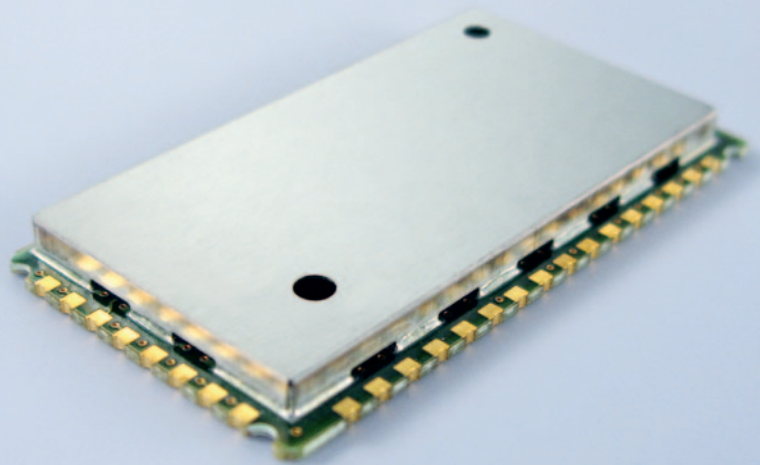



## IEEE 802.15.4


Embedded

# TinyOne™ 2400 MC RF modules

250 Kbps - 1 mW



 **RoHS and WEEE Compliant**

 **Embedded S-One Stack + Mult. Protocol Modes**

 **SMD Component**

 **Integrated Digital TTL I/Os and Analog Inputs**

 **OTA - Upgradeable and Configurable Over-the-Air**

TinyOne™ 2400MC modules are compact radio solutions based on the IEEE 802.15.4 standard at 2.4 GHz with advanced proprietary standard firmware (S-One stack) based on the TinyOne™ concept. The modules high-level of integration and flexible firmware can replace wires in many data transmission systems, even for non-RF specialists, in applications such as industrial & building automation and wireless sensor networks.

### Performance

- Range: Up to 70 m
- Output Power: 1 mW, 0 dBm
- Serial Data Rate: Up to 115.2 Kbps
- Radio Data Rate: 250 Kbps
- Sensitivity (BER < 10<sup>-3</sup>): -92 dBm

### Power Requirements

- Power Supply: 2.2 to 3.6 V ± 5%
- Board Consumption at 3.6 V:  
Rx: 30 mA  
Tx: 28 mA  
Std-by: 2 µA

### Physical Properties

- Board Format:  
Rectangular 38 x 21 mm, height 3 mm
- Temperature: -40°C to +85°C

### Networking

- Frequency: 2400 - 2483.5 MHz
- Channels: 16
- Modulation: DSSS
- Serial Interface: RS232 TTL

- |                          |     |
|--------------------------|-----|
| ■ Hayes Mode:            | Yes |
| ■ ACK Mode:              | Yes |
| ■ Addressed Mode:        | Yes |
| ■ Client / Server Mode:  | Yes |
| ■ Repeater Mode:         | No  |
| ■ Mesh Network:          | Yes |
| ■ I/O Copy:              | Yes |
| ■ Listen Before Talk:    | Yes |
| ■ Download Over-the-Air: | Yes |

### Order-No.

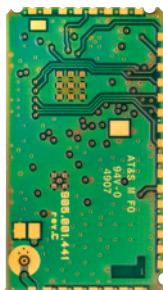
Please contact your Telit representative for order codes and further information.



# TinyOne™ 2400 MC RF modules



(a)



(a)



(a)

actual size

### Optional Features

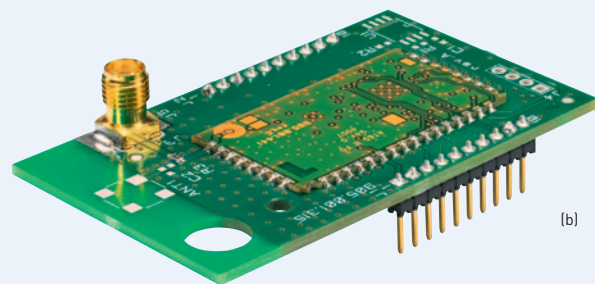
- TinyOne™ 2400 MC modules are available:
  - as an SMD board without integrated antenna
  - in DIP version
  - demo kits for development and testing

IEEE 802.15.4

Compact

## TinyOne™ 2400 MC RF modules-Interface

250 Kbps - 1 mW



(b)

### Demo Kit & Development Tools

Demo kits with development tools are available for testing and to assist with integration into the final application.

Call +33 (0)4 97 21 33 10 to order your demo kit



(c)

Copyright © 2010, Telit Communications S.p.A.  
Subject to changes in technology, design and availability  
© Anne AKTAN - Fotolia.com

Distributed by:



Telit Communications S.p.A.  
Via Stazione di Prosecco, 5/B  
I-34010 Sgonico (Trieste), Italy  
Tel +39 040 4192 200  
Fax +39 040 4192 289  
E-Mail: EMEA@telit.com  
www.telit.com

Telit Wireless Solutions Inc.  
3131 RDU Center Drive, Suite 135  
Morrisville, NC 27560, USA  
Tel +1 888 846 9773 or +1 919 439 7977  
Fax +1 888 846 9774 or +1 919 840 0337  
E-Mail: NORTHAMERICA@telit.com  
www.telit.com

Telit Wireless Solutions Inc.  
Rua Cunha Gago, 700 - cj 81, Pinheiros  
São Paulo - SP, 05421001, Brazil  
Tel +55 11 2679 4654  
Fax +55 11 2679 4654  
E-Mail: LATINAMERICA@telit.com  
www.telit.com

Telit Wireless Solutions Co., Ltd.  
9th Fl., Daewoo Securities Bld.  
34-3 Yeouido-dong, Yeongdeungpo-gu  
Seoul 150-716, KOREA  
Tel +82 2 368 4600  
Fax +82 2 368 4606  
E-Mail: APAC@telit.com  
www.telit.com

