

1vv0300980 Rev.4 - 2013-03-18



APPLICABILITY TABLE

PRODUCT
UC864 Family
CC864 Family
DE910 Family
CE910-DUAL
HE920

SW Version
U8.00.04



SPECIFICATIONS SUBJECT TO CHANGE WITHOUT NOTICE

Notice

While reasonable efforts have been made to assure the accuracy of this document, Telit assumes no liability resulting from any inaccuracies or omissions in this document, or from use of the information obtained herein. The information in this document has been carefully checked and is believed to be entirely reliable. However, no responsibility is assumed for inaccuracies or omissions. Telit reserves the right to make changes to any products described herein and reserves the right to revise this document and to make changes from time to time in content hereof with no obligation to notify any person of revisions or changes. Telit does not assume any liability arising out of the application or use of any product, software, or circuit described herein; neither does it convey license under its patent rights or the rights of others.

It is possible that this publication may contain references to, or information about Telit products (machines and programs), programming, or services that are not announced in your country. Such references or information must not be construed to mean that Telit intends to announce such Telit products, programming, or services in your country.

Copyrights

This instruction manual and the Telit products described in this instruction manual may be, include or describe copyrighted Telit material, such as computer programs stored in semiconductor memories or other media. Laws in the Italy and other countries preserve for Telit and its licensors certain exclusive rights for copyrighted material, including the exclusive right to copy, reproduce in any form, distribute and make derivative works of the copyrighted material. Accordingly, any copyrighted material of Telit and its licensors contained herein or in the Telit products described in this instruction manual may not be copied, reproduced, distributed, merged or modified in any manner without the express written permission of Telit. Furthermore, the purchase of Telit products shall not be deemed to grant either directly or by implication, estoppel, or otherwise, any license under the copyrights, patents or patent applications of Telit, as arises by operation of law in the sale of a product.

Computer Software Copyrights

The Telit and 3rd Party supplied Software (SW) products described in this instruction manual may include copyrighted Telit and other 3rd Party supplied computer programs stored in semiconductor memories or other media. Laws in the Italy and other countries preserve for Telit and other 3rd Party supplied SW certain exclusive rights for copyrighted computer programs, including the exclusive right to copy or reproduce in any form the copyrighted computer program. Accordingly, any copyrighted Telit or other 3rd Party supplied SW computer programs contained in the Telit products described in this instruction manual may not be copied (reverse engineered) or reproduced in any manner without the express written permission of Telit or the 3rd Party SW supplier. Furthermore, the purchase of Telit products shall not be deemed to grant either directly or by implication, estoppel, or otherwise, any license under the copyrights, patents or patent applications of Telit or other 3rd Party supplied SW, except for the normal non-exclusive, royalty free license to use that arises by operation of law in the sale of a product.



License Agreements

License Agreements

The software described in this document is the property of Telit and its licensors. It is furnished by express license agreement only and may be used only in accordance with the terms of such an agreement.

Copyrighted Materials

Software and documentation are copyrighted materials. Making unauthorized copies is prohibited by law. No part of the software or documentation may be reproduced, transmitted, transcribed, stored in a retrieval system, or translated into any language or computer language, in any form or by any means, without prior written permission of Telit

High Risk Materials

Components, units, or third-party products used in the product described herein are NOT fault-tolerant and are NOT designed, manufactured, or intended for use as on-line control equipment in the following hazardous environments requiring fail-safe controls: the operation of Nuclear Facilities, Aircraft Navigation or Aircraft Communication Systems, Air Traffic Control, Life Support, or Weapons Systems (High Risk Activities"). Telit and its supplier(s) specifically disclaim any expressed or implied warranty of fitness for such High Risk Activities.

Trademarks

TELIT and the Stylized T Logo are registered in Trademark Office. All other product or service names are the property of their respective owners.

Copyright © Telit Communications S.p.A. 2013.



Reproduction forbidden without written authorization from Telit Communications S.p.A.- All Rights Reserved.

Contents

	1. Introduction.....	6
1.1.	Scope	6
1.2.	Audience	6
1.3.	Contact Information, Support	6
1.4.	Product Overview	6
1.5.	Document Organization	7
1.6.	Text Conventions	7
	2. Requirements.....	9
	3. USB driver download and installation.....	10
3.1.	Installation.....	10
	4. Dial-Up Connection	14
4.1.	Creation of dialup connection on Telit USB Modem Port.....	14
4.2.	Connect using Dial-Up (USB mode).....	19
	5. Known limits	21
	6. Document History.....	22



1. Introduction

1.1. Scope

This document should provide information needed to install the USB drivers for Telit modules.

1.2. Audience

This User Guide is intended for users who need to install and use UC864, CC864, DE910, CE910 or HE920 Telit modem.

1.3. Contact Information, Support

For general contact, technical support, to report documentation errors and to order manuals, contact Telit Technical Support Center (TTSC) at:

TS-EMEA@telit.com
TS-NORTHAMERICA@telit.com
TS-LATINAMERICA@telit.com
TS-APAC@telit.com

Alternatively, use:

<http://www.telit.com/en/products/technical-support-center/contact.php>

For detailed information about where you can buy the Telit modules or for recommendations on accessories and components visit:

<http://www.telit.com>

To register for product news and announcements or for product questions contact Telit Technical Support Center (TTSC).

Our aim is to make this guide as helpful as possible. Keep us informed of your comments and suggestions for improvements.

Telit appreciates feedback from the users of our information.

1.4. Product Overview

UC864 modules contain a fully featured HSDPA modem and UMTS/GSM/GPRS module, compatible with the other Telit GSM/GPRS modules.



Reproduction forbidden without written authorization from Telit Communications S.p.A.- All Rights Reserved.

CC864 modules contain a fully features CDMA modem compatible with the other Telit GSM/GPRS modules.

The DE910-DUAL module is a dual band 1xEV-DO Rev. A 3G wireless module supporting downlink data rates up to 3.1 Mbps and uplink data rates up to 1.8 Mbps. It is pin-to-pin compatible with HE910 HSPA modem.

The CE910-DUAL is a dual band 1x RTT wireless module supporting up/down link data rates up to 153.6kbps. It is designed to have the same form factor of its GSM/UMTS/HSPA/EVDO counterparts of the xE910family: GE910, HE910 and DE910-DUAL.

The HE920 is a tri-band HSPA member of the Telit xE920Automotive form factor family. It is a 3.5G wireless data module offering HSPA connectivity with download speeds up to 14.4 Mbps, upload speeds up to 5.76 Mbps;

1.5. Document Organization

This manual contains the following chapters:

“Chapter 1, Introduction” provides a scope for this manual, target audience, technical contact information and text conventions.

“Chapter 2, Requirements” describes requisites for install Telit UC/CC 864 and DE/CE 910 USB driver in a PC with Windows 2000, XP, Vista and 7 OS installed.

“Chapter 3, USB Driver download and Installation” describes how to add the Telit UC/CC 864 and DE/CE 910 USB driver in a PC with Windows 2000, XP, Vista and 7 OS installed.

“Chapter 4, Dial-Up Connection” describes how to use the Telit UC/CC 864 and DE/CE 910 USB driver for start a dial-up connection.

“Chapter 5, Known limits” describes the driver known limits

1.6. Text Conventions



Danger – This information MUST be followed or catastrophic equipment failure or bodily injury may occur.



Caution or Warning – Alerts the user to important points about integrating the module, if these points are not followed, the module and end user equipment may fail or malfunction.





Tip or Information – Provides advice and suggestions that may be useful when integrating the module.

All dates are in ISO 8601 format, i.e. YYYY-MM-DD.

This section lists the paragraph and font styles used for the various types of information presented in this user guide.

Format	Content
Arial monospaced	Filesystem paths, and Windows Xp, Vista and 7 OS menu items



2. Requirements

Below there are the HW and SW requirements to install UC/CC/DE/CE or HE920 module:

- PC Windows 2000, XP, Vista, 7 or 8 OS installed,
- UC/CC 864 or DE/CE 910 module or HE920,
- UC/CC/DE/CE/HE920 USB Drivers, to get the driver please contact Telit Support:
 - EMEA: TS-EMEA@telit.com
 - NorthAmerica: TS-NorthAmerica@telit.com
 - LatinAmerica: TS-LATINAMERICA@telit.com
 - APAC: TS-APAC@telit.com



3. USB driver download and installation

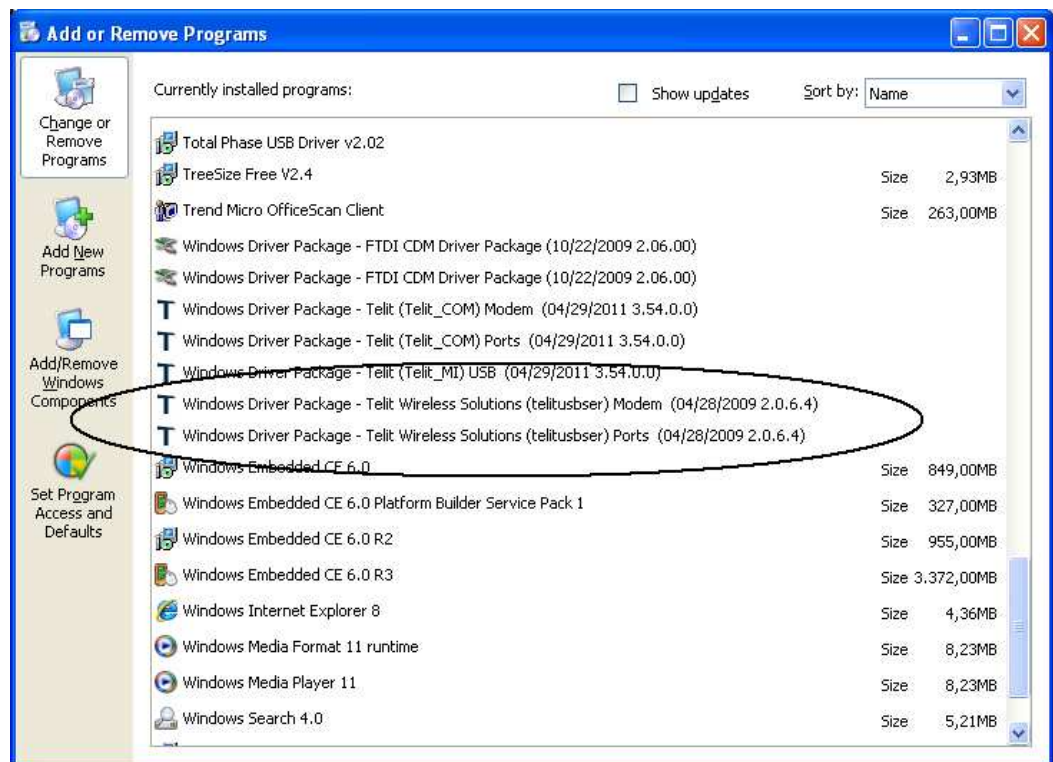
3.1. Installation

The following list of files needs to be available on the PC used for the installation procedure:

- TelitUSBInstaller_Qc_xx.xx.xx.zip (xx.xx.xx depends on the version)

To install the USB driver follow these steps:

1. Download driver archive and uncompress it in a specific directory (e.g. c:\Telit_Usb_driver) where the installer executable can be found
2. **If connected, disconnect the module from the PC. If installed, uninstall previous versions of the driver using following steps:**
 - a. **Start → ControlPanel;**
 - b. **Double click on “Add or Remove Programs”;**
 - c. **Scroll down until “Windows Driver Package – Telit (Telit_XXX)...”**



- d. **Firstly, select “Windows Driver Package – Telit Wireless Solutions (telitusbser) Modem” and press on “Change/Remove” button.**
- e. **The following window will appear, press Yes;**

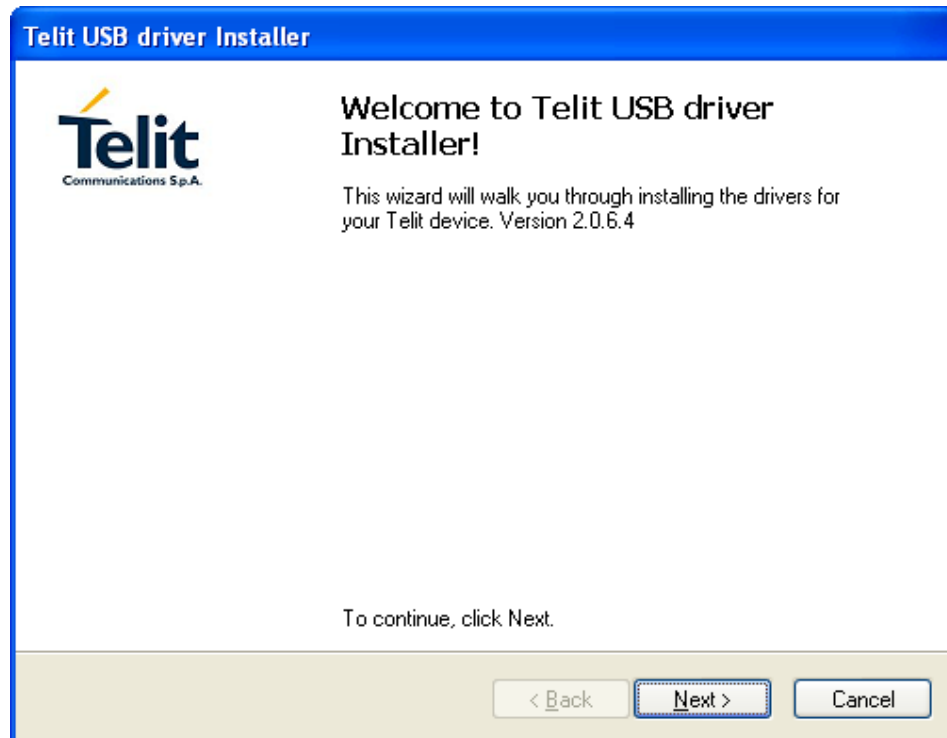


UC864/CC864/DE910/CE910/HE920 Windows 2000, Xp, Vista, 7 and 8 Driver
 1vv0300980 Rev.4 – 2013-03-18



f. Now remove the Ports driver.

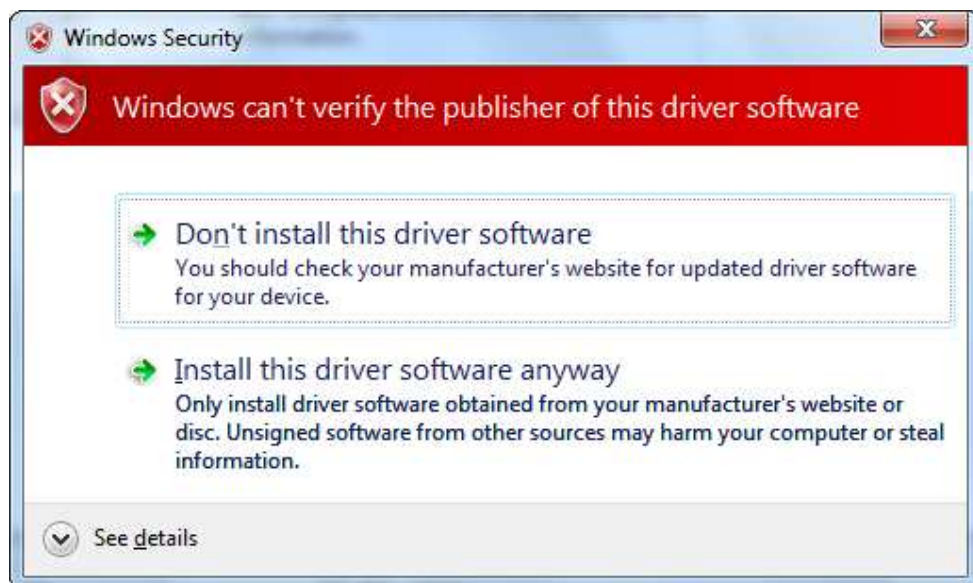
3. Run the installer and follow the instructions



If there appears one of the following windows click “Continue anyway” or “Install this driver software anyway”



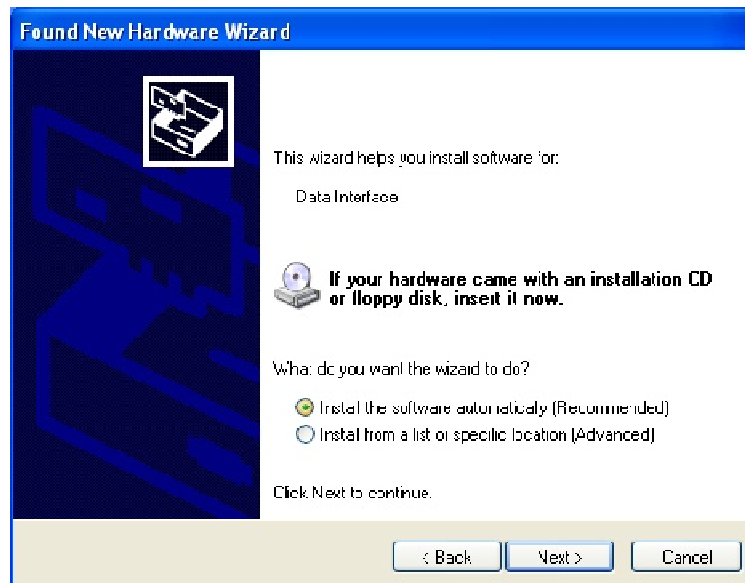
UC864/CC864/DE910/CE910/HE920 Windows 2000, Xp, Vista, 7 and 8 Driver
1vv0300980 Rev.4 – 2013-03-18



4. After finishing the installation connect the module to the PC using the USB cable: the procedure "Found new hardware wizard" will start. If requested, don't let Windows connect to Windows Update and choose "Install the software automatically (Recommended)".



UC864/CC864/DE910/CE910/HE920 Windows 2000, Xp, Vista, 7 and 8 Driver
1vv0300980 Rev.4 – 2013-03-18



At the end of the installation a modem device and 2 or 3 COM ports (depends on the module) are finally installed in the system:

- a) Telit HSDPA USB Modem
- b) Telit Auxiliary Port
- c) Telit Diagnostic Interface
- d) Telit NMEA Port



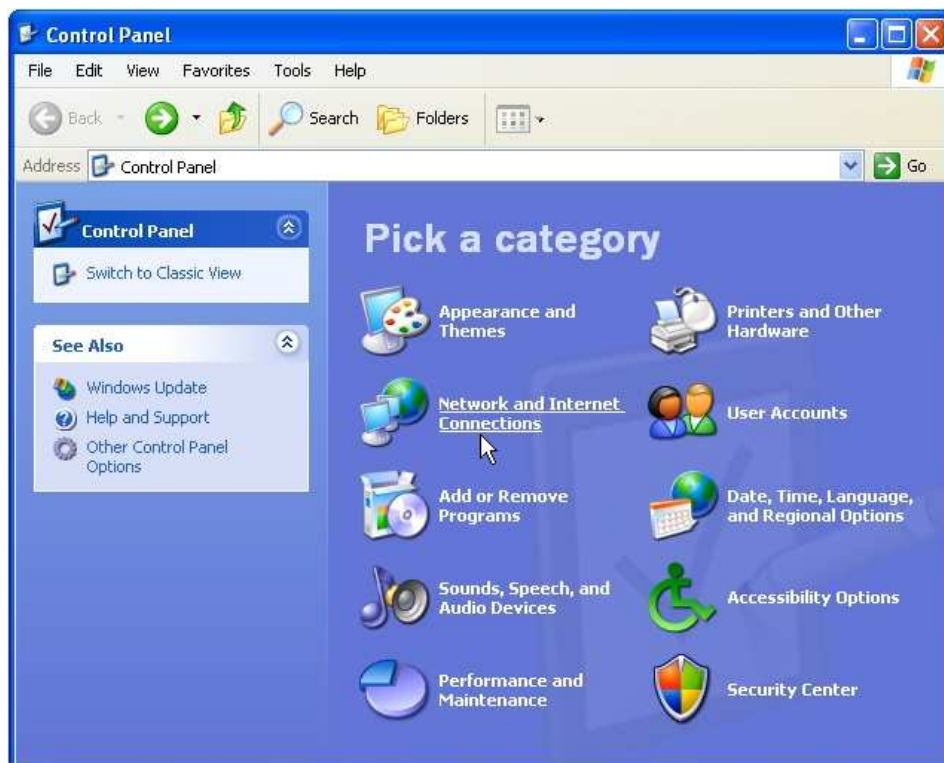
Reproduction forbidden without written authorization from Telit Communications S.p.A.- All Rights Reserved.

4. Dial-Up Connection

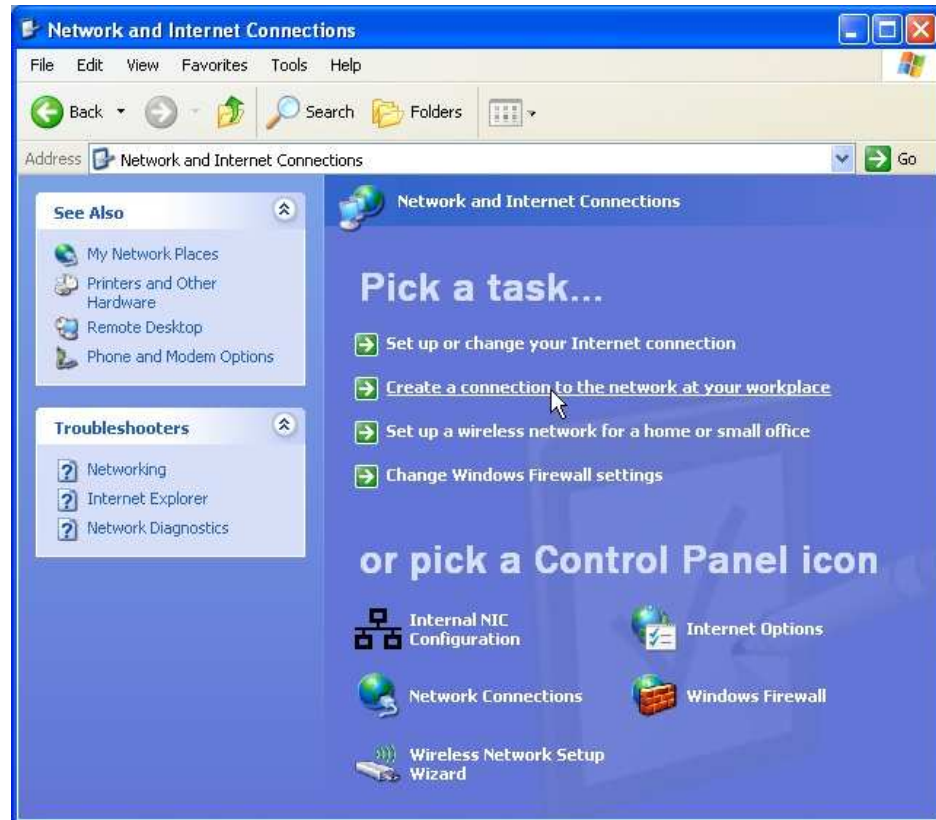
4.1. Creation of dialup connection on Telit USB Modem Port

To create a Dial-Up connection:

1. Click on Start ->Control Panel. Then click on “Network and Internet connections” as shown in the following picture.



2. Click on “Create a connection to the network at your workspace”



3. Tick “Dial-up connection” checkbox, then click “Next”.



UC864/CC864/DE910/CE910/HE920 Windows 2000, Xp, Vista, 7 and 8 Driver
1vv0300980 Rev.4 – 2013-03-18

4. Check the “Modem – Telit HSDPA USB Modem” then click “Next” checkbox. Please note that the example reported is related to the installation of one of the Telit Uc864 modules.

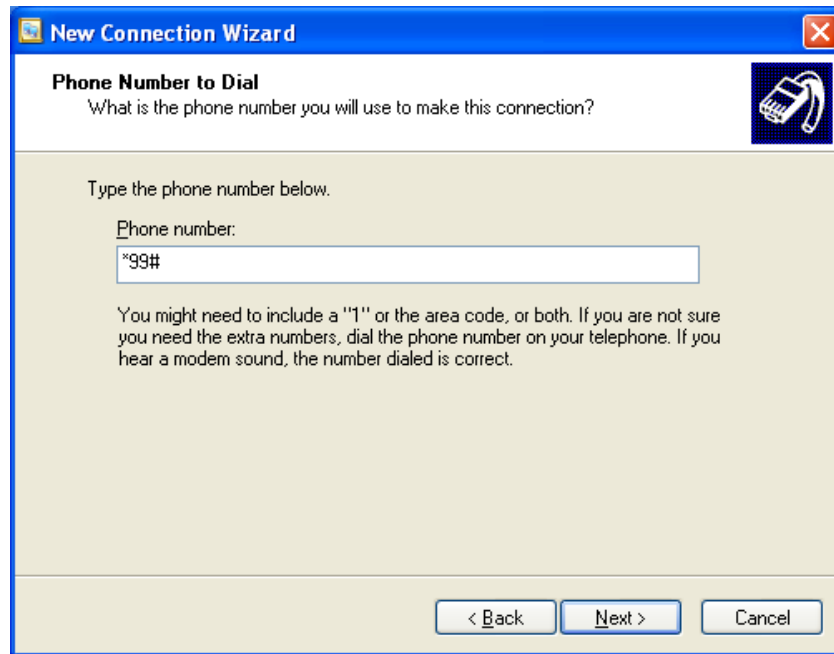


5. Type a name for the new connection then click “Next”



UC864/CC864/DE910/CE910/HE920 Windows 2000, Xp, Vista, 7 and 8 Driver
1vv0300980 Rev.4 – 2013-03-18

6. Type the phone number (“*99#” for UMTS modules or “#777” for CDMA modules) then click “Next”.



7. Tick “Do not use my smart card” radio button then click “Next”



UC864/CC864/DE910/CE910/HE920 Windows 2000, Xp, Vista, 7 and 8 Driver
1vv0300980 Rev.4 – 2013-03-18

8. Check "Add a shortcut..." checkbox then Click "Finish" to complete the procedure.



4.2. Connect using Dial-Up (USB mode)

To connect using the Dial-Up click twice on the icon in the desktop,



or click Start→Connect to→UC864 Terminal – HSDPA



Click “Dial” in “Connect UC864 Terminal” window



UC864/CC864/DE910/CE910/HE920 Windows 2000, Xp, Vista, 7 and 8 Driver
1vv0300980 Rev.4 – 2013-03-18



The windows below should appear, and after them the connection is active.



Browse the Internet to check that connection is available.



5. Known limits

Windows crashes if you connect two UC864 (two products with the same PID&VID) at the same time to two different USB hubs.

To resolve this issue you have to install the key

```
[HKEY_LOCAL_MACHINE\SYSTEM\CurrentControlSet\Control\UsbFlags]
    "IgnoreHWSerNum1BC71003"=hex:01
```

before the device installation.

With this key Windows installs new ports for each USB port where you connect a device.

In windows 7 64bit the system doesn't crash. The first device connected uses the first ports installed and the second device installs new ports.



6. Document History

Revision	Date	Changes
0	2012-01-09	First issue
1	2012-06-11	Update document for CE910
2	2012-12-06	Update installer version to U8.00.03
3	2013-01-17	Added CDMA #777 dial up phone number
4	2013-03-18	Update installer version to U8.00.04 and added HE920 support; Added Known limits paragraph

