



Antenna Detection Application Note

80000NT10002A Rev. 9 – 2017-04-06

TELIT
TECHNICAL
DOCUMENTATION

SPECIFICATIONS ARE SUBJECT TO CHANGE WITHOUT NOTICE

NOTICE

While reasonable efforts have been made to assure the accuracy of this document, Telit assumes no liability resulting from any inaccuracies or omissions in this document, or from use of the information obtained herein. The information in this document has been carefully checked and is believed to be reliable. However, no responsibility is assumed for inaccuracies or omissions. Telit reserves the right to make changes to any products described herein and reserves the right to revise this document and to make changes from time to time in content hereof with no obligation to notify any person of revisions or changes. Telit does not assume any liability arising out of the application or use of any product, software, or circuit described herein; neither does it convey license under its patent rights or the rights of others.

It is possible that this publication may contain references to, or information about Telit products (machines and programs), programming, or services that are not announced in your country. Such references or information must not be construed to mean that Telit intends to announce such Telit products, programming, or services in your country.

COPYRIGHTS

This instruction manual and the Telit products described in this instruction manual may be, include or describe copyrighted Telit material, such as computer programs stored in semiconductor memories or other media. Laws in the Italy and other countries preserve for Telit and its licensors certain exclusive rights for copyrighted material, including the exclusive right to copy, reproduce in any form, distribute and make derivative works of the copyrighted material. Accordingly, any copyrighted material of Telit and its licensors contained herein or in the Telit products described in this instruction manual may not be copied, reproduced, distributed, merged or modified in any manner without the express written permission of Telit. Furthermore, the purchase of Telit products shall not be deemed to grant either directly or by implication, estoppel, or otherwise, any license under the copyrights, patents or patent applications of Telit, as arises by operation of law in the sale of a product.

COMPUTER SOFTWARE COPYRIGHTS

The Telit and 3rd Party supplied Software (SW) products described in this instruction manual may include copyrighted Telit and other 3rd Party supplied computer programs stored in semiconductor memories or other media. Laws in the Italy and other countries preserve for Telit and other 3rd Party supplied SW certain exclusive rights for copyrighted computer programs, including the exclusive right to copy or reproduce in any form the copyrighted computer program. Accordingly, any copyrighted Telit or other 3rd Party supplied SW computer programs contained in the Telit products described in this instruction manual may not be copied (reverse engineered) or reproduced in any manner without the express written permission of Telit or the 3rd Party SW supplier. Furthermore, the purchase of Telit products shall not be deemed to grant either directly or by implication, estoppel, or otherwise, any license under the copyrights, patents or patent applications of Telit or other 3rd Party supplied SW, except for the normal non-exclusive, royalty free license to use that arises by operation of law in the sale of a product.

USAGE AND DISCLOSURE RESTRICTIONS

I. License Agreements

The software described in this document is the property of Telit and its licensors. It is furnished by express license agreement only and may be used only in accordance with the terms of such an agreement.

II. Copyrighted Materials

Software and documentation are copyrighted materials. Making unauthorized copies is prohibited by law. No part of the software or documentation may be reproduced, transmitted, transcribed, stored in a retrieval system, or translated into any language or computer language, in any form or by any means, without prior written permission of Telit

III. High Risk Materials

Components, units, or third-party products used in the product described herein are NOT fault-tolerant and are NOT designed, manufactured, or intended for use as on-line control equipment in the following hazardous environments requiring fail-safe controls: the operation of Nuclear Facilities, Aircraft Navigation or Aircraft Communication Systems, Air Traffic Control, Life Support, or Weapons Systems (High Risk Activities"). Telit and its supplier(s) specifically disclaim any expressed or implied warranty of fitness for such High Risk Activities.

IV. Trademarks

TELIT and the Stylized T Logo are registered in Trademark Office. All other product or service names are the property of their respective owners.

V. Third Party Rights

The software may include Third Party Right software. In this case you agree to comply with all terms and conditions imposed on you in respect of such separate software. In addition to Third Party Terms, the disclaimer of warranty and limitation of liability provisions in this License shall apply to the Third Party Right software.

TELIT HEREBY DISCLAIMS ANY AND ALL WARRANTIES EXPRESS OR IMPLIED FROM ANY THIRD PARTIES REGARDING ANY SEPARATE FILES, ANY THIRD PARTY MATERIALS INCLUDED IN THE SOFTWARE, ANY THIRD PARTY MATERIALS FROM WHICH THE SOFTWARE IS DERIVED (COLLECTIVELY "OTHER CODE"), AND THE USE OF ANY OR ALL THE OTHER CODE IN CONNECTION WITH THE SOFTWARE, INCLUDING (WITHOUT LIMITATION) ANY WARRANTIES OF SATISFACTORY QUALITY OR FITNESS FOR A PARTICULAR PURPOSE.

NO THIRD PARTY LICENSORS OF OTHER CODE SHALL HAVE ANY LIABILITY FOR ANY DIRECT, INDIRECT, INCIDENTAL, SPECIAL, EXEMPLARY, OR CONSEQUENTIAL DAMAGES (INCLUDING WITHOUT LIMITATION LOST PROFITS), HOWEVER CAUSED AND WHETHER MADE UNDER CONTRACT, TORT OR OTHER LEGAL THEORY, ARISING IN ANY WAY OUT OF THE USE OR DISTRIBUTION OF THE OTHER CODE OR THE EXERCISE OF ANY RIGHTS GRANTED UNDER EITHER OR BOTH THIS LICENSE AND THE LEGAL TERMS APPLICABLE TO ANY SEPARATE FILES, EVEN IF ADVISED OF THE POSSIBILITY OF SUCH DAMAGES.

APPLICABILITY TABLE

PRODUCTS

	SW Versions
GC FAMILY (COMPACT)	
■ ■ GC864-QUAD	
■ ■ GC864-QUAD V2	10.00.xx7
■ ■ GC864-DUAL V2	
GE/GL FAMILY (EMBEDDED)	
■ ■ GE864-QUAD	
■ ■ GE864-QUAD V2	
■ ■ GE864-QUAD Automotive V2	
■ ■ GE864-QUAD ATEX	10.00.xx7
■ ■ GE864-DUAL V2	
■ ■ GE864-GPS	
■ ■ GE865-QUAD	
■ ■ GL865-DUAL	10.00.xx4
■ ■ GL865-QUAD	
■ ■ GL868-DUAL	
■ ■ GE910-QUAD	13.00.xx3
■ ■ GE910-GNSS	13.00.xx4
■ ■ GL865-DUAL V3	
■ ■ GL868-DUAL V3	16.00.xx2
■ ■ GE910-QUAD V3	
HE910 Family	
■ ■ HE910 ¹	
■ ■ HE910-GL	
■ ■ HE910-D	
■ ■ HE910-EUR / HE910-EUD	12.00.xx3
■ ■ HE910-EUG / HE910-NAG	
■ ■ UE910-NAR / HE910-NAD	
UE910 Family	
■ ■ UE910-EUR / UE910-EUD	
■ ■ UE910-NAR / UE910-NAD	12.00.xx4
■ ■ UE910-N3G	

GT Family (Terminal)	
■ ■	GT863-PY
■ ■	GT864-QUAD 10.00.xx2
■ ■	GT864-PY
LE910 Family	
■ ■	LE910-EUG 17.00.xx1
■ ■	LE910-NAG
■ ■	LE910C1-AP
■ ■	LE910C1-NA 25.00.xx1
■ ■	LE910C1-NS
LE920 Family	
■ ■	LE920-EU Auto 17.00.xx1
■ ■	LE920-NA Auto
■ ■	LE920A4-EU Auto
■ ■	LE920A4-NA Auto 25.00.xx1
■ ■	LE920A4-CN Auto
■ ■	LE920C4-CN

Note: the features described in the present document are provided by the products equipped with the software versions equal or higher than the versions shown in the table.

¹ HE910 is the “type name” of the products marketed as HE910-G & HE910-DG.

CONTENTS

NOTICE	2
COPYRIGHTS	2
COMPUTER SOFTWARE COPYRIGHTS	2
USAGE AND DISCLOSURE RESTRICTIONS	3
I.	License Agreements	3
II.	Copyrighted Materials	3
III.	High Risk Materials	3
IV.	Trademarks	3
V.	Third Party Rights	3
APPLICABILITY TABLE	4
CONTENTS	6
1. INTRODUCTION	7
1.1.	Scope	7
1.2.	Audience.....	7
1.3.	Contact Info and Support	7
1.4.	Text Conventions.....	8
1.5.	Related Documents	9
2. ANTENNA DETECTION	10
3. APPLICATION REFERENCE CIRCUITRY	11
3.1.	10KΩ DC terminated antenna detection with AT#GSMAD	12
3.2.	DC grounded antenna with custom detection algorithm	14
3.3.	10KΩ DC terminated antenna with custom detection algorithm ..	15
3.4.	PCB layout recommendations.....	17
4. DETECTION LIMITS	18
4.1.	10KΩ DC terminated antenna detection with AT#GSMAD	18
4.2.	DC grounded antenna with custom detection algorithm	18
4.3.	10KΩ DC terminated antenna with custom detection algorithm ..	19
5. AT COMMAND INTERFACE AND ALGORITHMS	20
5.1.	AT Commands.....	20
5.2.	DC grounded antenna Algorithm.....	21
5.3.	10KΩ DC terminated antenna Algorithm	21
6. DOCUMENT HISTORY	24

1. INTRODUCTION

1.1. Scope

This application note outlines the limitations and boundaries of antennas detection and diagnosing, specifically in relation to the automotive environment.

1.2. Audience

This document is intended for Telit customers, who are integrators, mainly of automotive applications..

1.3. Contact Info and Support

For general contact, technical support services, technical questions and report documentation errors contact Telit Technical Support at:

- TS-EMEA@telit.com
- TS-AMERICAS@telit.com
- TS-APAC@telit.com

Alternatively, use:

<http://www.telit.com/support>

For detailed information about where you can buy the Telit modules or for recommendations on accessories and components visit:

<http://www.telit.com>

Our aim is to make this guide as helpful as possible. Keep us informed of your comments and suggestions for improvements.

Telit appreciates feedback from the users of our information.

1.4. Text Conventions



Danger – This information **MUST** be followed or catastrophic equipment failure or bodily injury may occur.



Caution or Warning – Alerts the user to important points about integrating the module, if these points are not followed, the module and end user equipment may fail or malfunction.



Tip or Information – Provides advice and suggestions that may be useful when integrating the module.

All dates are in ISO 8601 format, i.e. YYYY-MM-DD.

1.5. Related Documents

- GC864 Hardware User Guide, 1v0300733
- GE863 Family Hardware User Guide, 1v0300783
- GE864 Hardware User Guide, 1v0300694
- GE865 Hardware User Guide, 1v0300799
- GL865-DUAL V3 Hardware User Guide, 1v0301018
- HE910 Hardware User Guide, 1v0300925
- UE910 Hardware User Guide, 1v0301012
- GE910 Hardware User Guide, 1v0300962
- LE910 Hardware User Guide, 1v0301089
- LE920 Hardware User Guide, 1v0301026
- LE920A4 Hardware User Guide, 1v03011261
- LE910C1 Hardware User Guide, 1v03011298
- AT Commands Reference Guide, 80000ST10025a
- HE910 AT Commands Reference Guide, 80000ST10091a
- LE9x0 AT Commands Reference Guide 80407ST10116a

2. ANTENNA DETECTION

Being able to detect and diagnose the antenna is a valuable feature for many system integrators, and especially so for automotive applications. The ability to detect if the antenna is connected to the application is useful, for diagnosing installation or production problems as well as any tampering with the system.

Many automotive applications also have the need to detect if the antenna is shorted to ground or the battery of the vehicle for fault tracing. Basically, antenna detection is performed by means of its DC characteristics, splitting the DC and RF paths.

Two slightly different hardware solutions are here presented: the first one is suitable to be used in conjunction with the antenna detection AT command, i.e. AT#GSMAD, thus simplifying application firmware.

The second solution gives a higher flexibility degree to system integrator, permitting a better adaptation to application characteristics and behaviour. In this case the detection algorithm is implemented by customer, consisting of a short sequence of AT commands, performing actual measurements and reporting antenna status.

In addition, two different antenna cases are studied: the first one takes into account an antenna presenting zero DC impedance. The second case considers an antenna showing open circuit to DC signals, so that, in order to detect antenna presence, a 10K Ω nominal value resistor has to be embedded in parallel to antenna.

In all cases, a few simple and low cost passive components are added to the RF path and connected to module IO's.

This application note also outlines the limitations and boundaries of this feature, specifically in relation to the automotive environment. This feature can be implemented on the products containing the Antenna Detection function as noted in the "AT Commands Reference Guide".

3. APPLICATION REFERENCE CIRCUITRY

First at all it is very important to note there are some major electrical differences between different module products. Those differences are related to V_{aux} , GPIO high logic voltage levels and ADC voltage input ranges. For this reason it makes sense to divide the Applicability products in 2 groups.

Group 1 modules show GPIOs with 2V8 high logic voltage levels and an ADC input range 0÷2000mV. V_{aux} is set to 2V8.

Group 2 products GPIOs are set to 1V8 logic high and implement an ADC input range 0÷1200mV. V_{aux} is set to 1V8.

GROUP 1 Products

GC FAMILY (Compact)

- ■ GC864-QUAD
- ■ GC864-QUAD V2
- ■ GC864-DUAL V2

GE/GL FAMILY (Embedded)

- ■ GE864-QUAD
- ■ GE864-QUAD V2
- ■ GE864-QUAD Automotive V2
- ■ GE864-QUAD ATEX
- ■ GE864-DUAL V2
- ■ GE864-GPS
- ■ GE865-QUAD
- ■ GL865-DUAL
- ■ GL865-QUAD
- ■ GL868-DUAL
- ■ GE910-QUAD
- ■ GE910-GNSS
- ■ GL865-DUAL V3
- ■ GL868-DUAL V3
- ■ GE910-QUAD V3

GT Family (Terminal)

- ■ GT863-PY
- ■ GT864-QUAD
- ■ GT864-PY

GROUP 2 Products

HE910 Family

- ■ HE910¹
- ■ HE910-GL
- ■ HE910-D
- ■ HE910-EUR / HE910-EUD
- ■ HE910-EUG / HE910-NAG
- ■ UE910-NAR / HE910-NAD

UE910 Family

- ■ UE910-EUR/EUD
- ■ UE910-NAR/NAD/N3G

GE/GL FAMILY (Embedded)

- ■ GE910-QUAD
- ■ GE910-GNSS
- ■ GL865-DUAL V3
- ■ GL868-DUAL V3
- ■ GE910-QUAD V3

LE910 Family

- ■ LE910-EUG
- ■ LE910-NAG
- ■ LE910C1-AP
- ■ LE910C1-NA
- ■ LE910C1-NS

LE920 Family

- ■ LE920-EU Auto
- ■ LE920-NA Auto

GROUP 2 Products

LE920 Family

- ■ LE920A4-EU Auto
- ■ LE920A4-NA Auto
- ■ LE920A4-CN Auto
- ■ LE920C4-CN

3.1. 10KΩ DC terminated antenna detection with AT#GSMAD

The following assumes that the application is using a 10KΩ DC terminated antenna.

The figure below outlines the reference implementation, please keep in mind that these components are in the RF path and care must be taken when implementing this circuit, and refer to the “Hardware User Guide” of the actual wireless modem used for more information on this subject.

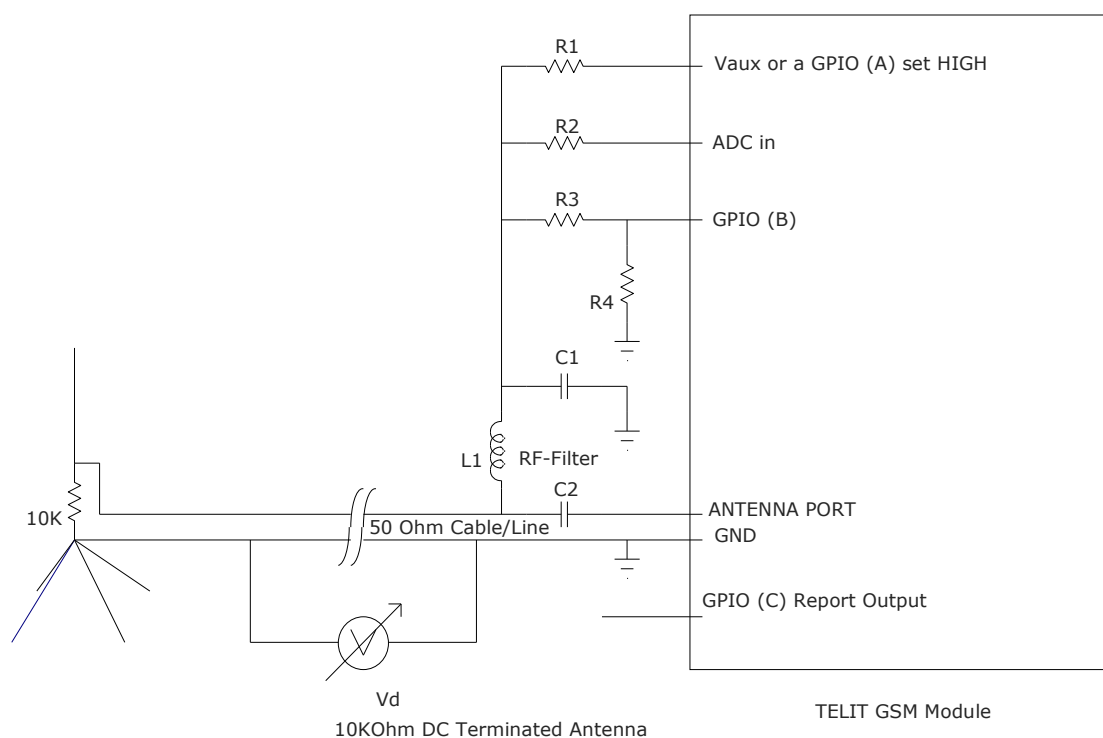


Figure 3-1 Antenna Diagnostics reference schematic for resistive termination, Solution 1

As per **Group 1** products, the V_{aux} is a 2V8 regulated power source output from the module. ADC is a 0÷2000mV 11-bit Analog to Digital Converter input.

When GPIO (A) is used as reference instead of V_{aux} (e.g. GE864-QUAD Automotive), the selected GPIO (A) must be chosen among the available ones for the product and must be set as Output HIGH with the specific GPIO AT command.

VD represents the offset voltage between antenna and module grounds. The GPIO (B) and GPIO (C) must be defined among the available ones for the product and set into the specific AT command (see **AT#GSMAD parameters <detGPIO>**, **<repGPIO>**).

This example assumes the use of the “**ADC1**” input and **GPIO13** port of the module for this purpose.

Same topology depicted on Figure 3-1 may be used on **Group 2** modules. Of course, the AT#GSMAD command implemented into this group takes into account the different V_{aux} , GPIO and ADC levels/intervals of those found in Group 1 modules, so that those differences are totally transparent to final user.

Recommended component values for Figure 3-1 circuit are the same for both Group 1 and 2 products and are defined in Table 3-1.

COMPONENT	VALUE	RECOMMENDED PACKAGE
R1=R2	15 K Ω	
R3	15 K Ω	
R4	5.6 K Ω	
L1	47 nH	0402 or 0603
C1	33 pF 50V	0402 or 0603
C2	33 pF 50V	0402 or 0603

Table 3-1 recommended component values for Figure 3.1 circuit

3.2. DC grounded antenna with custom detection algorithm

Some antennas show zero ohm impedance to DC. In such cases, two different DC conditions are detectable, only: SHORT = antenna is present and OPEN = antenna is missing.

The circuit solution on Figure 3-1 and the AT#GSMAD may still be used, keeping in mind that an answer “SHORT” means “Antenna is present”.

A second topology is here presented, slightly simpler than the first one. It uses less module hardware resources and it gives the possibility to the user to customize the detection algorithm. Figure 3-2 depicts the proposed circuit, please keep in mind that these components are in the RF path and care must be taken when implementing this circuit, and refer to the “Hardware User Guide” of the actual wireless modem used for more information on this subject.

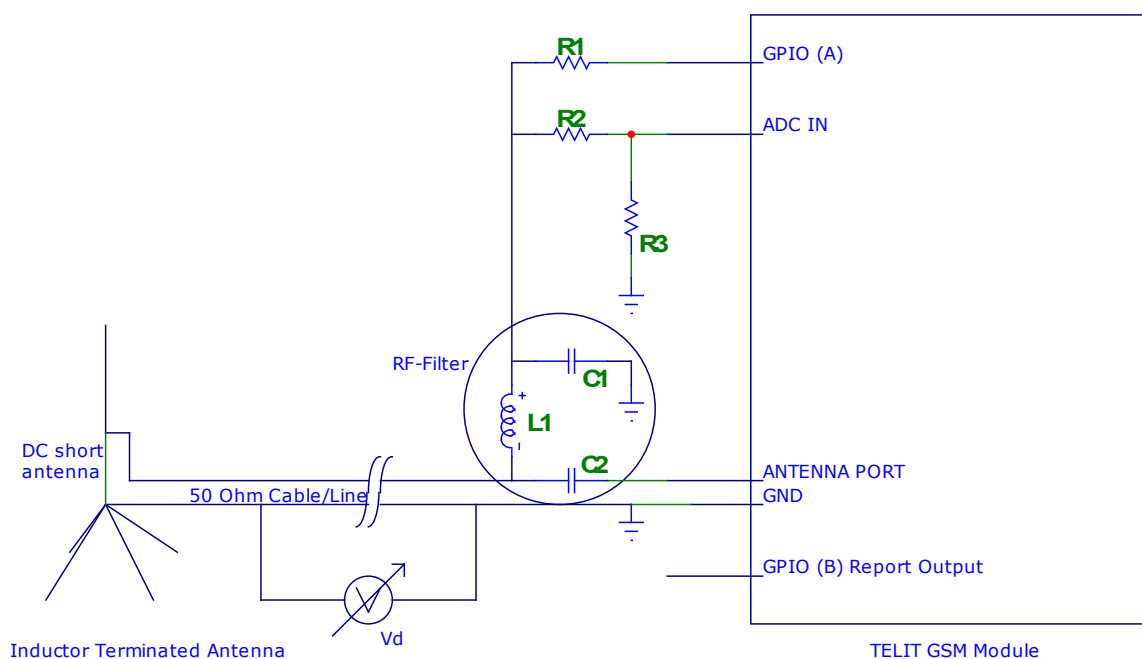


Figure 3-2 Antenna Diagnostics reference schematic for DC grounded configuration

GPIO (A) and GPIO (B) must be chosen among the available General Purpose IO's. Their high level value is 2V8 (1V8) for **Group 1 (Group 2)** products. Vd represents the offset voltage between antenna and module grounds. Antenna presence is detected by setting GPIO (A) to output high. Voltage level at ADC IN will indicate the antenna status:

- a) If ADC IN next to **0V** → antenna is PRESENT
- b) If ADC IN next to **1V8 (1V2)** → an OPEN condition is reported, antenna is missing.

AD converter saturates at 2V (1V2): for this reason the (R2, R3) voltage divider is provided. GPIO (B) is set as output, reporting an antenna good or fault condition.

For components values please refer to Table 3-2 in chapter 3.3.

A reference algorithm for antenna detection may be found in chapter 5.2.

3.3. 10KΩ DC terminated antenna with custom detection algorithm

Figure 3-3 represents an alternative solution to circuit in Figure 3-1. Here we assume the application uses a 10KΩ DC terminated antenna.

Please keep in mind that these components are in the RF path and care must be taken when implementing this circuit, and refer to the “Hardware User Guide” of the actual wireless modem used for more information on this subject.

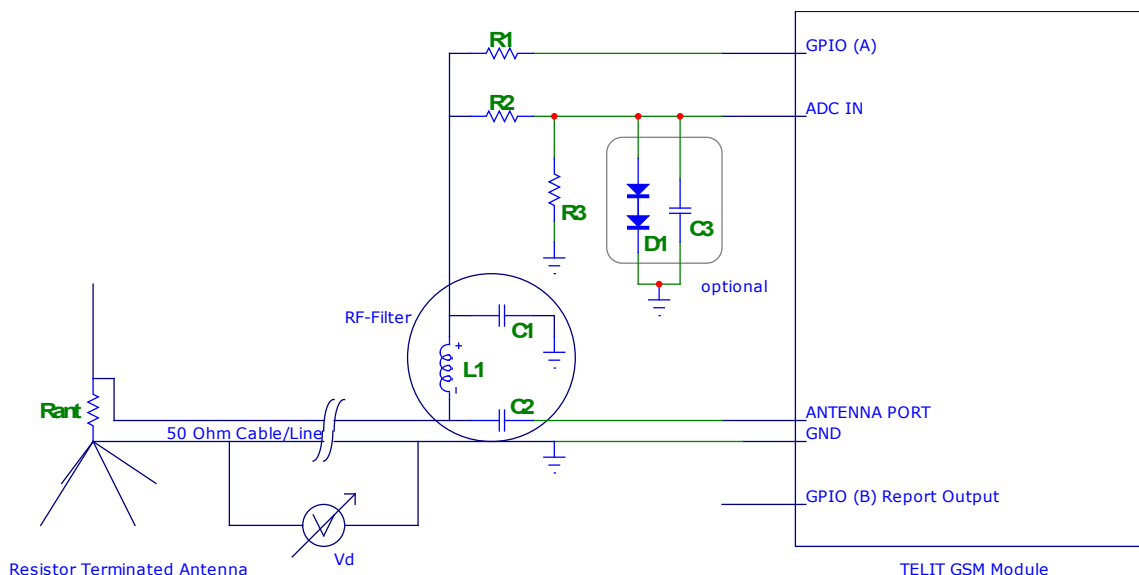


Figure 3-3 Antenna Diagnostics reference schematic for resistive termination

GPIO (A) and GPIO (B) must be chosen among the available General Purpose IO's. Their high level value is 2V8 and 1V8, Group 1 products and Group 2, respectively. Vd represents the offset voltage between antenna and module grounds. In the antenna detection procedure, GPIO (A) will be first set to output low, in order to detect by means of ADC IN if the antenna terminal is in contact with an external voltage source. If no such issue is detected, GPIO (A) will next be set high, in order to supply the (R1, R_{ant}) voltage divider. Voltage level at ADC IN will indicate the antenna status:

- a) If ADC IN is approximately 815mV (Group 1) or 525mV (Group 2) → antenna is PRESENT
- b) If ADC IN next to 0V → antenna is SHORTED
- c) If ADC IN next to 2V (Group 1) or 1V2 (Group 2) → an OPEN condition is reported, antenna is missing.

AD converter saturates at 2V (Group 1) or 1V2 (Group 2); for this reason the (R2, R3) voltage divider is provided. Please note that the double diode D1 and the capacitor C3 are optional: they are not required if the external voltage source, which could accidentally contact the antenna, is not greater than 3V5 (Group 1) or 2V3 (Group 2). In case of greater voltage levels (e.g. car battery voltage), those 2 diodes and capacitor are mandatory for ADC IN overvoltage protection.

GPIO (B) is set as output, reporting good or fault antenna condition.

A reference algorithm for antenna detection may be found in chapter 5.3.

Component values for both cases described in 3.2 and 3.3 for both Groups 1 and 2 are defined in table 3-2.

COMPONENT	VALUE	RECOMMENDED PACKAGE
R1=R2	15 K Ω	
R3	56 K Ω	
L1	47 nH	0402 or 0603
C1=C2	33 pF 50V	0402 or 0603
Optional:		
D1	BAV99W or equivalent	
C3	10 nF 10V	0402 or 0603

Table 3-2 recommended component values for Figures 3.2 and 3.3 circuits

3.4. PCB layout recommendations

The C1-L1-C2 RF-Filter has to be compact and near the transmission line; particularly: the capacitor C2 has to be along the antenna transmission line, the inductor L1 has to be very close to transmission line, the capacitor C1 has to be next to L1. See example below.

This RF-filter is a network that decouples the DC from RF-signal (Bias-Tee): C2 let flow the RF signal between M2M module and the antenna, L1 picks just the DC voltage up and C1 further blocks RF to get into the remainder of the circuitry.

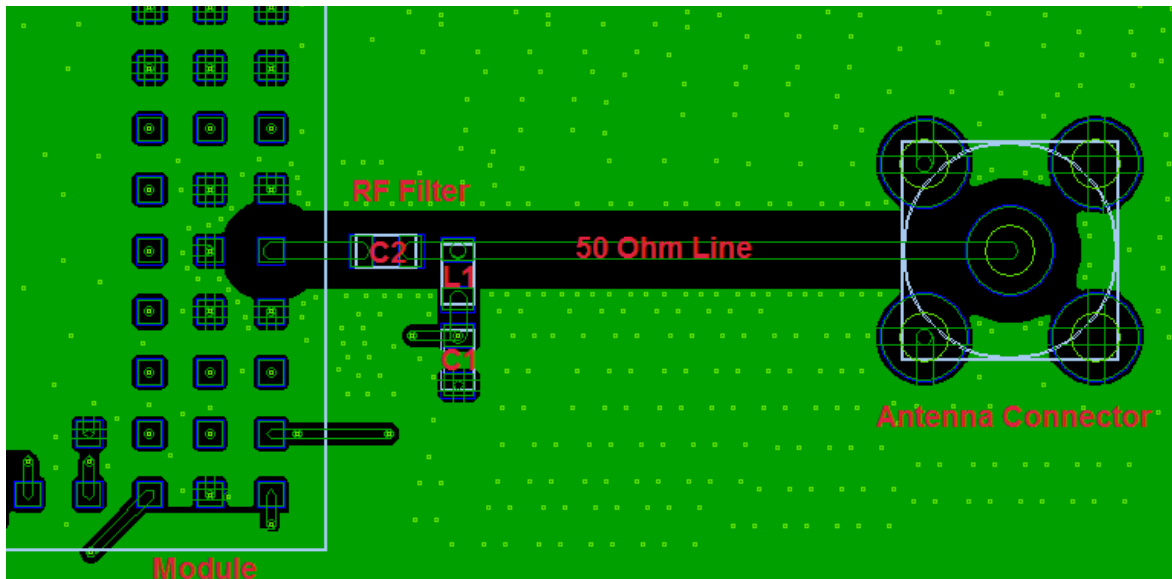


Figure 3-4 RF-filter layout example

4. DETECTION LIMITS

4.1. 10KΩ DC terminated antenna detection with AT#GSMAD

Referring to chapter 3.1, the detection algorithm checks if the “DC-resistance” of the antenna to ground path is compatible with a 10 K resistor within 5% tolerance. For Group 1 modules it is also capable to compensate an antenna ground offset V_d between -800mV and +800mV. Please note that for Group 2 products, the V_d compensation interval is [-800mV, +560mV]. If a $\pm 0.8V$ interval is required, then consider the solution presented at chapter 3.3.

If the “DC-resistance” of the antenna to ground path is compatible with a 10 K resistor within 5% tolerance, the antenna is correctly connected and detected. Otherwise, if DC-resistance is significantly less, the cable or antenna port is shorted; if it is much greater, the cable or antenna port is open (i.e. cut or unconnected wire). If the DC voltage read is stuck high, it means that the antenna terminal is in contact with a voltage source (for example a vehicle battery).

Please note that most automotive systems are specified to work with a ground offset of no more than $\pm 0.8V$. A ground offset that normally is above $\pm 0.8V$ may be an indication of a severe fault condition in the application wiring or connection with the antenna, e.g. high contact resistance, a broken or strained cable shield or a stray current due to a ground fault. Under these circumstances, the RF performance of the antenna may also be adversely affected.

4.2. DC grounded antenna with custom detection algorithm

As per chapter 3.2, the detection algorithm checks if the antenna shows a short circuit, meaning the antenna is present, or an open circuit, indicating the antenna is missing. Unfortunately, due to antenna zero DC impedance, the external voltage source contact with antenna is not detectable; neither a short circuit between antenna terminals cannot be detected, due to fact an antenna cable short cannot be distinguished from the antenna intrinsic DC short.

4.3. 10K Ω DC terminated antenna with custom detection algorithm

Solution at chapter 3.3 checks if the “DC-resistance” of the antenna to ground path is compatible with a 10 K resistor within 5% tolerance.

If this is the case, the antenna is correctly connected and detected. Otherwise, if DC-resistance is significantly less, the cable or antenna port is shorted; if it is much greater, the cable or antenna port is open (i.e. cut or unconnected wire). If the DC voltage read is stuck high, it means that the antenna terminal is in contact with a voltage source (for example a vehicle battery).

For both Group 1 and 2 modules, the proposed circuit and algorithm at chapter 5.3 is capable of Vd compensation in the [-800mV, +800mV] interval. Besides, the proposed algorithm is for reference only and it may be customized in order to be suitable to specific antenna and application configurations.

5. AT COMMAND INTERFACE AND ALGORITHMS

5.1. AT Commands

The module is provided by a set of commands that could be used with the Antenna Detection application.

The main command is AT#GSMAD that could be used with the application example described in chapter 3.1.

The other commands are AT#ADC and AT#GPIO that could be used with the application examples described in chapters 3.2 and 3.3.

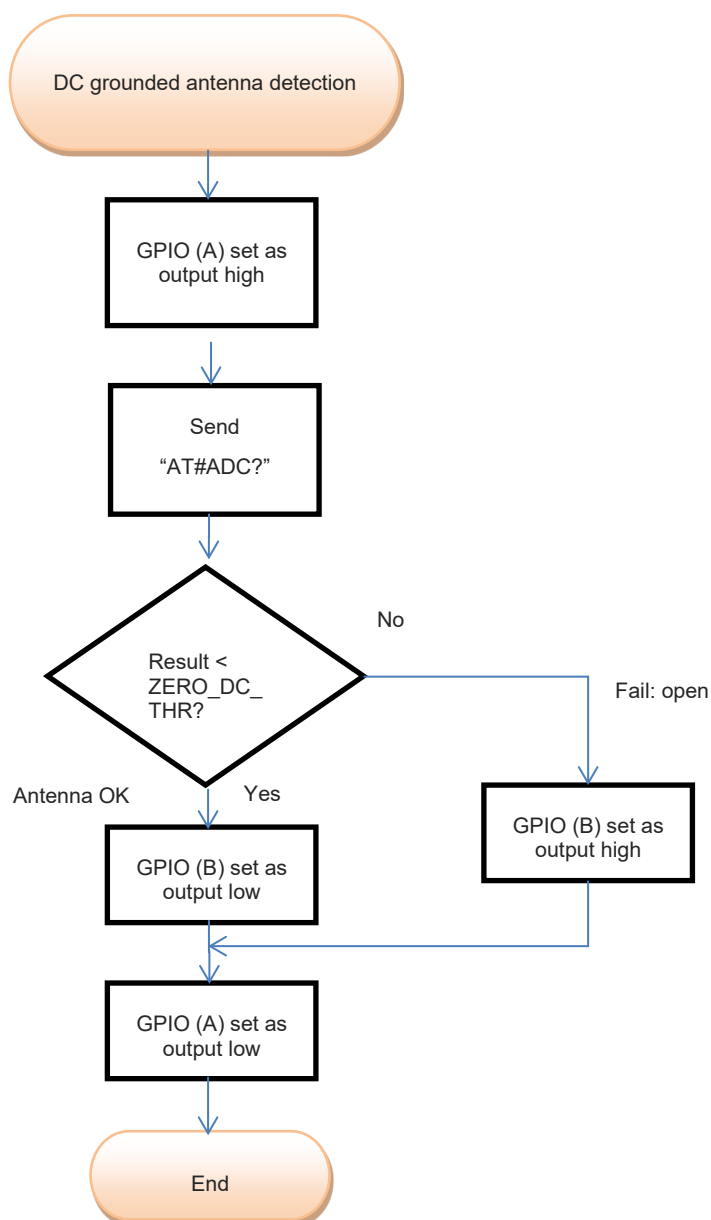
The following two chapters are describing the related algorithms.

All the details on the above commands are described in the AT Commands Reference Guides (see chapter 1.6 for the list of the available documents)

5.2. DC grounded antenna Algorithm

If the chapter 3.2 topology is used for a DC grounded antenna detection, its algorithm may be easily implemented by sending few AT commands to module, as per following flow chart.

ZERO_DC_THR is equal to 600mV for all products (both Group1 and 2).



5.3. 10KΩ DC terminated antenna Algorithm

If the chapter 3.3 solution is chosen, the following algorithm is suggested. For algorithms thresholds please refer to Table 5-1.

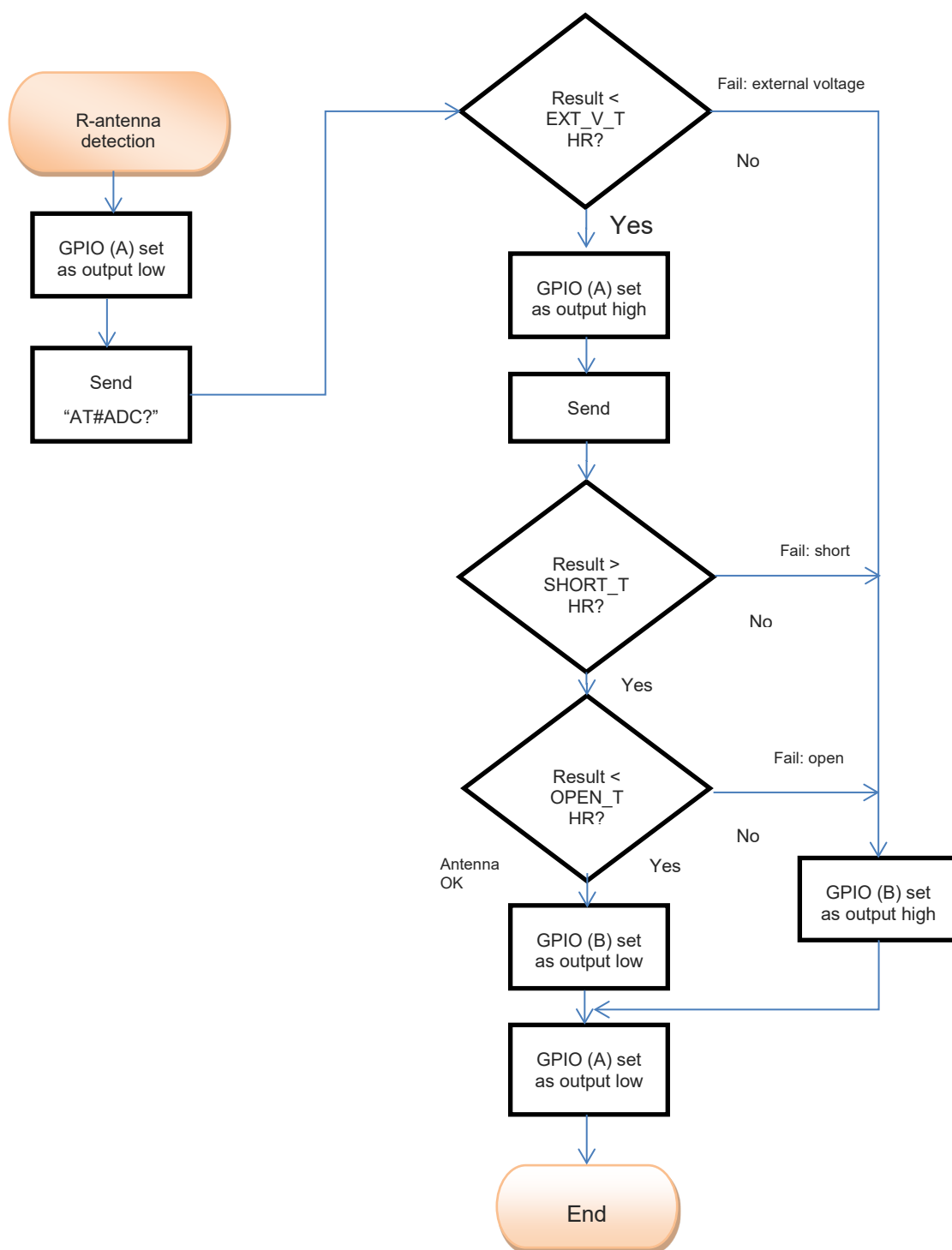


Table 5-1 defines the relevant detection algorithm thresholds, according to M2M module type:

THRESHOLD	GROUP 1 MODULES [mV]	GROUP 2 MODULES [mV]
EXT_V_THR	400	400
SHORT_THR	265	170
OPEN_THR	1370	880

Table 5-1 Algorithm thresholds

6. DOCUMENT HISTORY

Revision	Date	Changes
ISSUE#0	2007-11-12	Initial release
ISSUE#1	2008-10-14	Extended applicability to GE864-QUAD Automotive Revision of document layout
ISSUE#2	2009-01-16	Extended applicability to GE863-SIM
ISSUE#3	2009-05-29	Applied the new layout Added GE865 in the applicability table
ISSUE#4	2010-10-04	Added GL865-DUAL to the applicability table
ISSUE#5	2012-03-12	AT command change on AT #GSMAD
ISSUE#6	2013-07-02	Added HE910, UE910, GE910, GL865 V3; updated schematics and examples; AT commands linked to AT commands Reference Guide
ISSUE#7	2015-06-24	Added LE920, LE910, UE910-N3G, HE910-GL in the applicability table (removed HE910-GA)
ISSUE#8	2017-02-07	2017 Template applied



SUPPORT INQUIRIES

Link to www.telit.com and contact our technical support team for any questions related to technical issues.

www.telit.com



Telit Communications S.p.A.
Via Stazione di Prosecco, 5/B
I-34010 Sgonico (Trieste), Italy

Telit Wireless Solutions Inc.
3131 RDU Center Drive, Suite 135
Morrisville, NC 27560, USA

Telit Wireless Solutions Ltd.
10 Habarzel St.
Tel Aviv 69710, Israel

Telit IoT Platforms LLC
5300 Broken Sound Blvd, Suite 150
Boca Raton, FL 33487, USA

Telit Wireless Solutions Co., Ltd.
8th Fl., Shinyoung Securities Bld.
6, Gukjegeumyung-ro8-gil, Yeongdeungpo-gu
Seoul, 150-884, Korea

Telit Wireless Solutions
Tecnologia e Servicos Ltda
Avenida Paulista, 1776, Room 10.C
01310-921 São Paulo, Brazil

Telit reserves all rights to this document and the information contained herein. Products, names, logos and designs described herein may in whole or in part be subject to intellectual property rights. The information contained herein is provided "as is". No warranty of any kind, either express or implied, is made in relation to the accuracy, reliability, fitness for a particular purpose or content of this document. This document may be revised by Telit at any time. For most recent documents, please visit www.telit.com

Copyright © 2016, Telit

Mod. 0809 2017-01 Rev.9