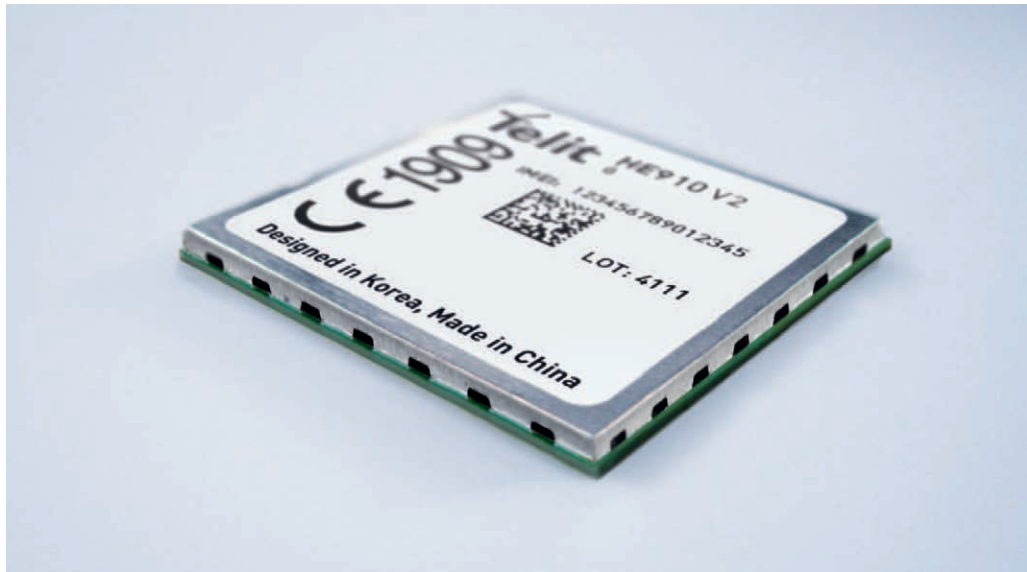


UMTS | HSPA+ 5.76/14.4

HE 910 V2 Family

Embedded



- Ultra Compact
- GPS/Glonass Receiver
- Telit Unified AT Command Set
- LGA Package
- Dual Band HSPA+
- Quad Band EDGE
- Quad Band GPRS
- RoHS Compliant
- SIM Access Profile
- USB 2.0 High Speed Compatible
- Extended RF Sensitivity
- Embedded TCP/IP Stack



TELIT INFINITA SERVICES

The HE910 V2 modules are small, lightweight, low power consumption devices which combine the access to digital communication services in 2G and 3G networks with Land-Grid Array (LGA) form factor.

The LGA package provides ultra low profile in the integrated solution while at the same time enhancing the performance of mechanical resistance to shock and reducing cost in high-volume applications, saving space and weight in portable devices.

The HE910 V2 variants are to be banded for European and North American markets and feature dual-band 3G and quad-band 2G support, including features like HSDPA 14.4 Mbps (Cat 10), HSUPA 5.7 Mbps (Cat 6), EGPRS Class 12.

The modules are compatible with Telit's xE910 family and as such can be dropped into existing or planned designs for xE910 modules without the need for additional reworking. This allows the xE910 family to enhance cross-technology capability with other popular global air-interface technologies.

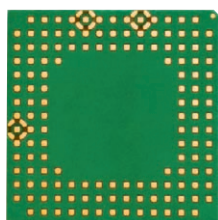
The HE910 V2 is fully digital audio capable and supports both GPS and GLONASS location technologies, while also providing full-duplex PCM input and output. This makes it well-suited for more advanced applications, such as healthcare, smart home and smart grid.

As a part of Telit's corporate policy of environmental protection, all Telit products comply with the RoHS (Restriction of Hazardous Substances) directive of the European Union (EU Directive 2002/95/EG).

| HE910 Variants | | | | | | | |
|---|--------------|--------------|-------------|-----------------------------|------|-------|-----|
| Variant name | Upload | Download | Frequencies | Features | | | |
| | HSUPA (Mbps) | HSDPA (Mbps) | | GSM GPRS EDGE Quad-band | Data | Voice | GPS |
| EMEA / APAC / Latin American markets | | | | | | | |
| HE910-EUR V2 | 5.76 | 14.4 | 900, 2100 | ■ | ■ | ■ | |
| HE910-EUD V2 | 5.76 | 14.4 | 900, 2100 | ■ | ■ | | |
| HE910-EUG V2 | 5.76 | 14.4 | 900, 2100 | ■ | ■ | ■ | ■ |
| North American market | | | | | | | |
| HE910-NAR V2 | 5.76 | 14.4 | 850, 1900 | ■ | ■ | ■ | |
| HE910-NAD V2 | 5.76 | 14.4 | 850, 1900 | ■ | ■ | | |
| HE910-NAG V2 | 5.76 | 14.4 | 850, 1900 | ■ | ■ | ■ | ■ |

HE 910 V2 Family

Embedded



actual size

Product features

- Supported frequencies
 - GSM/GPRS/EDGE: 850, 900, 1800, 1900
 - UMTS/HSPA+: 900, 2100 MHz for European market, 850, 1900 MHz for North American market
- HSPA+ data up to 14.4 Mbps downlink / 5.76 Mbps uplink
- Quad Band GPRS and EDGE class 12
- Small dimensions 28.2 x 28.2 x 2.2 mm
- Optional embedded GNSS receiver (GPS+Glonass)
- Extended temperature range
- SIM Access Profile
- 3GPP release 7 compliant
- Control via AT commands according to 3GPP TS27.005, 27.007 and customized Telit AT commands
- Serial port multiplexer 3GPP TS27.010
- SIM application Tool Kits 3GPP TS 51.014
- Built in UDP/TCP/FTP/SMTP stack

Interfaces

- 10 I/O ports maximum including multifunctional I/Os
- I2S for digital audio interface
- USB 2.0 HS
- 2 UART
- SPI
- I2C
- 1.8 V / 3 V SIM interface

Data

- HSPA category 6 in uplink and up to category 10 in downlink
 - Uplink up to 5.76 Mbps
 - Downlink up to 14.4 Mbps
- UMTS
 - Uplink/Downlink up to 384 kbps
- EDGE
 - Uplink up to 237 kbps
 - Downlink up to 237 kbps
- GPRS
- CSD

Electrical

- Output power
 - Class 4 (2 W, 33 dBm) @ GSM 850 / 900
 - Class 1 (1 W, 30 dBm) @ GSM 1800 / 1900
 - Class 3 (0.25 W, 24 dBm) @ UMTS
 - Class E2 (0.5 W, 27 dBm) @ EDGE 850 / 900
 - Class E2 (0.4 W, 26 dBm) @ EDGE 1800 / 1900
- Sensitivity
 - -111 dBm @ UMTS
 - -109 dBm @ GSM 850 / 900 MHz
 - -110 dBm @ DCS1800 / PCS1900 MHz
- Supply voltage
 - Nominal: 3.8 VDC
 - Range: 3.4 - 4.2 VDC

Additional features

- Digital voice and SMS
- IP stack with TCP and UDP protocol
- Standard and extended AT command set

Approvals

- RoHS Compliant
- CE, GCF (Europe)
- FCC, PTCRB, IC (North America)

Order No.

Please contact your Telit representative for order codes and all further information

Copyright © 2013, Telit
Subject to changes in technology,
design and availability

Distributed by:

Telit® wireless solutions

Telit Communications S.p.A.
Via Stazione di Prosecco, 5/B
I-34010 Sgonico (Trieste), Italy
Tel +39 040 4192 200
Fax +39 040 4192 289
E-Mail: EMEA@telit.com

Telit Wireless Solutions Inc.
3131 RDU Center Drive, Suite 135
Morrisville, NC 27560, USA
Tel +1 888 846 9773 or +1 919 439 7977
Fax +1 888 846 9774 or +1 919 840 0337
E-Mail: NORTHAMERICA@telit.com

Telit Wireless Solutions Inc.
Rua Cunha Gago, 700 - cj 81, Pinheiros
São Paulo - SP, 05421001, Brazil
Tel +55 11 3031 5051
Fax +55 11 3031 5051
E-Mail: LATINAMERICA@telit.com

Telit Wireless Solutions Co., Ltd.
12th Fl., Shinyoung Securities Bld.
34-12, Yeouido-dong, Yeongdeungpo-gu
Seoul, 150-884, Korea
Tel. +82 2 368 4600
Fax +82 2 368 4606
E-Mail: APAC@telit.com

www.telit.com

www.telit.com/ebook

www.telit.com/techforum

www.telit.com/facebook

www.telit.com/twitter

